

# XRCC1 (human) polyclonal antibody

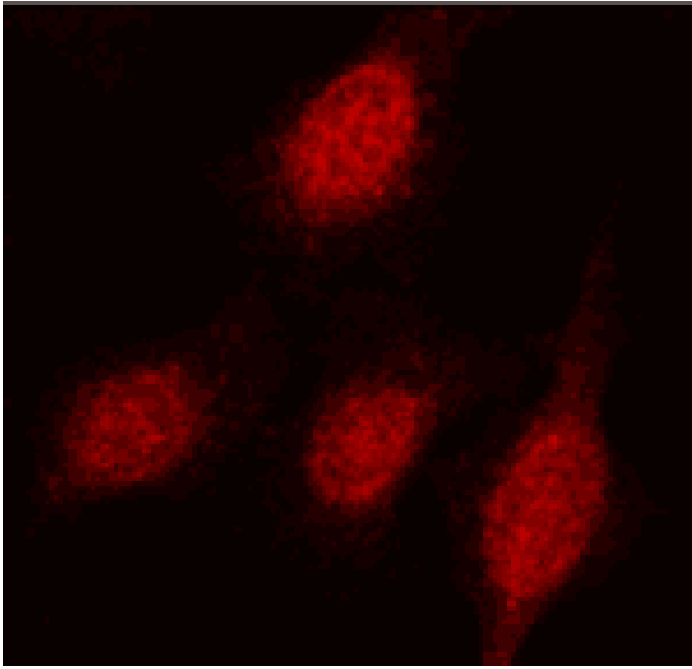
This antibody is covered by our [Worry-Free Guarantee](#).

Citations: 3

[View Online »](#)

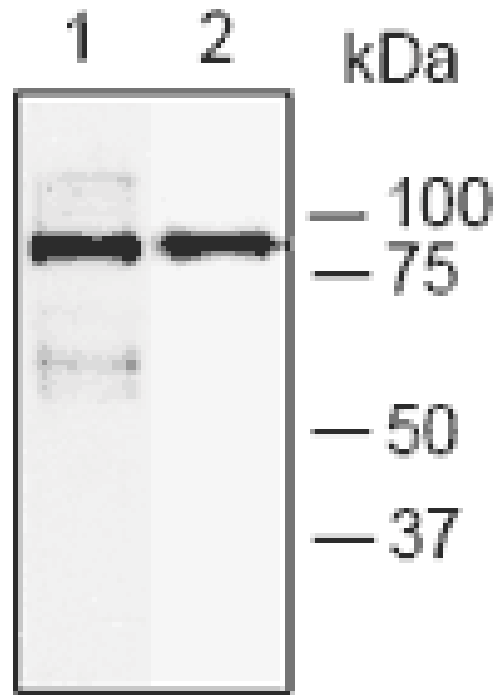
Manuals, SDS & CofA

[View Online »](#)



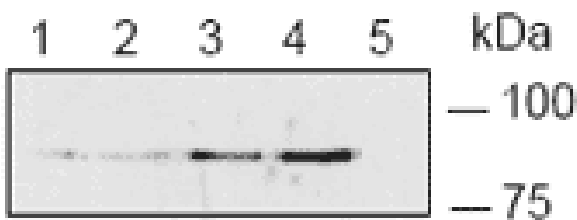
**Figure 3:** Immunocytochemistry of endogenous XRCC1 in HeLa cells using PAb to XRCC1 (human) (Prod. No. [ALX-210-539](#)) (1:1'000). XRCC1 (human) polyclonal antibody Immunocytochemistry, XRCC1 (human) polyclonal antibody Immunocytochemistry, yes ALX-210-539, 210-

539\_ip.gif, [http://static.enzolifesciences.com/fileadmin/files/images/210-539\\_ip.gif](http://static.enzolifesciences.com/fileadmin/files/images/210-539_ip.gif), **Figure 2:** Immunoprecipitation of endogenous XRCC1 from HeLa cells. Lane 1: PAb to XRCC1 (human) (Prod. No. [ALX-210-304](#)) (5µl). Lane 2: PAb to XRCC1 (human) (Prod. No. [ALX-210-304](#)) (10µl). Lane 3: PAb to XRCC1 (human) (Prod. No. [ALX-210-539](#)) (5µl). Lane 4: PAb to XRCC1 (human) (Prod. No. [ALX-210-539](#)) (10µl). Lane 5: Pre-immune serum.



**Figure 1:** Western blot analysis of endogenous and recombinant XRCC1 using PAb to XRCC1 (human) (Prod. No. [ALX-210-539](#)). Lane 1: HeLa cells. Lane 2: Recombinant human XRCC1 (10ng). XRCC1 (human) polyclonal antibody Western blot, XRCC1 (human) polyclonal antibody Western blot, yes ALX-210-540, 210-

540\_ip.gif, [http://static.enzolifesciences.com/fileadmin/files/images/210-540\\_ip.gif](http://static.enzolifesciences.com/fileadmin/files/images/210-540_ip.gif), **Figure 2:** Immunoprecipitation of endogenous PARP-1 from HeLa cells using PAb to PARP-1 (BRCT Domain) (Prod. No. [ALX-210-540](#)) (1:200). Lane 1: PAb to PARP-1 (BRCT Domain). Lane 2: Pre-immuneserum.



**Figure 2:** Immunoprecipitation of endogenous XRCC1 from HeLa cells. Lane 1: PAb to XRCC1 (human) (Prod. No. [ALX-210-304](#)) (5µl). Lane 2: PAb to XRCC1 (human) (Prod. No. [ALX-210-304](#)) (10µl). Lane 3: PAb to XRCC1 (human) (Prod. No. [ALX-210-539](#)) (5µl). Lane 4: PAb to XRCC1 (human) (Prod. No. [ALX-210-539](#)) (10µl). Lane 5: Pre-immune serum.

## Handling & Storage

Use/Stability	Stable for at least one year when stored at +4°C.
Long Term Storage	+4°C
Shipping	Blue Ice

## Regulatory Status

RUO - Research Use Only

## Product Details

Alternative Name	X-ray repair cross-complementing group 1
Application	ICC, IP, WB
Formulation	Liquid. Antiserum containing 0.1% sodium azide.
Host	Rabbit
Immunogen	Recombinant human XRCC1 (X-ray repair cross-complementing group 1) fused to a His-tag.
Recommendation Dilutions/Conditions	Immunocytochemistry (1:1,000)Immunoprecipitation (1:200)Western Blot (1:2,000)Suggested dilutions/conditions may not be available for all applications.Optimal conditions must be determined individually for each application.
Species Reactivity	Human
UniProt ID	P18887
Worry-free Guarantee	This antibody is covered by our <a href="#">Worry-Free Guarantee</a>

Last modified: May 29, 2024



ENZO LIFE SCIENCES,  
INC.  
Phone: 800.942.0430  
[info-  
usa@enzolifesciences.com](mailto:info-usa@enzolifesciences.com)

European Sales Office  
ENZO LIFE SCIENCES  
(ELS) AG  
Phone: +41 61 926 8989  
[info-  
eu@enzolifesciences.com](mailto:info-eu@enzolifesciences.com)

Belgium, The Netherlands  
& Luxembourg  
Phone: +32 3 466 0420  
[info-  
be@enzolifesciences.com](mailto:info-be@enzolifesciences.com)

France  
Phone: +33 472 440 655  
[info-  
fr@enzolifesciences.com](mailto:info-fr@enzolifesciences.com)

Germany  
Phone: +49 7621 5500 526  
[info-  
de@enzolifesciences.com](mailto:info-de@enzolifesciences.com)

UK & Ireland  
Phone (UK customers):  
0845 601 1488  
Phone: +44 1392 825900  
[info-  
uk@enzolifesciences.com](mailto:info-uk@enzolifesciences.com)