

# WESTERNVIEW<sup>®</sup>

## Detection Kit (Anti-Rabbit)

### Chromogenic Western Blot kit with increased signal and sensitivity

The WESTERNVIEW<sup>®</sup> Detection Kit (Anti-Rabbit) can be used to identify primary antibodies on a Western Blot using immunodetection. The kit contains a complete reagent set, with optimized ready-to-use or ready-to-dilute reagents.

Western Blotting is a common lab technique used to detect proteins in a sample of tissue homogenate or extract. Due to its flexibility, it can be used for a wide range of applications within molecular biology and biochemistry, including detection of post-translational modifications and verification of protein cloning. Using the size and color intensity of the protein band, a semi-quantitative estimation of protein can be derived.

### Ordering Information

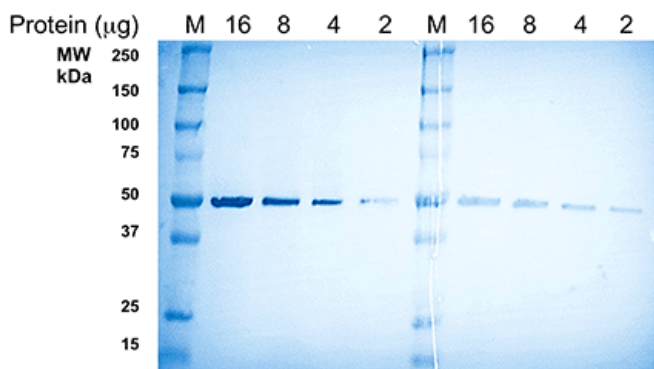
[Order Online »](#)

ENZ-KIT183-0001	1Kit
-----------------	------

### Manuals, SDS & CofA

[View Online »](#)

- More sensitive detection - able to detect lower concentrations of protein
- Easy to use - all reagents are ready-to-use or ready-to-dilute, saving precious time
- Amenable to multiplex analysis - determine source of protein bands with differentiated colors
- Easily adaptable - works with a wide range of mouse-derived proteins

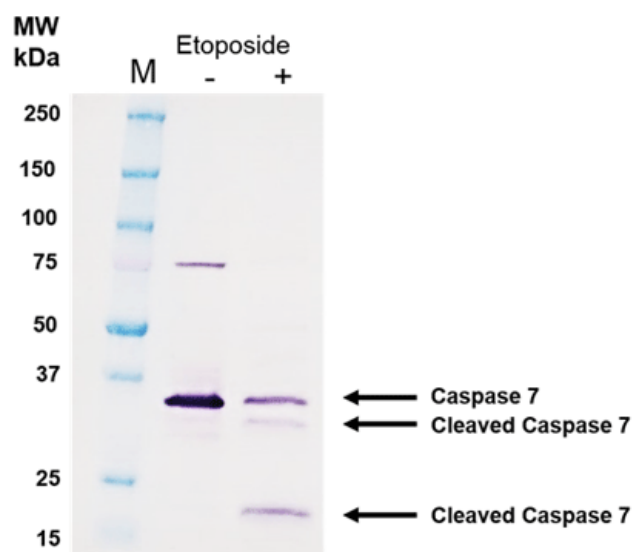


Chromogenic Western Blot Kit (ENZ-KIT182)

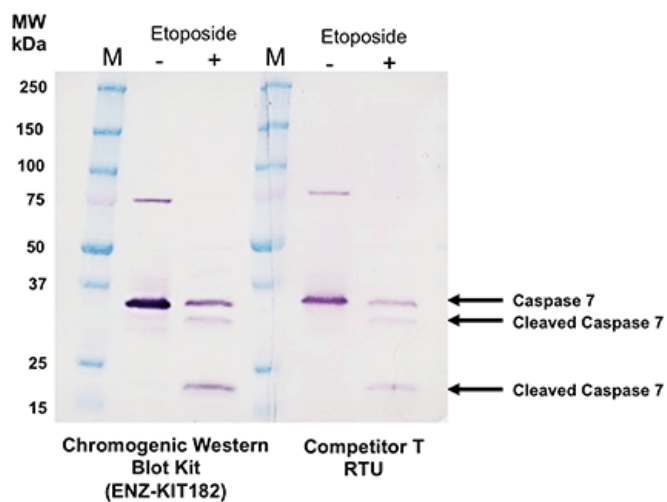
Competitor T RTU

Linear dilution of protein (μg) run in the WESTERNVIEW™ Detection Kit (Anti-Rabbit) and the competitor's kit.

Jurkat cells treated with or without 12.5 μM Etoposide for 18 hours  
12 μg total lysate loaded



Western Blot of Jurkat cells using WESTERNVIEW™ Detection Kit



Caspase-7, cleaved and uncleaved, run on the WESTERNVIEW™ Detection Kit and a competitor's kit.

## Handling & Storage

Short Term Storage +4°C

Long Term Storage +4°C

Shipping Blue Ice

**Regulatory Status** RUO - Research Use Only

## Product Details

Application Colorimetric detection, WB

Assay Time 2 hours

Contents

1. Antibody Diluent, 4 x 90 mL  
Diluent solution for dilution of primary and secondary antibodies.
2. NBT/BCIP, Ready-to-Use, 100 mL  
Ready-made solution for chromogenic blotting.
3. Wash Buffer (10X), 2 x 100 mL  
10X Wash Buffer for washing membrane.
4. Secondary Antibody (AP Anti-Rabbit), 4.5 mL  
Anti-Rabbit secondary antibody for detection of rabbit-based primary antibodies in Western Blot.

Species Reactivity Rabbit

Last modified: May 29, 2024



ENZO LIFE SCIENCES,  
INC.  
Phone: 800.942.0430  
[info-  
usa@enzolifesciences.com](mailto:info-usa@enzolifesciences.com)

European Sales Office  
ENZO LIFE SCIENCES  
(ELS) AG  
Phone: +41 61 926 8989  
[info-  
eu@enzolifesciences.com](mailto:info-eu@enzolifesciences.com)

Belgium, The Netherlands  
& Luxembourg  
Phone: +32 3 466 0420  
[info-  
be@enzolifesciences.com](mailto:info-be@enzolifesciences.com)

France  
Phone: +33 472 440 655  
[info-  
fr@enzolifesciences.com](mailto:info-fr@enzolifesciences.com)

Germany  
Phone: +49 7621 5500 526  
[info-  
de@enzolifesciences.com](mailto:info-de@enzolifesciences.com)

UK & Ireland  
Phone (UK customers):  
0845 601 1488  
Phone: +44 1392 825900  
[info-  
uk@enzolifesciences.com](mailto:info-uk@enzolifesciences.com)