

# VU0155069

## PLD inhibitor

Potent and specific inhibitor of phospholipase D1 (PLD1) in cellular (PLD1  $IC_{50}$  = 11nM Calu-1 cells; PLD2  $IC_{50}$  = 1800nM HEK293-gfpPLD2 cells) and *in vitro* (hPLD1  $IC_{50}$  = 46nM; hPLD2  $IC_{50}$  = 933nM) assays. Significantly decreases invasive migration in breast cancer cell lines (MDA-231, 4T1 and PMT).

Citations: 1

[View Online »](#)

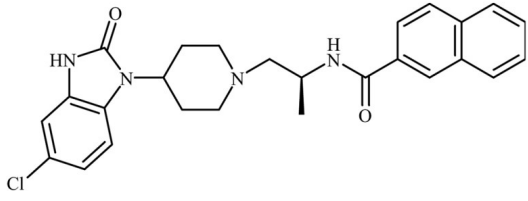
## Ordering Information

[Order Online »](#)

BML-ST370-0005	5mg
----------------	-----

## Manuals, SDS & CofA

[View Online »](#)



## Handling & Storage

<b>Use/Stability</b>	As indicated on product label or CoA when stored as recommended. Store solutions at -20°C for up to 3 months.
<b>Long Term Storage</b>	-20°C
<b>Shipping</b>	Blue Ice

**Regulatory Status** RUO - Research Use Only

## Product Details

<b>Alternative Name</b>	N-[(2S)-1-[4-(5-Chloro-2-oxo-3H-benzimidazol-1-yl)-piperidin-1-yl]-propan-2-yl]naphthalene-2-carboxamide
<b>Appearance</b>	Pale-yellow solid.
<b>CAS</b>	1130067-06-9
<b>Couple Target</b>	PLD
<b>Couple Type</b>	Inhibitor
<b>Formula</b>	$C_{26}H_{27}ClN_4O_2$
<b>MW</b>	463.0
<b>Purity</b>	≥98% (TLC)
<b>Solubility</b>	Soluble in DMSO (>25mg/ml) or 100% ethanol (>25mg/ml).

**Last modified: May 29, 2024**



ENZO LIFE SCIENCES,  
INC.  
Phone: 800.942.0430  
[info-usa@enzolifesciences.com](mailto:info-usa@enzolifesciences.com)

European Sales Office  
ENZO LIFE SCIENCES  
(ELS) AG  
Phone: +41 61 926 8989  
[info-eu@enzolifesciences.com](mailto:info-eu@enzolifesciences.com)

Belgium, The Netherlands  
& Luxembourg  
Phone: +32 3 466 0420  
[info-be@enzolifesciences.com](mailto:info-be@enzolifesciences.com)

France  
Phone: +33 472 440 655  
[info-fr@enzolifesciences.com](mailto:info-fr@enzolifesciences.com)

Germany  
Phone: +49 7621 5500 526  
[info-de@enzolifesciences.com](mailto:info-de@enzolifesciences.com)

UK & Ireland  
Phone (UK customers):  
0845 601 1488  
Phone: +44 1392 825900  
[info-uk@enzolifesciences.com](mailto:info-uk@enzolifesciences.com)