

# TROP2 recombinant monoclonal antibody (001)

This antibody is covered by our [Worry-Free Guarantee](#).

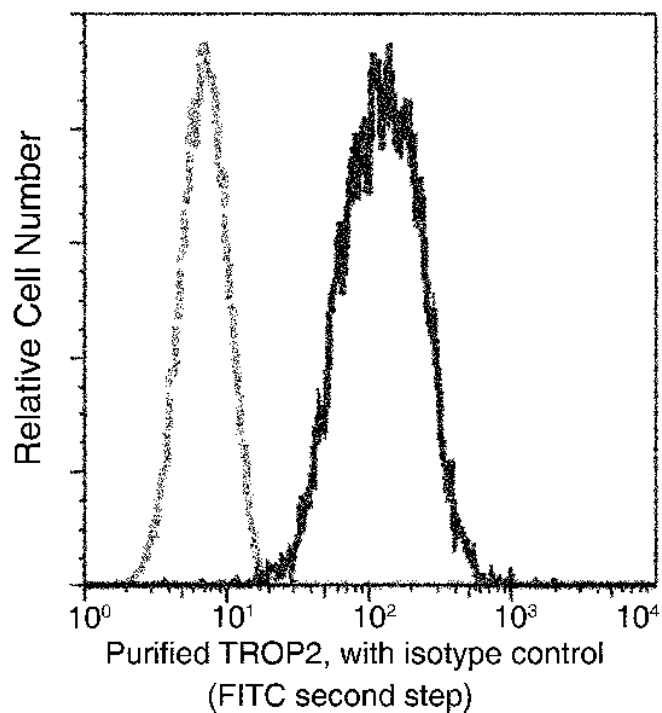
## Ordering Information

[Order Online »](#)

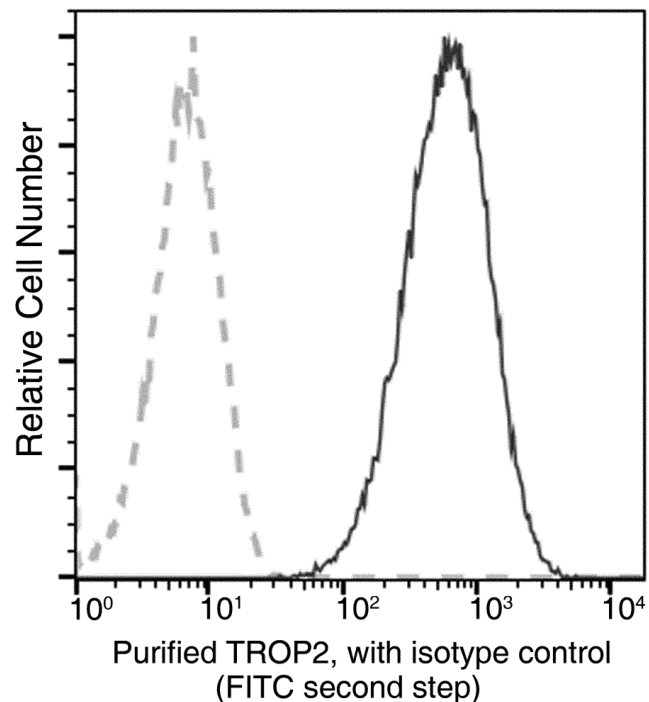
ENZ-ABS951-0100	100µl
-----------------	-------

## Manuals, SDS & CofA

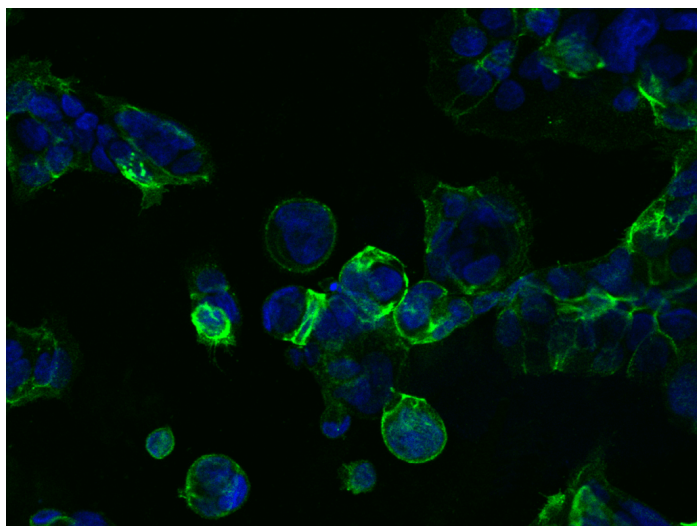
[View Online »](#)



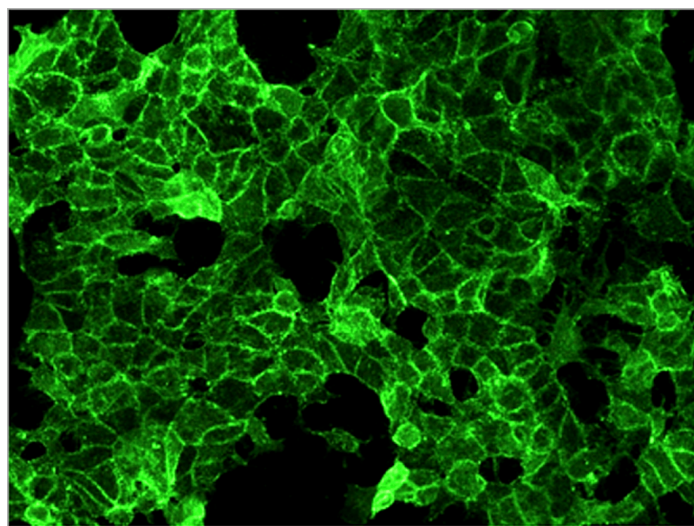
Flow cytometric analysis of human TROP2 expression on MCF-7 cells. Cells were stained with purified anti-Human TROP2, then a FITC-conjugated second step antibody. The histogram were derived from gated events with the forward and side light-scatter characteristics of intact cells.



Flow cytometric analysis of human TROP2 expression on NCI-N87 cells. Cells were stained with purified anti-Human TROP2, then a FITC-conjugated second step antibody. The histogram were derived from gated events with the forward and side light-scatter characteristics of intact cells.



Immunofluorescence staining of TROP-2 in NCI-N87 cells. Cells were fixed with 4% PFA, blocked with 10% serum, and incubated with rabbit anti-Human TROP-2 monoclonal antibody (dilution ratio 1:60) at 4 °C overnight. Then cells were stained with the Alexa Fluor®488-conjugated Goat Anti-rabbit IgG secondary antibody (green) and counterstained with DAPI (blue). Positive staining was localized to Cell membrane.



Immunofluorescence staining of human TROP2 in MCF-7 cells with rabbit monoclonal antibody (1:200). The image showing membrane staining of MCF-7 cells.

## Handling & Storage

Handling	Protected from light. Avoid freeze-thaw cycles.
Long Term Storage	-20°C
Shipping	Blue Ice

## Regulatory Status

RUO - Research Use Only

## Product Details

Alternative Name	Tumor associated calcium signal transducer 2, GA733-1, M1S1, TACSTD2
Application	ELISA, Flow Cytometry, ICC, IF
Clone	001
Formulation	Liquid. 0.2 µm filtered solution in PBS. Preservative free.
Host	Rabbit
Immunogen	Recombinant human TROP2 / TACSTD2 protein.
Isotype	IgG
Purity Detail	Protein A purified.
Recommendation Dilutions/Conditions	ELISA (1:5'000-1:10'000)Immunocytochemistry (1:20-1:100)Immunofluorescence (1:20-1:100)Flow Cytometry (1:25-1:100)Suggested dilutions/conditions may not be available for all applications.Optimal conditions must be determined individually for each application.
Species Reactivity	Human
Worry-free Guarantee	This antibody is covered by our <a href="#">Worry-Free Guarantee</a>



ENZO LIFE SCIENCES,  
INC.  
Phone: 800 612 0430  
[info-usa@enzolifesciences.com](mailto:info-usa@enzolifesciences.com)

European Sales Office  
ENZO LIFE SCIENCES  
(EU & US) AG  
Phone: +41 61 926 8989  
[info-eu@enzolifesciences.com](mailto:info-eu@enzolifesciences.com)

Belgium, The Netherlands  
& Luxembourg  
Phone: +32 3 466 0420  
[info-fr@enzolifesciences.com](mailto:info-fr@enzolifesciences.com)

France  
Phone: +33 472 440 655  
[info-fr@enzolifesciences.com](mailto:info-fr@enzolifesciences.com)

Germany  
Phone: +49 7621 5500 526  
[info-de@enzolifesciences.com](mailto:info-de@enzolifesciences.com)

UK & Ireland  
Phone (UK customers):  
0845 601 1488  
Phone: +44 1392 825900  
[info-uk@enzolifesciences.com](mailto:info-uk@enzolifesciences.com)