

TROP2 (human) monoclonal antibody (01)

Trop-2 (tumor-associated calcium signal transducer 2) is a 46-48kDa cell surface glycoprotein that acts as a calcium signal transducer. The molecule is expressed at high levels in human trophoblasts and overexpressed on a large variety of human carcinomas (including breast, colon, lung and prostate cancers). As an example, Trop-2 is among the most highly overexpressed genes in primary ovarian serous papillary tumors compared to normal ovarian epithelium and in colon tumors compared with normal mucosa. Trop-2 is homologous to Trop-1 and both are homologous to serum IGF-II-binding proteins. The specific role of Trop-2 in normal and tumor cells is not fully defined, but accumulating evidence suggests a regulatory role in the growth of carcinoma cells. Furthermore there is data supporting the hypothesis that Trop-2 is involved in tumor invasion and metastasis. Indeed, TROP2 is one of the cancer-related genes that correlates with biological aggressiveness and poor prognosis of colorectal cancer.

This antibody is covered by our [Worry-Free Guarantee](#).

Citations: 6

[View Online »](#)

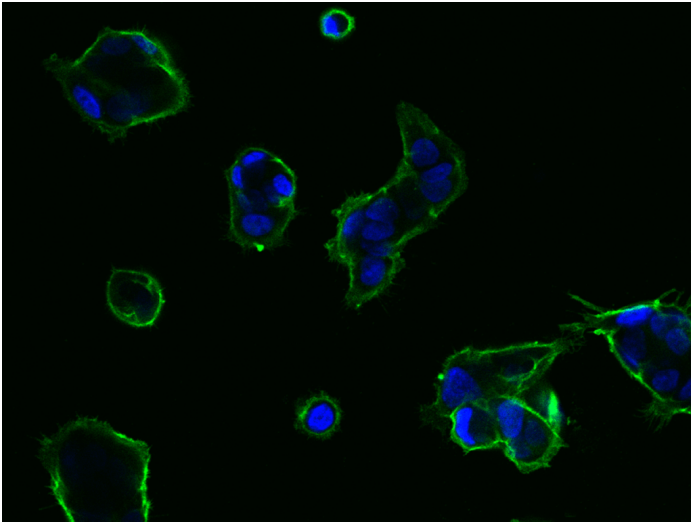
Ordering Information

[Order Online »](#)

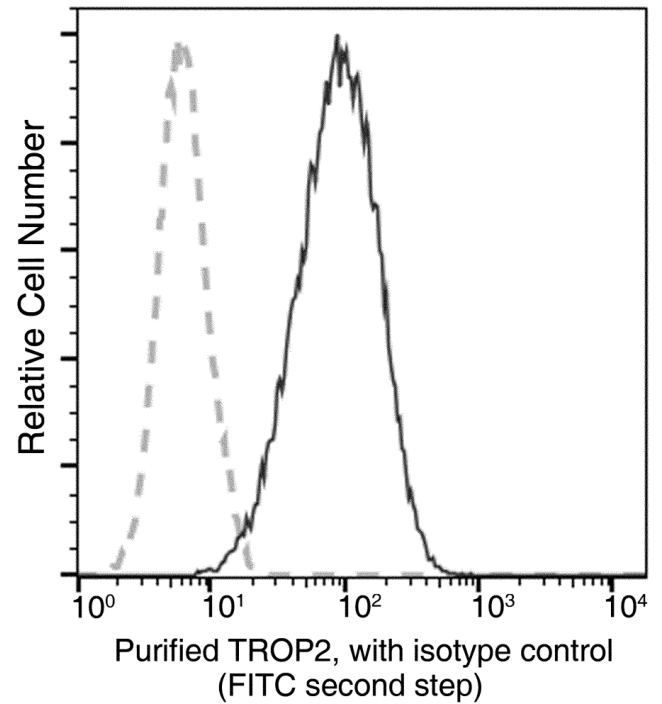
ENZ-ABS380-0100	100µl
-----------------	-------

Manuals, SDS & CofA

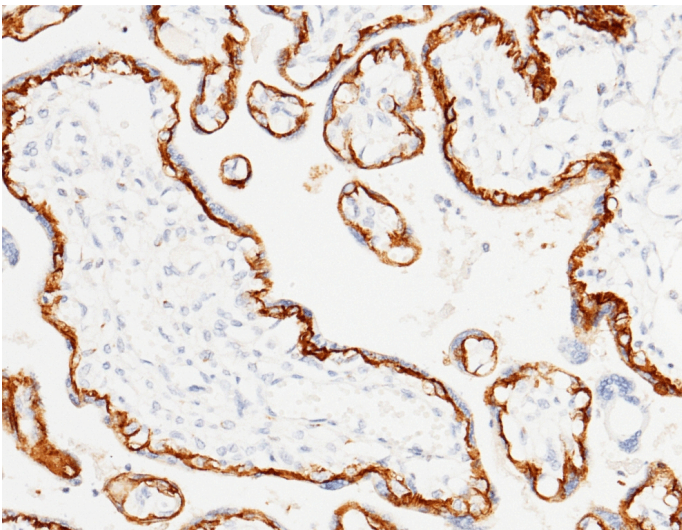
[View Online »](#)



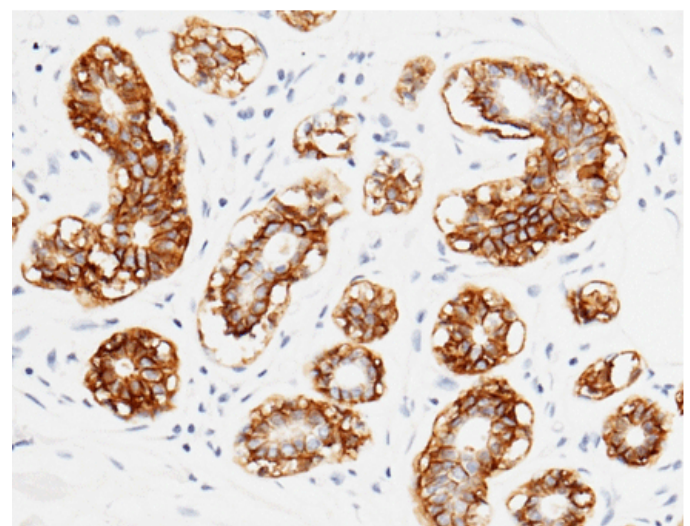
Immunofluorescence staining of TROP-2 in NCI-N87 cells. Cells were fixed with 4% PFA, blocked with 10% serum, and incubated with TROP-2 monoclonal antibody (dilution ratio 1:60) at 4 °C overnight. Then cells were stained with the Alexa Fluor®488-conjugated Goat Anti-mouse IgG secondary antibody (green) and counterstained with DAPI (blue). Positive staining was localized to Cell membrane.



Flow cytometric analysis of human TROP2 expression on NCI-N87 cells. Cells were stained with purified anti-Human TROP2, then a FITC-conjugated secondary antibody. The histogram were derived from gated events with the forward and side light-scatter characteristics of intact cells.



Immunochemical staining of TROP2 in human placenta with mouse monoclonal antibody (1:60, formalin-fixed paraffin embedded sections). Positive staining was localized to membrane of cytotrophoblast.



Immunochemical staining of TROP2 in human mammary gland with mouse monoclonal antibody (1:200, formalin-fixed paraffin embedded sections). Positive staining was localized to membrane of alveolus epithelium.

Handling & Storage

Handling	Sodium azide is recommended to avoid contamination (final concentration 0.05%-0.1%) It is toxic to cells and should be disposed of properly. Avoid freeze-thaw cycles.
Long Term Storage	-20°C
Shipping	Blue Ice

Regulatory Status

RUO - Research Use Only

Product Details

Alternative Name	Tumor associated calcium signal transducer 2, GA733-1, M1S1, TACSTD2
Application	ELISA, Flow Cytometry, IHC (PS)
Clone	01
Crossreactivity	Does not cross-react with mouse or rat TROP2.
Formulation	Liquid. 0.2 µM filtered solution in PBS.
Host	Mouse
Immunogen	Recombinant human TROP2 extracellular domain.
Isotype	IgG1
Purity Detail	Protein A affinity purified.
Species Reactivity	Human
UniProt ID	P09758
Worry-free Guarantee	This antibody is covered by our Worry-Free Guarantee .



ENZO LIFE SCIENCES,
INC.
Phone: 800.942.0430
[info-
usa@enzolifesciences.com](mailto:info-usa@enzolifesciences.com)

European Sales Office
ENZO LIFE SCIENCES
(ELS) AG
Phone: +41 61 926 8989
[info-
eu@enzolifesciences.com](mailto:info-eu@enzolifesciences.com)

Belgium, The Netherlands
& Luxembourg
Phone: +32 3 466 0420
[info-
fr@enzolifesciences.com](mailto:info-fr@enzolifesciences.com)

France
Phone: +33 472 440 655
[info-
fr@enzolifesciences.com](mailto:info-fr@enzolifesciences.com)

Germany
Phone: +49 7621 5500 526
[info-
de@enzolifesciences.com](mailto:info-de@enzolifesciences.com)

UK & Ireland
Phone (UK customers):
0845 601 1488
Phone: +44 1392 825900
[info-
uk@enzolifesciences.com](mailto:info-uk@enzolifesciences.com)