

# TRAIL (soluble) (human), (recombinant) (His- tag)

TRAIL, also called Apo2L, is a member of the tumor necrosis factor family (TNF). In contrast to other family members such as TNF $\alpha$ /TNFR1 and FasL/Fas, TRAIL and its receptors DR4 and DR5 are widely expressed in many human tissues. TRAIL activates rapid apoptosis in many transformed cell lines but not in normal tissues, even though TRAIL and its receptors DR4 and DR5 are expressed on both cell types. A glycosphospholipid-anchored cell surface protein designated decoy receptor 1 (DcR1 or TRID) acts as a decoy to inhibit TRAIL signaling. Thus, TRAIL and its signaling pathways may have direct applications in selective tumor cell death and cancer research.

Citations: 48

[View Online »](#)

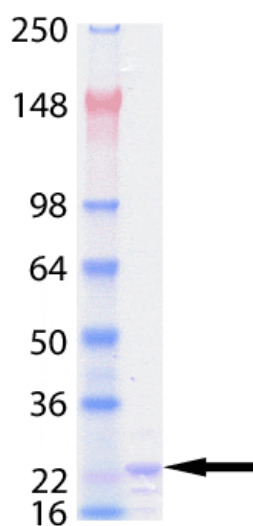
## Ordering Information

[Order Online »](#)

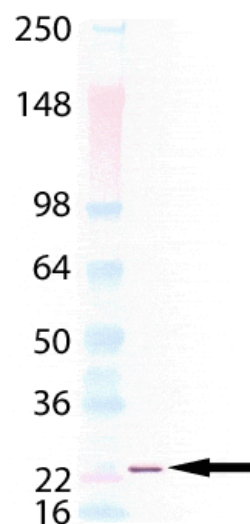
BML-SE721-0100	100 $\mu$ g
----------------	-------------

## Manuals, SDS & CofA

[View Online »](#)



SDS-PAGE analysis: Lane 1: MW marker, Lane 2: 1µg TRAIL (soluble) (human), (recombinant) (His-tag) (Prod. No. BML-SE721).



Western Blot Analysis: Lane 1: MW marker, Lane 2: 50 ng of TRAIL (soluble) (human), (recombinant) (His-tag) probed with Anti-6X His tag® antibody.

## Handling & Storage

<b>Use/Stability</b>	When stored at -80°C, this protein is stable at the concentration supplied, in its current storage buffer. Procedures such as dilution of the protein, followed by refreezing, could lead to loss of activity.
<b>Handling</b>	After initial defrost, aliquot product into individual tubes and refreeze at -70°C. Avoid freeze/thaw cycles.
<b>Long Term Storage</b>	-80°C
<b>Shipping</b>	Dry Ice

**Regulatory Status** RUO - Research Use Only

## Product Details

<b>Alternative Name</b>	Apo-2L, TNFSF 10, CD253
<b>Biological Activity</b>	Induces apoptosis in U937 cells at 1µg/ml, within 5 hours. At 0.5-2.0µg/ml, induces apoptosis in various thyroid carcinoma lines within 18 hours. User must determine optimal concentrations and time course for induction. Please note that this protein does not require a cross-linking enhancer to exhibit this potent activity.
<b>Endotoxin Content</b>	<0.1 EU/µg TRAIL, determined using chromogenic Limulus amebocyte lysate (LAL) test.
<b>Formulation</b>	Liquid. In PBS, containing 10% glycerol and 0.1mM DTT.
<b>MW</b>	~23kDa
<b>Purity</b>	≥95% (SDS-PAGE)
<b>Purity Detail</b>	Purified by multi-step chromatography.
<b>Source</b>	Produced in <i>E. coli</i> . Human TRAIL (aa 114-281) is fused to a His-tag.
<b>Specificity</b>	Binds to human and mouse TRAIL receptors and human osteoprotegerin (OPG).
<b>UniProt ID</b>	P50591



ENZO LIFE SCIENCES,  
INC.  
Phone: 800.942.0430  
[info-  
usa@enzolifesciences.com](mailto:info-usa@enzolifesciences.com)

European Sales Office  
ENZO LIFE SCIENCES  
(ELS) AG  
Phone: +41 61 926 8989  
[info-  
eu@enzolifesciences.com](mailto:info-eu@enzolifesciences.com)

Belgium, The Netherlands  
& Luxembourg  
Phone: +32 3 466 0420  
[info-  
be@enzolifesciences.com](mailto:info-be@enzolifesciences.com)

France  
Phone: +33 472 440 655  
[info-  
fr@enzolifesciences.com](mailto:info-fr@enzolifesciences.com)

Germany  
Phone: +49 7621 5500 526  
[info-  
de@enzolifesciences.com](mailto:info-de@enzolifesciences.com)

UK & Ireland  
Phone (UK customers):  
0845 601 1488  
Phone: +44 1392 825900  
[info-  
uk@enzolifesciences.com](mailto:info-uk@enzolifesciences.com)