

# Tollip monoclonal antibody (Kimmy-2)

This antibody is covered by our [Worry-Free Guarantee](#).

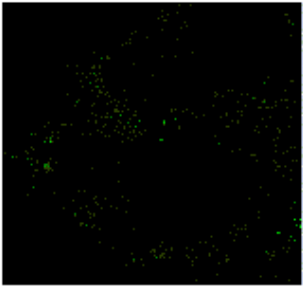
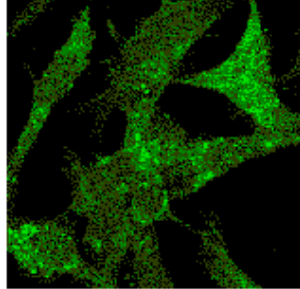
## Ordering Information

[Order Online »](#)

|                  |       |
|------------------|-------|
| ALX-804-154-C100 | 100µg |
|------------------|-------|

## Manuals, SDS & CofA

[View Online »](#)

**A****B**

**Figure:** Immunocytochemistry showing the detection of Tollip in Tollip -/- (A) or overexpressed Tollip in -/- (B) murine embryonic fibroblasts (MEF) cells with the MAb

to Tollip (Kimmy-2) (Prod. No. [ALX-804-154](#)).**Method:** Following fixation with paraformaldehyde 3.7% and permeabilization with 0.2% saponin, MEF cells were

incubated with the MAb to Tollip (Kimmy-2) at a 1:100 dilution. An anti-mouse IgG antibody conjugated with Alexa Fluor 488 was used for detection.”””,Tollip monoclonal antibody (Kimmy-2)

Immunocytochemistry,Tollip monoclonal antibody (Kimmy-2) Immunocytochemistry,yes

ALX-804-157,804-

157.gif,[http://static.enzolifesciences.com/fileadmin/files/image/804-](http://static.enzolifesciences.com/fileadmin/files/image/804-157.gif)

157.gif,**Method:** HEK 293T cells were mock transfected (thin line) or transfected with an expression plasmid enabling surface expression of the extracellular domain of mouse BAFF (thick line). Cells ( $5 \times 10^5$ ) were incubated on ice for 30 min in 50 $\mu$ l FACS buffer (PBS

## Handling & Storage

|                    |  |
|--------------------|--|
| Use/Stability      | Stable for at least 1 year after receipt when stored as recommended. |
| Handling           | Avoid freeze/thaw cycles.  |
| Short Term Storage | +4°C   |
| Long Term Storage  | -20°C  |
| Shipping           | Blue Ice   |

## Regulatory Status

RUO - Research Use Only

## Product Details

|  |   |
|--|---|
| Application                            | ICC, IP, WB   |
| Clone                                  | Kimmy-2   |
| Crossreactivity                        | Weakly cross-reacts with human tollip.  |
| Formulation                            | Liquid. In PBS containing 0.02% sodium azide.   |
| Host                                   | Mouse   |
| Immunogen                              | Recombinant mouse Tollip (aa 1-274).  |
| Isotype                                | IgG1  |
| Recommendation<br>Dilutions/Conditions | Immunocytochemistry (1:100)Western Blot (1µg/ml)Suggested dilutions/conditions may not be available for all applications.Optimal conditions must be determined individually for each application. |
| Source                                 | Purified from concentrated hybridoma tissue supernatant.  |
| Species Reactivity                     | Mouse   |
| UniProt ID                             | Q9QZ06  |



ENZO LIFE SCIENCES,  
Phone: 800.942.0430  
[info-usa@enzolifesciences.com](mailto:info-usa@enzolifesciences.com)

European Sales Office  
(ELS) AG  
Phone: +41 61 926 8989  
[info-eu@enzolifesciences.com](mailto:info-eu@enzolifesciences.com)

Belgium, The Netherlands  
Phone: +32 3 466 0420  
[info-be@enzolifesciences.com](mailto:info-be@enzolifesciences.com)

France  
Phone: +33 1 402 44 555  
[info-fr@enzolifesciences.com](mailto:info-fr@enzolifesciences.com)

Germany  
Phone: +49 7621 5500 526  
[info-de@enzolifesciences.com](mailto:info-de@enzolifesciences.com)

UK & Ireland  
Phone (UK customers):  
0845 601 1488  
Phone: +44 1392 825900  
[info-uk@enzolifesciences.com](mailto:info-uk@enzolifesciences.com)

This antibody is covered by our **Worry Free Guarantee**