

Toll-like receptor 8 monoclonal antibody (44C143)

The Toll-like receptor (TLR) family in mammal comprises a family of transmembrane proteins characterized by multiple copies of leucine rich repeats in the extracellular domain and IL-1 receptor motif in the cytoplasmic domain. Like its counterparts in *Drosophila*, TLRs signal through adaptor molecules. The TRL family is a phylogenetically conserved mediator of innate immunity that is essential for microbial recognition. Ten human homologs of TLRs (TLR1-10) have been described. TLR8 gene contains three exons, two of which have coding function. TLR8 cDNA codes for a protein of approximate molecular weight of 120kDa.

This antibody is covered by our [Worry-Free Guarantee](#).

Citations: 3

[View Online »](#)

Manuals, SDS & CofA

[View Online »](#)

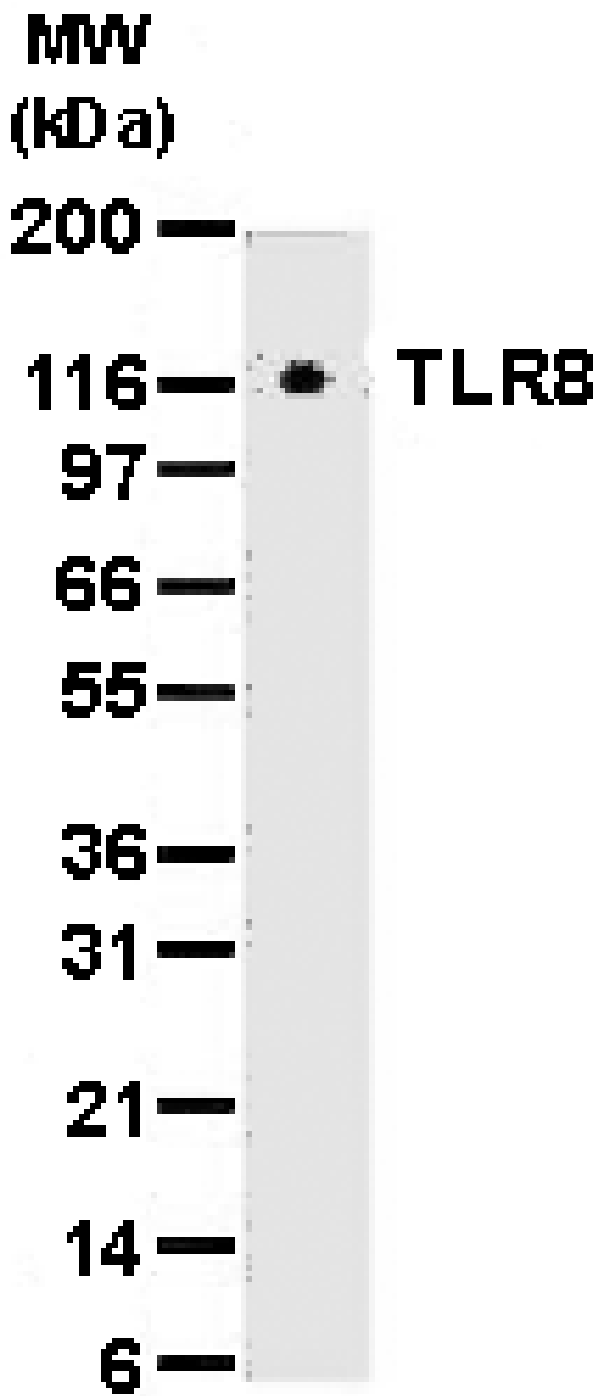


Figure: Western blot analysis of TLR8 in cell lysates from 293 transfected with human TLR8 using [ALX-804-376](#) at a dilution of 2µg/ml. "Toll-like receptor 8 monoclonal antibody (44C143) Western blot, Toll-like receptor 8 monoclonal antibody (44C143) Western blot, yes

ALX-804-376, 804-

376_4.gif, [http://static.enzolifesciences.com/fileadmin/files/image/804-](http://static.enzolifesciences.com/fileadmin/files/image/804-376_4.gif)

376_4.gif, **Figure:** Immunohistochemical analysis of TLR8 in paraffin-embedded formalin-fixed human brain tissue using an isotype control (top) or MAb to Toll-like Receptor 8 (44C143) (Prod. No. [ALX-804-376](#)). "Toll-like receptor 8 monoclonal antibody (44C143) Western blot, Toll-like receptor 8 monoclonal antibody (44C143) Western blot, yes

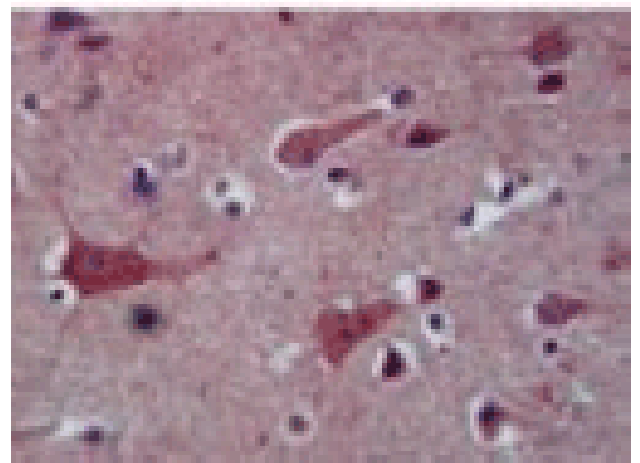
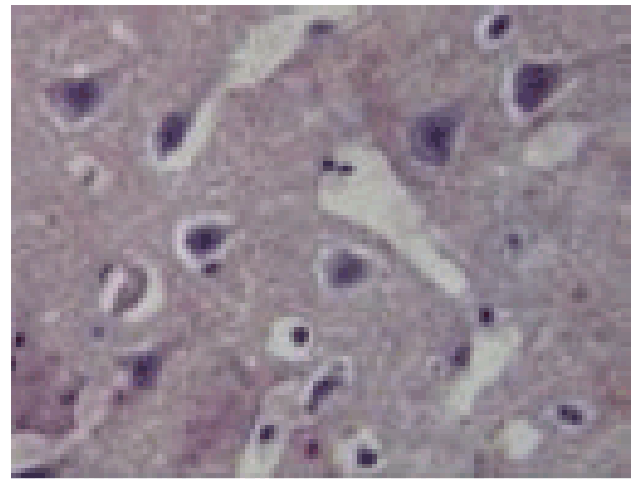


Figure: Immunohistochemical analysis of TLR8 in paraffin-embedded formalin-fixed human brain tissue using an isotype control (top) or MAb to Toll-like Receptor 8 (44C143) (Prod. No. ALX-804-376).

Handling & Storage

Handling	Avoid freeze/thaw cycles.
Short Term Storage	+4°C
Long Term Storage	-20°C
Shipping	Blue Ice

Regulatory Status RUO - Research Use Only

Product Details

Alternative Name	TLR8, CD288
Application	Flow Cytometry, IHC (PS), WB
Application Notes	Detects a band of ~120kDa by Western blot. Flow Cytometry: Suitable for cell surface and intracellular FC.
Clone	44C143
Formulation	Liquid. In PBS containing 0.05% BSA and 0.05% sodium azide.
Host	Mouse
Immunogen	Synthetic peptide corresponding to aa 750-850 of the cytoplasmic portion of human TLR8 (Toll-like receptor 8).
Isotype	IgG1
Purity Detail	Protein G-affinity purified.
Recommendation Dilutions/Conditions	Flow Cytometry (intracellular, 0.5-5µg per 10 ⁶ cells; cell surface: see Xu et al. (2006) for details)Immunohistochemistry (paraffin sections: 5µg/ml)Western Blot (1-3µg/ml)Suggested dilutions/conditions may not be available for all applications.Optimal conditions must be determined individually for each application.

Species Reactivity

Human, Mouse

Technical Info / Product Notes

Replacement for **ADI-CSA-825**

UniProt ID

Q9NR97

Worry-free Guarantee

This antibody is covered by our [Worry-Free Guarantee](#)

Last modified: May 29, 2024



ENZO LIFE SCIENCES,
INC.
Phone: 800.942.0430
info-usa@enzolifesciences.com

European Sales Office
ENZO LIFE SCIENCES
(ELS) AG
Phone: +41 61 926 8989
info-eu@enzolifesciences.com

Belgium, The Netherlands
& Luxembourg
Phone: +32 3 466 0420
info-be@enzolifesciences.com

France
Phone: +33 472 440 655
info-fr@enzolifesciences.com

Germany
Phone: +49 7621 5500 526
info-de@enzolifesciences.com

UK & Ireland
Phone (UK customers):
0845 601 1488
Phone: +44 1392 825900
info-uk@enzolifesciences.com