

# Toll-like receptor 7 polyclonal antibody

This antibody is covered by our [Worry-Free Guarantee](#).

Citations: 11

[View Online »](#)

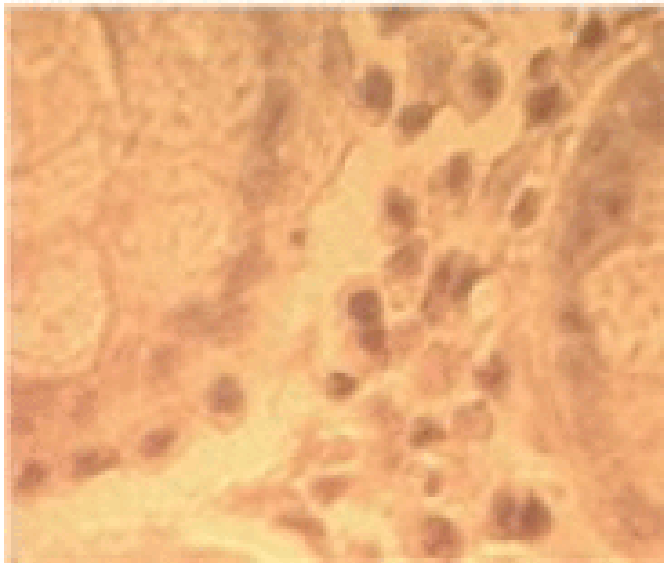
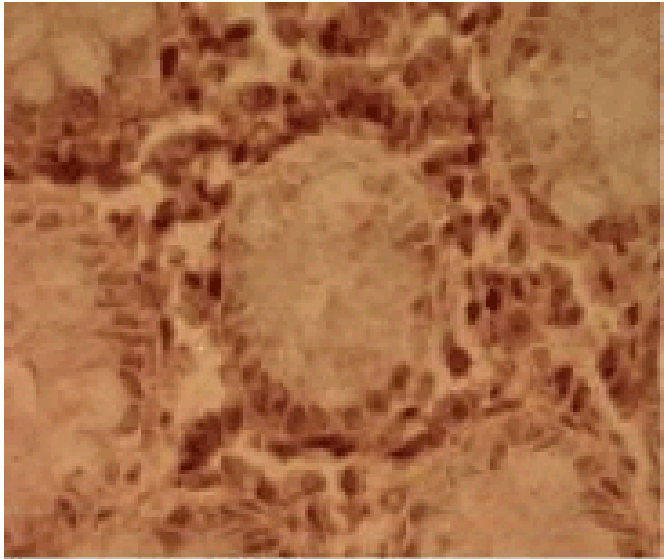
## Ordering Information

[Order Online »](#)

|                  |       |
|------------------|-------|
| ALX-210-874-C100 | 100µg |
|------------------|-------|

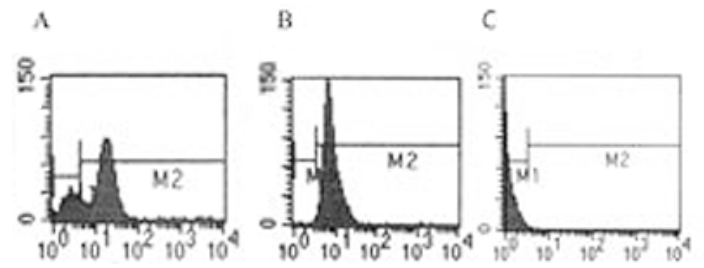
Manuals, SDS & CofA

[View Online »](#)



**Figure 3:** Immunohistochemical analysis of human colon tissue using PAb to Toll-like Receptor 7 (Prod. No. [ALX-210-874](#)) and an isotype control (bottom) at 5µg/ml. **Figure 1:** Western blot analysis of TLR7 in Raw cell lysate using Prod. No. [ALX-210-874](#) at 1µg/ml.

66777777



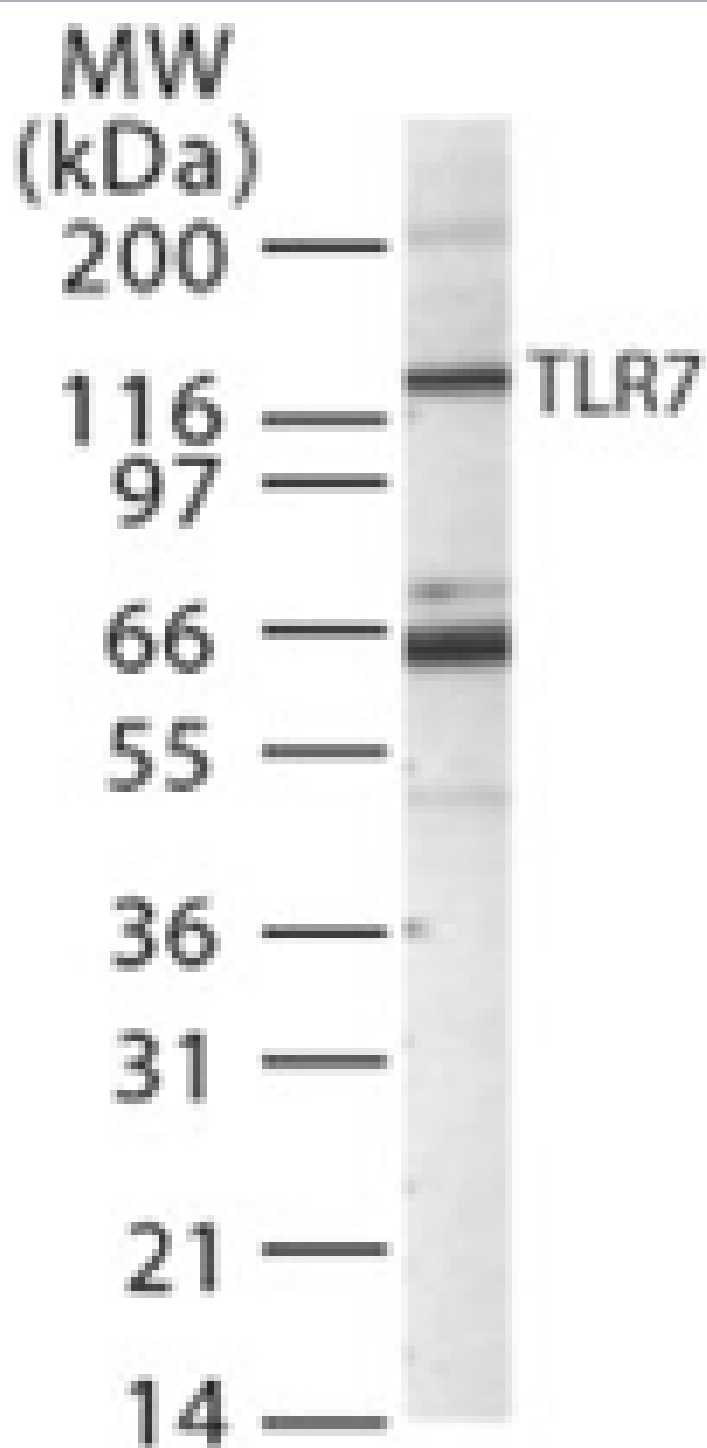
**Figure 2:** Intracellular staining by FACS analysis of TLR7 in Ramos cells (A) and Raw cells (B) using Prod. No. [ALX-210-874](#) at 2µg/ml. Histogram C shows the rabbit IgG isotype control. **Figure:** Western blot comparing three different PAb to VASP using 25µg human platelet protein. **Lane 1:** PAb to VASP (human) (Prod. N. ALX-210-898). **Lane 2:** PAb to VASP (M4) (Prod. N. ALX-210-725) (**Not available anymore!**). **Lane 3:** PAb to VASP (affinity purified) (Prod. N. ALX-210-880)., VASP (human) polyclonal antibody Western blot, VASP (human) polyclonal antibody Western blot, yes

ALX-210-898,210-898.gif,<http://static.enzolifesciences.com/fileadmin/files/image/210-898.gif>

**Figure:** Western blot comparing three different PAb to VASP using 25µg human platelet protein. **Lane 1:** PAb to VASP (human) (Prod. N. ALX-210-898). **Lane 2:** PAb to VASP (M4) (Prod. N. ALX-210-725) (**Not available anymore!**). **Lane 3:** PAb to VASP (affinity purified) (Prod. N. ALX-210-880)., VASP (human) polyclonal antibody Western blot, VASP (human) polyclonal antibody Western blot, yes

ALX-210-904,210-904.gif,<http://static.enzolifesciences.com/fileadmin/files/image/210-904.gif>

**Figure:** Western blot analysis of human and mouse cell lines with the anti-human NLRP1/NALP1 antibody (AL176) (Prod. No. [ALX-210-904](#)). **Method:** Total protein extracts (20µg) from various human (293-T



**Figure 1:** Western blot analysis of TLR7 in Raw cell lysate using Prod. No. ALX-210-874 at 1µg/ml.

## Handling & Storage

|                    |  |
|--------------------|--|
| Use/Stability      | Stable for 6 months when stored at +4°C. |
| Handling           | Avoid freeze/thaw cycles.                |
| Short Term Storage | +4°C                                     |
| Long Term Storage  | -20°C                                    |
| Shipping           | Blue Ice                                 |

## Regulatory Status

RUO - Research Use Only

## Product Details

|  |  |
|--|--|
| Alternative Name                       | TLR7   |
| Application                            | Flow Cytometry, ICC, IHC (FS), IHC (PS), IP, WB  |
| Application Notes                      | Flow Cytometry: suitable for cell surface and intracellular FC.<br>Western Blot: in human Ramos cells, additional bands are seen |
| Formulation                            | Liquid. In PBS containing 0.05% BSA and 0.05% sodium azide.  |
| Host                                   | Rabbit   |
| Immunogen                              | Synthetic peptide corresponding to aa 706-728 of human TLR7 (Toll-like receptor 7).  |
| Purity Detail                          | Protein G-affinity purified.   |
| Recommendation<br>Dilutions/Conditions | Flow Cytometry (intracellular, 0.5-5µg/106 cells)Immunohistochemistry (paraffin sections, 5-10µg/ml)Western Blot (1-3µg/ml)      |
| Species Reactivity                     | Human, Mouse, Rat  |
| UniProt ID                             | Q9NYK1   |
| Worry-free Guarantee                   | This antibody is covered by our <a href="#">Worry-Free Guarantee</a> .   |



ENZO LIFE SCIENCES,  
INC.  
Phone: 800.942.0430  
[info-  
usa@enzolifesciences.com](mailto:info-usa@enzolifesciences.com)

European Sales Office  
ENZO LIFE SCIENCES  
(ELS) AG  
Phone: +41 61 926 8989  
[info-  
eu@enzolifesciences.com](mailto:info-eu@enzolifesciences.com)

Belgium, The Netherlands  
& Luxembourg  
Phone: +32 3 466 0420  
[info-  
be@enzolifesciences.com](mailto:info-be@enzolifesciences.com)

France  
Phone: +33 472 440 655  
[info-  
fr@enzolifesciences.com](mailto:info-fr@enzolifesciences.com)

Germany  
Phone: +49 7621 5500 526  
[info-  
de@enzolifesciences.com](mailto:info-de@enzolifesciences.com)

UK & Ireland  
Phone (UK customers):  
0845 601 1488  
Phone: +44 1392 825900  
[info-  
uk@enzolifesciences.com](mailto:info-uk@enzolifesciences.com)