

# Toll-like receptor 6 (human) monoclonal antibody (86B1153.2) (FITC conjugate)

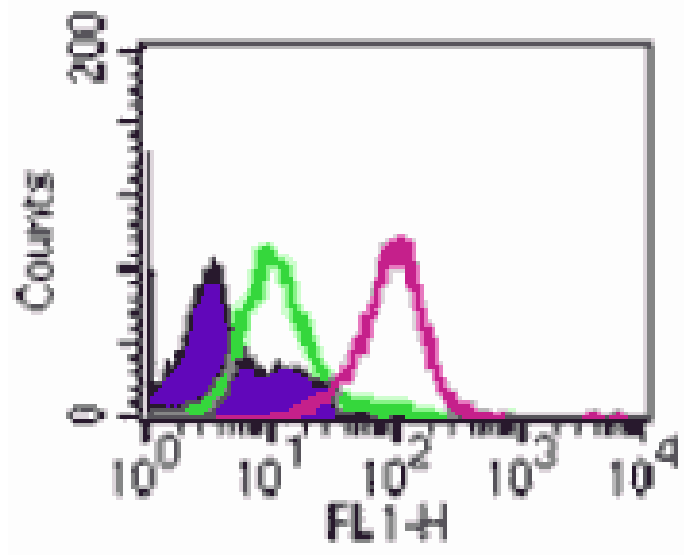
This antibody is covered by our [Worry-Free Guarantee](#).

Citations: 4

[View Online »](#)

Manuals, SDS & CofA

[View Online »](#)



## Handling & Storage

<b>Use/Stability</b>	Stable for at least 6 months when stored at +4°C.
<b>Handling</b>	Do not freeze. Protect from light.
<b>Short Term Storage</b>	+4°C
<b>Long Term Storage</b>	+4°C
<b>Shipping</b>	Blue Ice

**Regulatory Status** RUO - Research Use Only

## Product Details

<b>Alternative Name</b>	TLR6, CD286
<b>Application</b>	Flow Cytometry
<b>Application Notes</b>	Flow Cytometry: Suitable for cell surface and intracellular FC.
<b>Clone</b>	86B1153.2
<b>Formulation</b>	Liquid. In 10mM TRIS containing 150mM sodium chloride and 0.05% sodium azide.
<b>Host</b>	Mouse
<b>Immunogen</b>	Synthetic peptide corresponding to aa 408-424 in the cytoplasmic portion of human TLR6 (Toll-like receptor 6).
<b>Isotype</b>	IgG1
<b>Positive Control</b>	Ramos cells can be used as positive control.
<b>Purity Detail</b>	Protein G-affinity purified.
<b>Species Reactivity</b>	Human
<b>UniProt ID</b>	Q9Y2C9

Last modified: May 29, 2024



ENZO LIFE SCIENCES,  
INC.  
Phone: 800.942.0430  
[info-  
usa@enzolifesciences.com](mailto:info-usa@enzolifesciences.com)

European Sales Office  
ENZO LIFE SCIENCES  
(ELS) AG  
Phone: +41 61 926 8989  
[info-  
eu@enzolifesciences.com](mailto:info-eu@enzolifesciences.com)

Belgium, The Netherlands  
& Luxembourg  
Phone: +32 3 466 0420  
[info-  
be@enzolifesciences.com](mailto:info-be@enzolifesciences.com)

France  
Phone: +33 472 440 655  
[info-  
fr@enzolifesciences.com](mailto:info-fr@enzolifesciences.com)

Germany  
Phone: +49 7621 5500 526  
[info-  
de@enzolifesciences.com](mailto:info-de@enzolifesciences.com)

UK & Ireland  
Phone (UK customers):  
0845 601 1488  
Phone: +44 1392 825900  
[info-  
uk@enzolifesciences.com](mailto:info-uk@enzolifesciences.com)