

Thy-1 (human):Fc (human), (recombinant)

Human Thy-1 is a glycosyl phosphatidylinositol (GPI)- anchored glycoprotein of the immunoglobulin superfamily expressed in various cell types, particularly in cells of the neuronal system, activated microvascular endothelial cells, fibroblasts and blood stem cells. Thy-1 is involved in cell adhesion. Human Thy-1 interacts with the integrin $\alpha\beta 3$ (CD51/CD61) and Mac-1 (CD11b/CD18). In astrocytes, binding of Thy-1 to beta3-integrin promotes focal adhesion formation. Historical results have shown that human Thy-1 binds to human $\alpha\beta 3$ integrin.

Citations: 3

[View Online »](#)

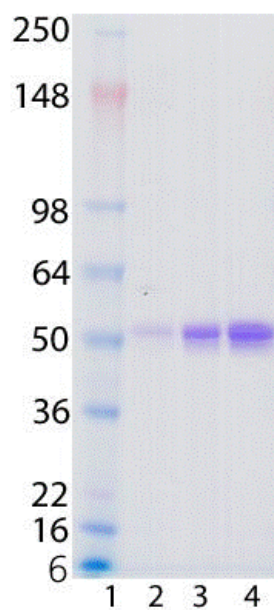
Ordering Information

[Order Online »](#)

ALX-522-091-C050	50µg
------------------	------

Manuals, SDS & CofA

[View Online »](#)



SDS-PAGE analysis of Prod. No. ALX-522-091: Lane 1: MW marker, Lane 2: 0.1, Lane 3: 0.5, Lane 4: 1 μ g Thy-1 (human):Fc (human), (recombinant).

Handling & Storage

Use/Stability	Stable for at least 6 months after receipt when stored at -20°C.
Handling	Avoid freeze/thaw cycles. After reconstitution, prepare aliquots and store at -20°C.
Short Term Storage	+4°C
Long Term Storage	-20°C
Shipping	Blue Ice

Regulatory Status RUO - Research Use Only

Product Details

Alternative Name	CD90
Concentration	1mg/ml after reconstitution.
Endotoxin Content	<0.1EU/μg purified protein (LAL test; Bio Whittaker).
Formulation	Lyophilized. Contains PBS.
Purity	≥90% (SDS-PAGE)
Reconstitution	Reconstitute with 50μl sterile distilled water. Further dilutions should be made with medium containing 5% fetal calf serum or a carrier protein.
Source	Produced in HEK 293 cells. The extracellular domain of human Thy-1 (aa 20-130) is fused to the Fc portion of human IgG1.
UniProt ID	P04216



ENZO LIFE SCIENCES,
INC.
Phone: 800.942.0430
[info-
usa@enzolifesciences.com](mailto:info-usa@enzolifesciences.com)

European Sales Office
ENZO LIFE SCIENCES
(ELS) AG
Phone: +41 61 926 8989
[info-
eu@enzolifesciences.com](mailto:info-eu@enzolifesciences.com)

Belgium, The Netherlands
& Luxembourg
Phone: +32 3 466 0420
[info-
be@enzolifesciences.com](mailto:info-be@enzolifesciences.com)

France
Phone: +33 472 440 655
[info-
fr@enzolifesciences.com](mailto:info-fr@enzolifesciences.com)

Germany
Phone: +49 7621 5500 526
[info-
de@enzolifesciences.com](mailto:info-de@enzolifesciences.com)

UK & Ireland
Phone (UK customers):
0845 601 1488
Phone: +44 1392 825900
[info-
uk@enzolifesciences.com](mailto:info-uk@enzolifesciences.com)