

TH301

Selective circadian clock protein CRY2 stabilizer

TH301 is an isoform-selective stabilizer of the circadian clock protein CRY2. It dose-dependently lengthened the circadian period in Bmal1-dLuc and Per2-dLuc reporter cells. TH301 strongly enhanced rosiglitazone-dependent brown adipocyte differentiation revealing the importance of CRY-dependent regulation of energy metabolism and a possible new lead for anti-obesity therapeutics.

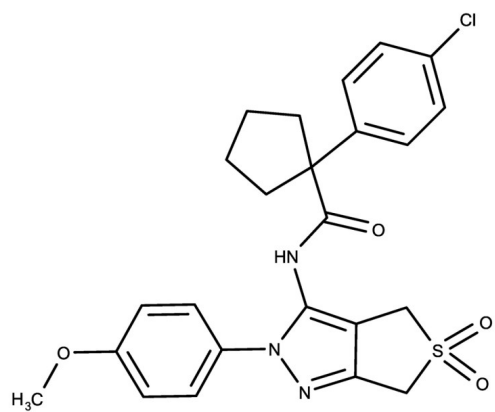
Ordering Information

[Order Online »](#)

ENZ-CHM473-0025	25mg
-----------------	------

Manuals, SDS & CofA

[View Online »](#)



Handling & Storage

Use/Stability As indicated on product label or CoA when stored as recommended.

Long Term Storage -20°C

Shipping Ambient Temperature

Regulatory Status RUO - Research Use Only

Product Details

Alternative Name 1-(4-Chlorophenyl)-N-[2,6-dihydro-2-(4-methoxyphenyl)-5,5-dioxido-4H-thieno[3,4-c]pyrazol-3-yl]cyclopentanecarboxamide

Appearance White solid.

CAS 450338-32-6

Couple Target Cryptochrome-2

Formula $C_{24}H_{24}ClN_3O_4S$

Identity Determined by NMR.

MW 485.98

Purity ≥98% (HPLC)

Solubility Soluble in DMSO (25 mg/ml).



ENZO LIFE SCIENCES,
INC.
Phone: 800.942.0430
info-usa@enzolifesciences.com

European Sales Office
ENZO LIFE SCIENCES
(ELS) AG
Phone: +41 61 926 8989
info-eu@enzolifesciences.com

Belgium, The Netherlands
& Luxembourg
Phone: +32 3 466 0420
info-fr@enzolifesciences.com

France
Phone: +33 472 440 655
info-fr@enzolifesciences.com

Germany
Phone: +49 7621 5500 526
info-de@enzolifesciences.com

UK & Ireland
Phone (UK customers):
0845 601 1488
Phone: +44 1392 825900
info-uk@enzolifesciences.com