

TFPI polyclonal antibody

This antibody is covered by our [Worry-Free Guarantee](#).

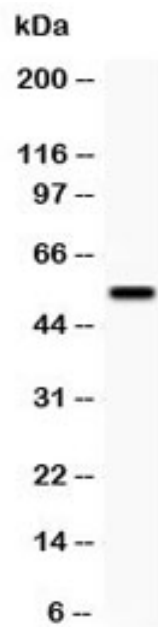
Ordering Information

[Order Online »](#)

ENZ-ABS921-0100	100µg
-----------------	-------

Manuals, SDS & CofA

[View Online »](#)



Western blot testing of TFPI antibody and SMMC-7721 lysate; Expected size: 34~41KD

Handling & Storage

Use/Stability	After reconstitution, the TFPI antibody can be stored for up to one month at +4°C. For long-term, aliquot and store at -20°C.
Handling	Avoid freeze/thaw cycles.
Long Term Storage	-20°C
Shipping	Blue Ice

Regulatory Status

RUO - Research Use Only

Product Details

Alternative Name	Tissue factor pathway inhibitor
Application	IHC (PS), WB
Formulation	Lyophilized from 1X PBS containing 2.5% BSA and 0.025% sodium azide./thimerosal
Host	Rabbit
Immunogen	Human TFPI (Q261ECLRACKKGFIQRISKGGL280).
Isotype	IgG
Purity Detail	Antigen affinity purified.
Recommendation Dilutions/Conditions	Immunohistochemistry (FFPE) (0.5-1µg/ml)Western blot (0.5-1µg/ml)Suggested dilutions/conditions may not be available for all applications.Optimal conditions must be determined individually for each application.
Species Reactivity	Human
UniProt ID	P10646
Worry-free Guarantee	This antibody is covered by our Worry-Free Guarantee

Last modified: July 12, 2024



ENZO LIFE SCIENCES,
INC.
Phone: 800.942.0430
[info-
usa@enzolifesciences.com](mailto:info-usa@enzolifesciences.com)

European Sales Office
ENZO LIFE SCIENCES
(ELS) AG
Phone: +41 61 926 8989
[info-
eu@enzolifesciences.com](mailto:info-eu@enzolifesciences.com)

Belgium, The Netherlands
& Luxembourg
Phone: +32 3 466 0420
[info-
be@enzolifesciences.com](mailto:info-be@enzolifesciences.com)

France
Phone: +33 472 440 655
[info-
fr@enzolifesciences.com](mailto:info-fr@enzolifesciences.com)

Germany
Phone: +49 7621 5500 526
[info-
de@enzolifesciences.com](mailto:info-de@enzolifesciences.com)

UK & Ireland
Phone (UK customers):
0845 601 1488
Phone: +44 1392 825900
[info-
uk@enzolifesciences.com](mailto:info-uk@enzolifesciences.com)