

TAP1 polyclonal antibody

TAP1 and TAP2 are two structurally related subunits of the Transporter associated with antigen processing (TAP). The TAP complex is a member of the ATP binding cassette (ABC) family of transmembrane transporters. The TAP transporter is an essential component of the MHC class I antigen presentation pathway by binding peptides in its cytosolic part and subsequently translocating the peptides into the lumen of the endoplasmic reticulum where assembly of MHC class I and peptide takes place.

This antibody is covered by our [Worry-Free Guarantee](#).

Citations: 6

[View Online »](#)

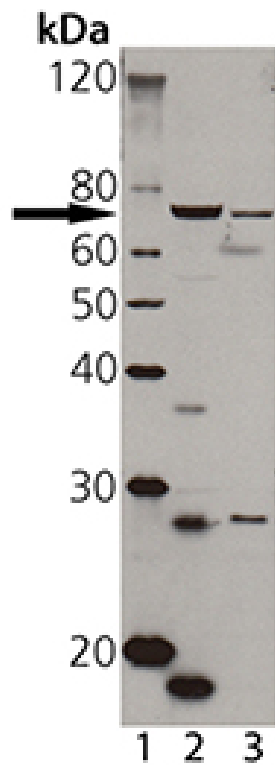
Ordering Information

[Order Online »](#)

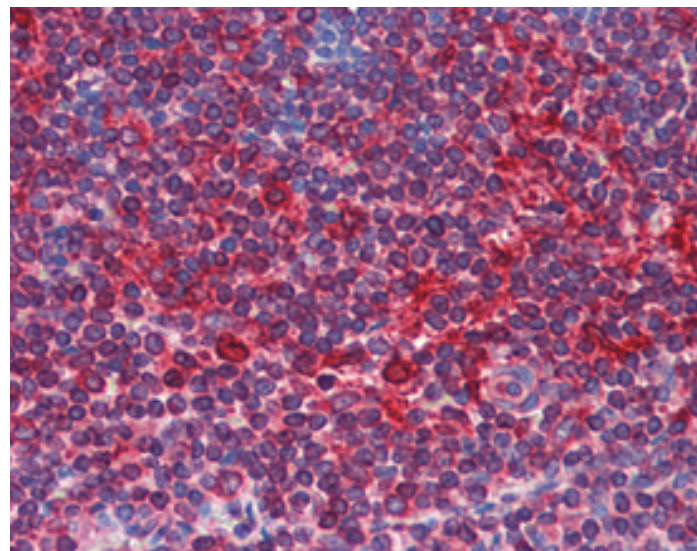
ADI-CSA-620-E	100µl
---------------	-------

Manuals, SDS & CofA

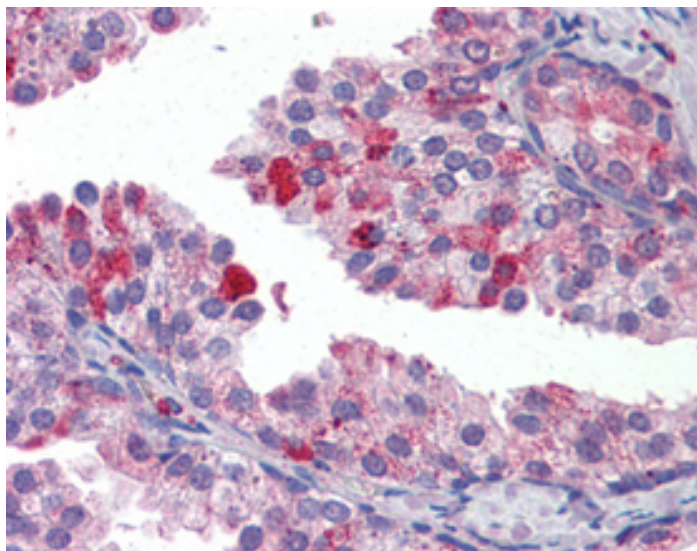
[View Online »](#)



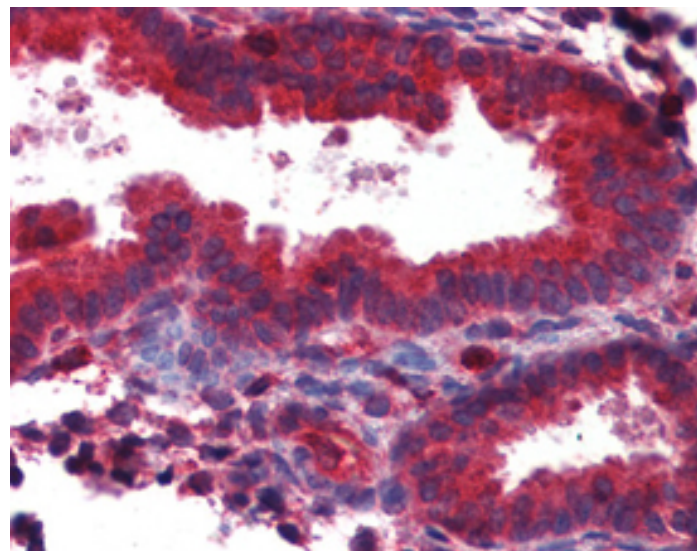
Western blot analysis of TAP1, pAb (Prod. No. ADI-CSA-620): Lane 1: MW marker, Lane 2: A431 cell lysate, Lane 3: HeLa cell lysate (Prod. No. ADI-LYC-HL100)



IHC Analysis: Human tonsil tissue stained with TAP1, pAb at 1:100.



IHC Analysis: Human prostate tissue stained with TAP1, pAb at 1:100.



IHC Analysis: Human uterus tissue stained with TAP1, pAb at 1:100.

Handling & Storage

Long Term Storage -20°C

Shipping Blue Ice

Regulatory Status RUO - Research Use Only

Product Details

Alternative Name Transporter Associated with Antigen Processing 1

Application IHC (PS), IP, WB

Application Notes Detects a band of ~70kDa by Western blot.

Formulation Liquid. Whole rabbit serum.

Host Rabbit

Immunogen Synthetic peptide corresponding to a portion of human TAP1 .

Recommendation Dilutions/Conditions Immunoprecipitation (1:100)Western Blot (ECL, 1:1,000-1:4000)Suggested dilutions/conditions may not be available for all applications.Optimal conditions must be determined individually for each application.

Source Purified from rabbit serum.

Species Reactivity Human, Rat

UniProt ID Q03518

Worry-free Guarantee This antibody is covered by our [Worry-Free Guarantee](#).



ENZO LIFE SCIENCES,
INC.
Phone: 800.942.0430
[info-
usa@enzolifesciences.com](mailto:info-usa@enzolifesciences.com)

European Sales Office
ENZO LIFE SCIENCES
(ELS) AG
Phone: +41 61 926 8989
[info-
eu@enzolifesciences.com](mailto:info-eu@enzolifesciences.com)

Belgium, The Netherlands
& Luxembourg
Phone: +32 3 466 0420
[info-
be@enzolifesciences.com](mailto:info-be@enzolifesciences.com)

France
Phone: +33 472 440 655
[info-
fr@enzolifesciences.com](mailto:info-fr@enzolifesciences.com)

Germany
Phone: +49 7621 5500 526
[info-
de@enzolifesciences.com](mailto:info-de@enzolifesciences.com)

UK & Ireland
Phone (UK customers):
0845 601 1488
Phone: +44 1392 825900
[info-
uk@enzolifesciences.com](mailto:info-uk@enzolifesciences.com)