

SUMO-1 (human) polyclonal antibody

SUMO (small ubiquitin-related modifier) is a member of a family of ubiquitin-like proteins involved in the regulation of the cellular functions of a wide variety of proteins. Four members of the SUMO family have been described in vertebrates, SUMO-1 and the close homologues SUMO-2 and SUMO-3, with some 50% homology between SUMO-1 and SUMO-2/3. Although a fourth SUMO (SUMO-4) has been reported, there remains considerable debate as to whether this is a real and expressed gene product.

This antibody is covered by our [Worry-Free Guarantee](#).

Citations: 3

[View Online »](#)

Ordering Information

[Order Online »](#)

BML-PW0505A-0025	25µg
BML-PW0505A-0100	100µg

Manuals, SDS & CofA

[View Online »](#)

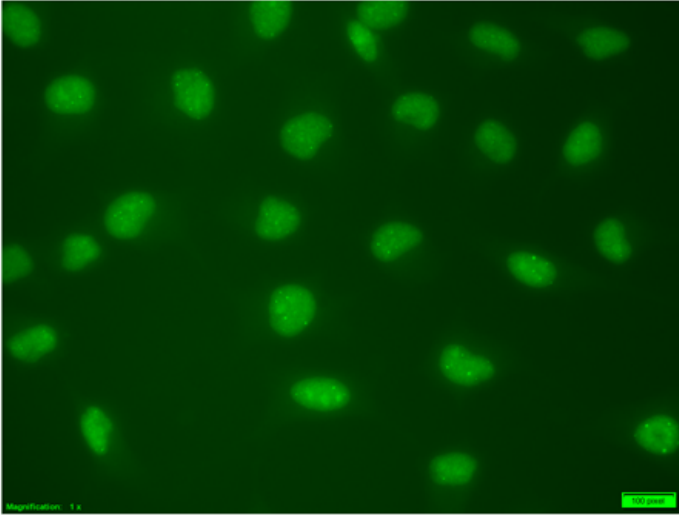


Figure 1: HeLa cells were fixed with paraformaldehyde and stained with SUMO-1 antibody (BML-PW0505A) at 1:100 dilution.

Handling & Storage

Use/Stability	Stable for at least 1 year after receipt when stored at -20°C. Store diluted antibody at +4°C, do not freeze and use within 1 month.
Handling	Avoid freeze/thaw cycles. After opening, prepare aliquots and store at -20°C.
Short Term Storage	+4°C
Long Term Storage	-20°C
Shipping	Blue Ice

Regulatory Status

RUO - Research Use Only

Product Details

Alternative Name	Sentrin-1, Small ubiquitin-related modifier 1
Application	ICC, IP, WB
Crossreactivity	Species cross-reactivity expected to be high due to conservation of SUMO sequence.
Formulation	Liquid. In PBS containing 50% glycerol and 0.09% sodium azide.
Host	Rabbit
Immunogen	Full length recombinant human SUMO-1.
Purity Detail	Protein A affinity purified.
Source	Purified from rabbit serum.
Species Reactivity	Human
UniProt ID	P63165
Worry-free Guarantee	This antibody is covered by our Worry-Free Guarantee .



ENZO LIFE SCIENCES,
INC.
Phone: 800.942.0430
[info-
usa@enzolifesciences.com](mailto:info-usa@enzolifesciences.com)

European Sales Office
ENZO LIFE SCIENCES
(ELS) AG
Phone: +41 61 926 8989
[info-
eu@enzolifesciences.com](mailto:info-eu@enzolifesciences.com)

Belgium, The Netherlands
& Luxembourg
Phone: +32 3 466 0420
[info-
be@enzolifesciences.com](mailto:info-be@enzolifesciences.com)

France
Phone: +33 472 440 655
[info-
fr@enzolifesciences.com](mailto:info-fr@enzolifesciences.com)

Germany
Phone: +49 7621 5500 526
[info-
de@enzolifesciences.com](mailto:info-de@enzolifesciences.com)

UK & Ireland
Phone (UK customers):
0845 601 1488
Phone: +44 1392 825900
[info-
uk@enzolifesciences.com](mailto:info-uk@enzolifesciences.com)