

# ST2 polyclonal antibody

ST2 is a member of a superfamily containing the interleukin-1 receptor and the Toll-like receptors (TLRs). ST2 was originally identified as a protein whose production was stimulated by various proliferation inducing agents such as PDGF and FGF. Additionally, it has been shown to negatively regulate IL-1 receptor and Toll-like receptor (TLR) 4 signaling and to maintain endotoxin tolerance.

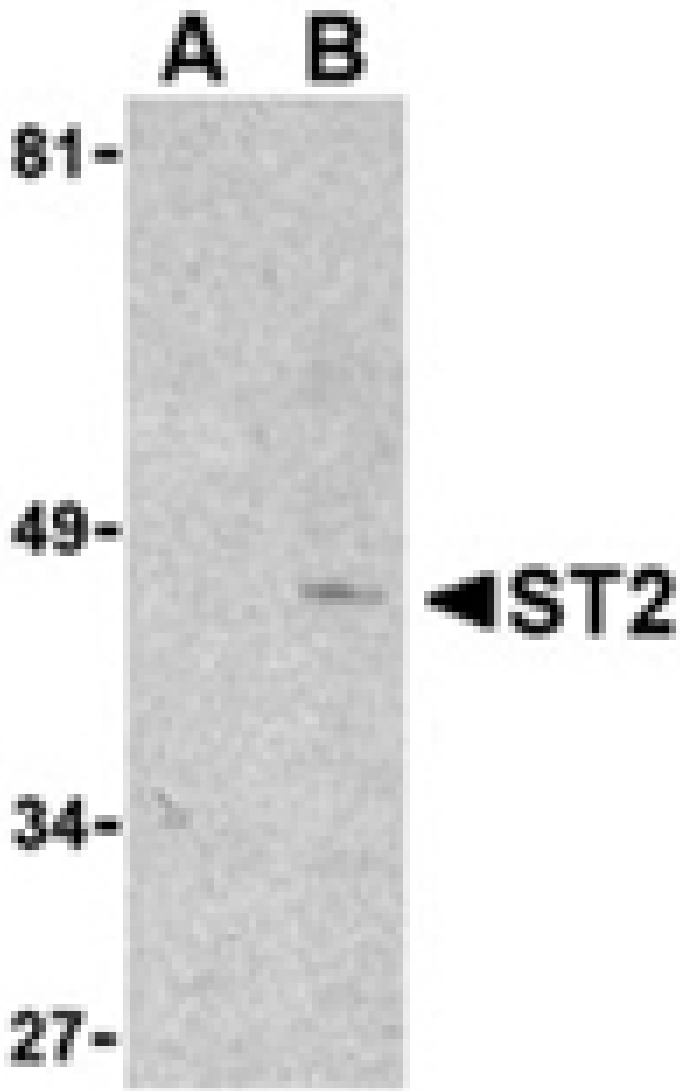
This antibody is covered by our [Worry-Free Guarantee](#).

Citations: 1

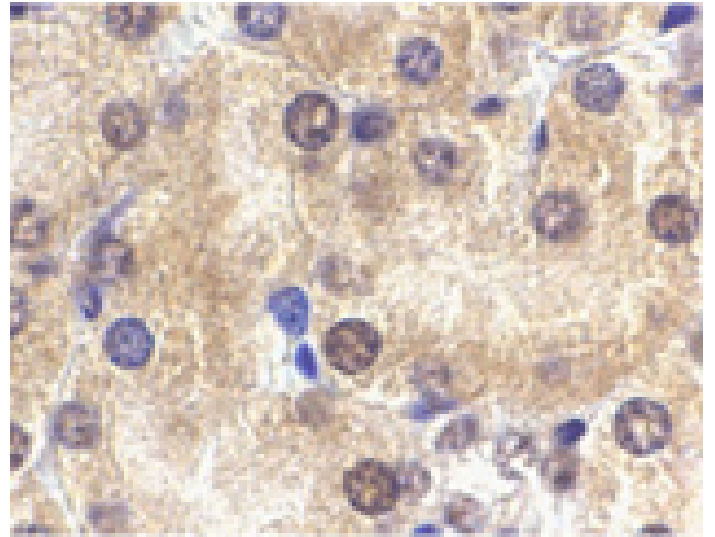
[View Online »](#)

Manuals, SDS & CofA

[View Online »](#)



Western blot analysis of ST2 in mouse kidney lysate with ST2 antibody at 1 $\mu$ g/ml in the presence (lane A) or absence (lane B) of 1 $\mu$ g blocking peptide.



Immunohistochemistry analysis of ST2 in mouse kidney tissue with ST2 antibody at 2 $\mu$ g/ml.

## Handling & Storage

Long Term Storage -20°C

Shipping Blue Ice

**Regulatory Status** RUO - Research Use Only

## Product Details

Alternative Name	Interleukin-1 receptor-like 1, Lymphocyte antigen 84
Application	IHC, WB
Application Notes	Detects a band of ~45kDa by Western blot.
Formulation	Liquid. In PBS containing 0.02% sodium azide.
GenBank ID	BAA02854
Host	Rabbit
Immunogen	Synthetic peptide corresponding to the sequence near the N-terminus of mouse ST2. The sequence is common to all three ST2 isoforms.
Purity Detail	Peptide affinity purified.
Recommendation Dilutions/Conditions	Immunohistochemistry (2µg/ml)Western Blot (1-2µg/ml)Suggested dilutions/conditions may not be available for all applications.Optimal conditions must be determined individually for each application.
Species Reactivity	Human, Mouse
UniProt ID	P14719
Worry-free Guarantee	This antibody is covered by our <a href="#">Worry-Free Guarantee</a>