

Sphingolactone-24

Sphingomyelinase inhibitor

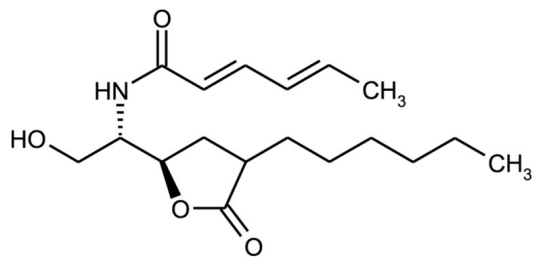
Selective and irreversible inhibitor of neutral sphingomyelinase (N-SMase).

Citations: 1

[View Online »](#)

Manuals, SDS & CofA

[View Online »](#)



Handling & Storage

Use/Stability	As indicated on product label or CoA when stored as recommended.
Handling	Protect from light.
Long Term Storage	-20°C
Shipping	Ambient Temperature

Regulatory Status RUO - Research Use Only

Product Details

Appearance	White waxy solid.
CAS	881177-99-7
Couple Target	Sphingomyelinase
Couple Type	Inhibitor
Formula	$C_{18}H_{29}NO_4$
Identity	Identity determined by MS, 1H- and 13C-NMR.
MW	323.4
Purity	≥95%
Solubility	Soluble in DMSO (10mg/ml).

Last modified: May 29, 2024



ENZO LIFE SCIENCES,
INC.
Phone: 800.942.0430
[info-
usa@enzolifesciences.com](mailto:info-usa@enzolifesciences.com)

European Sales Office
ENZO LIFE SCIENCES
(ELS) AG
Phone: +41 61 926 8989
[info-
eu@enzolifesciences.com](mailto:info-eu@enzolifesciences.com)

Belgium, The Netherlands
& Luxembourg
Phone: +32 3 466 0420
[info-
be@enzolifesciences.com](mailto:info-be@enzolifesciences.com)

France
Phone: +33 472 440 655
[info-
fr@enzolifesciences.com](mailto:info-fr@enzolifesciences.com)

Germany
Phone: +49 7621 5500 526
[info-
de@enzolifesciences.com](mailto:info-de@enzolifesciences.com)

UK & Ireland
Phone (UK customers):
0845 601 1488
Phone: +44 1392 825900
[info-
uk@enzolifesciences.com](mailto:info-uk@enzolifesciences.com)