

Shc monoclonal antibody (11F6)

The Src homology 2 domain containing (Shc) adaptor protein links growth factor, cytokine, and antigen receptor stimulation to the Ras signaling pathway, and plays a critical role in insulin signaling, tumorigenesis, and hematopoietic cell growth and differentiation. Structurally, Shc is composed of an N-terminal phosphotyrosine binding (PTB) domain, a medial CH1 domain, and a C-terminal SH2 domain. Upon binding to activate cell-surface receptors, Shc is phosphorylated at three tyrosine residues (Tyr239, Tyr240, Tyr317) triggering recognition of Shc by SH2-containing proteins such as Grb2.

This antibody is covered by our [Worry-Free Guarantee](#).

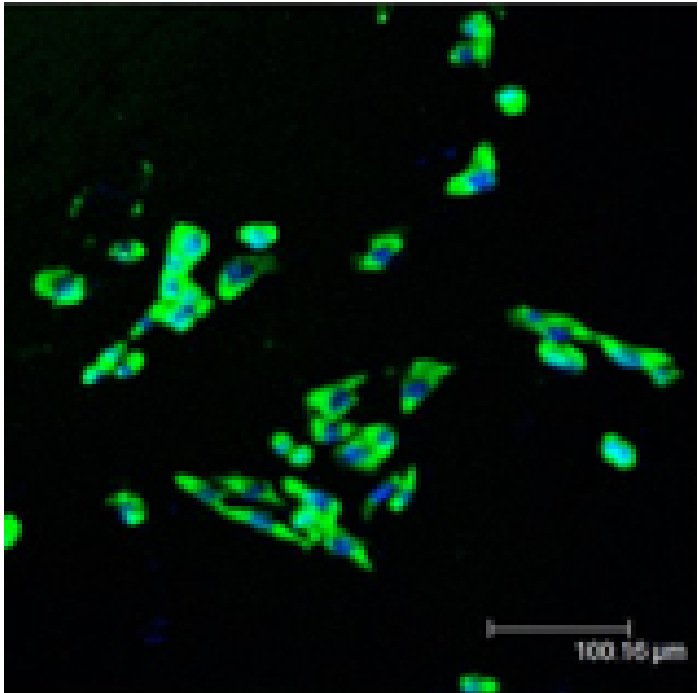
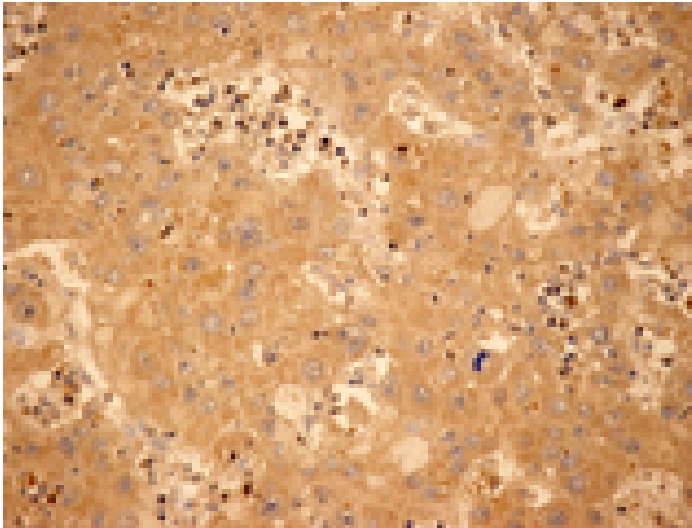
Ordering Information

[Order Online »](#)

ADI-905-665-100	100µg
-----------------	-------

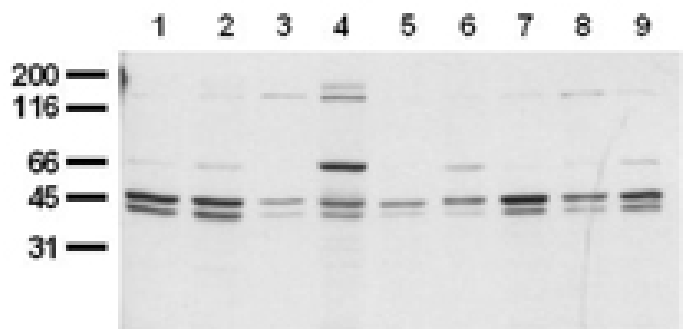
Manuals, SDS & CofA

[View Online »](#)



Immunohistochemistry analysis of human hepatoma tissue with Shc mAb (11F6).

Immunofluorescent analysis (confocal) staining of V79 cells using Shc mAb (11F6) (green); nuclei are stained in blue pseudocolor using DRAQ5.



Western blot analysis of cancer cell lysates with Shc mAb (11F6); HeLa (1), HepG2 (2), HEK293 (3), SH-SY5Y (4), MDCK (5), PC12 (6), CMT93 (7), Neuro 2A (8), NIH-3T3 (9).

Handling & Storage

Use/Stability Stable at -80°C up to 1 year, at 4°C up to 3 months.

Long Term Storage -20°C

Shipping Blue Ice

Regulatory Status RUO - Research Use Only

Product Details

Alternative Name Src homology 2 domain containing

Application ELISA, ICC, IHC, WB

Application Notes Detects bands of ~46kDa, ~52kDa and ~66kDa by Western blot.

Clone 11F6

Formulation Lyophilized from 1ml of 2x PBS containing 0.09% sodium azide, PEG, and sucrose.

Host Mouse

Immunogen Synthetic peptide corresponding to the sequence near the C-terminus of Shc.

Isotype IgG1

Purity Detail Thiophilic adsorption and size exclusion chromatography purified.

Recommendation Dilutions/Conditions Immunohistochemistry (1:50)Western Blot (1µg/ml, ECL)Suggested dilutions/conditions may not be available for all applications.Optimal conditions must be determined individually for each application.

Reconstitution Reconstitute with 1ml water (15 minutes at room temperature).

Species Reactivity Human, Mouse

UniProt ID

P29353

Worry-free Guarantee

This antibody is covered by our [Worry-Free Guarantee](#)

Last modified: May 29, 2024



ENZO LIFE SCIENCES,
INC.
Phone: 800.942.0430
[info-
usa@enzolifesciences.com](mailto:info-usa@enzolifesciences.com)

European Sales Office
ENZO LIFE SCIENCES
(ELS) AG
Phone: +41 61 926 8989
[info-
eu@enzolifesciences.com](mailto:info-eu@enzolifesciences.com)

Belgium, The Netherlands
& Luxembourg
Phone: +32 3 466 0420
[info-
be@enzolifesciences.com](mailto:info-be@enzolifesciences.com)

France
Phone: +33 472 440 655
[info-
fr@enzolifesciences.com](mailto:info-fr@enzolifesciences.com)

Germany
Phone: +49 7621 5500 526
[info-
de@enzolifesciences.com](mailto:info-de@enzolifesciences.com)

UK & Ireland
Phone (UK customers):
0845 601 1488
Phone: +44 1392 825900
[info-
uk@enzolifesciences.com](mailto:info-uk@enzolifesciences.com)