

Rp-2'-AHC-cAMPS- Agarose

The protein kinase A inhibitor Rp-cAMPS immobilized on agarose by an aminohexylcarbamoyl spacer attached to the ribose 2' position of the ligand. The gel can be used for affinity chromatography of various cyclic nucleotide-responsive proteins, especially those which tolerate modification of the 2' ribose hydroxyl group such as some phosphodiesterases. This type of gel is also available with immobilized PDE-resistant Sp-cAMPS (Sp-2'-AHC-cAMPS-Agarose (Prod. No. [BLG-A050](#))) or with normal cAMP (2'-AHC-cAMP-Agarose (Prod. No.: [BLG-A058](#))).

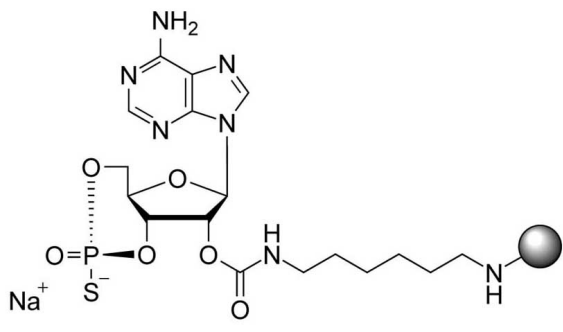
Ordering Information

[Order Online »](#)

BLG-A049-06	0.6ml
BLG-A049-25	2.5ml
BLG-A049-60	6ml

Manuals, SDS & CofA

[View Online »](#)



Handling & Storage

Long Term Storage +4°C

Shipping Ambient Temperature

Regulatory Status RUO - Research Use Only

Product Details

Alternative Name 2'-(6-Aminohexylcarbamoyl)adenosine-3',5'-cyclic monophosphorothioate, Rp-isomer; immobilized on agarose gel

Application Notes

Chromatography: After equilibration with about 10 column volumes of starting buffer the affinity column is loaded with the protein solution at 50 – 100 µl/min. In order to elute other nucleotide-dependent proteins unspecifically bound, the column is washed, e.g. with 1mM 5'- AMP.

Elution of the target protein is performed by a cyclic nucleotide gradient. For elution of phosphodiesterases it could be advisable to use the highly hydrolysis-resistant phosphorothioate-modified analogs or PDE inhibitors.

Suitable buffer systems for your special application have to be tested, but phosphate should be not optimal since one essential affinity interaction of cyclic nucleotides towards their target receptors is the cyclic phosphate.

Regeneration can be achieved by a combination of up to 100 mM cAMP and buffer salts or 8 M urea.

Technical Info / Product Notes For the Original Manufacturer's data sheet please [click here](#).



ENZO LIFE SCIENCES,
INC.
Phone: 800.942.0430
info-usa@enzolifesciences.com

European Sales Office
ENZO LIFE SCIENCES
(ELS) AG
Phone: +41 61 926 8989
info-eu@enzolifesciences.com

Belgium, The Netherlands
& Luxembourg
Phone: +32 3 466 0420
info-be@enzolifesciences.com

France
Phone: +33 472 440 655
info-fr@enzolifesciences.com

Germany
Phone: +49 7621 5500 526
info-de@enzolifesciences.com

UK & Ireland
Phone (UK customers):
0845 601 1488
Phone: +44 1392 825900
info-uk@enzolifesciences.com