

# ROR1 polyclonal antibody

This antibody is covered by our [Worry-Free Guarantee](#).

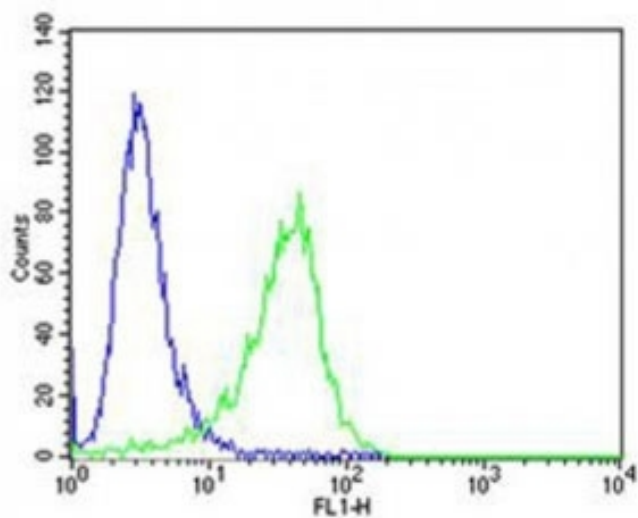
## Ordering Information

[Order Online »](#)

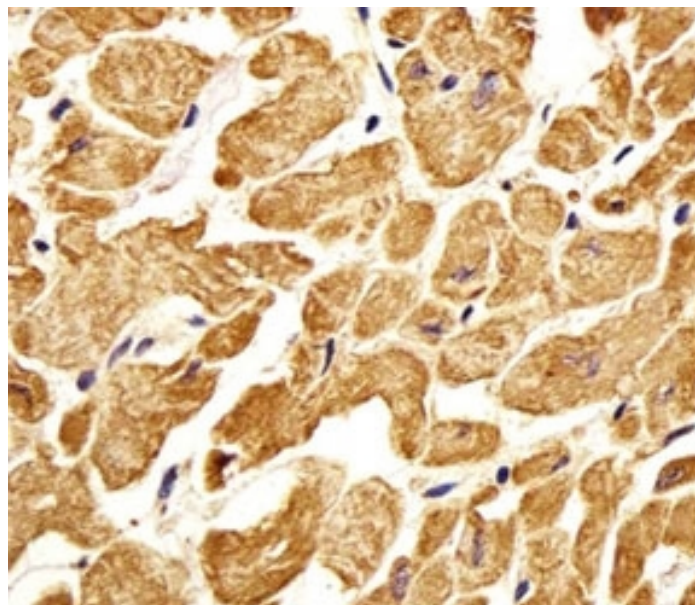
ENZ-ABS917-0200	0.2ml
-----------------	-------

## Manuals, SDS & CofA

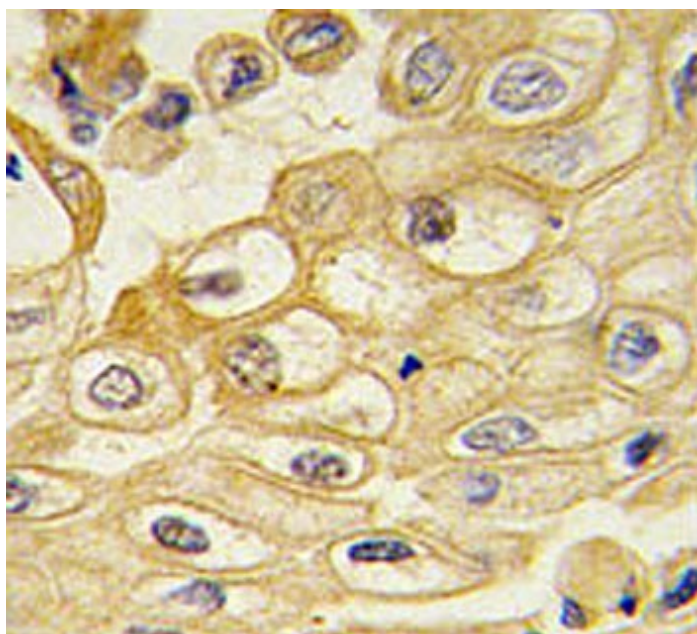
[View Online »](#)



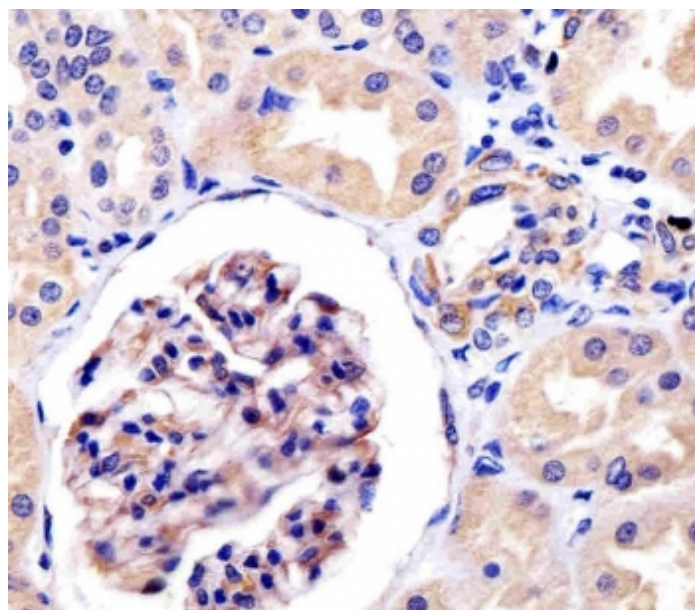
Flow cytometric analysis of A549 cells using ROR1 antibody (green) compared to an isotype control of rabbit IgG (blue). Ab was diluted at 1:25 dilution. An Alexa Fluor 488 goat anti-rabbit IgG was used as the secondary Ab.



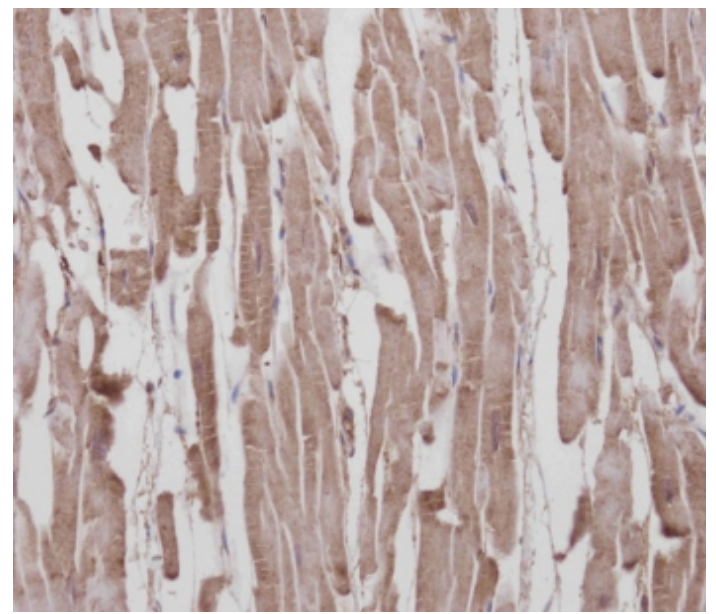
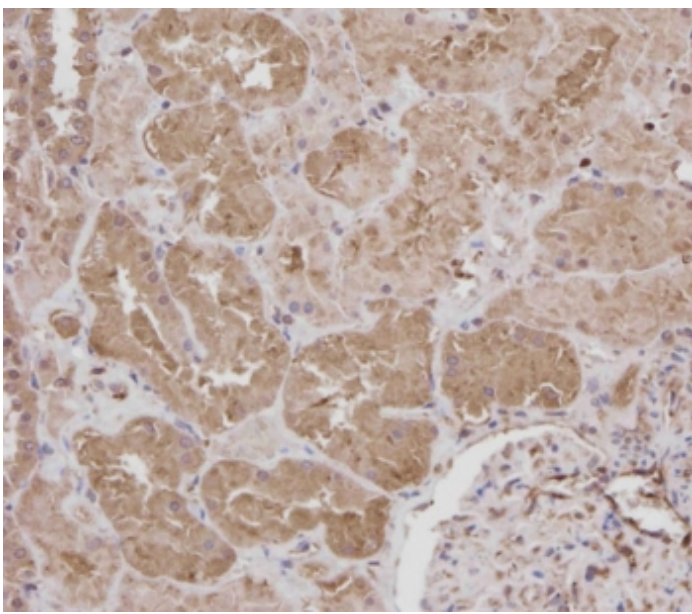
Immunohistochemical analysis of paraffin-embedded human heart section using ROR1 antibody. Ab was diluted at 1:25 dilution.



IHC testing of FFPE human lung carcinoma with ROR1 antibody.

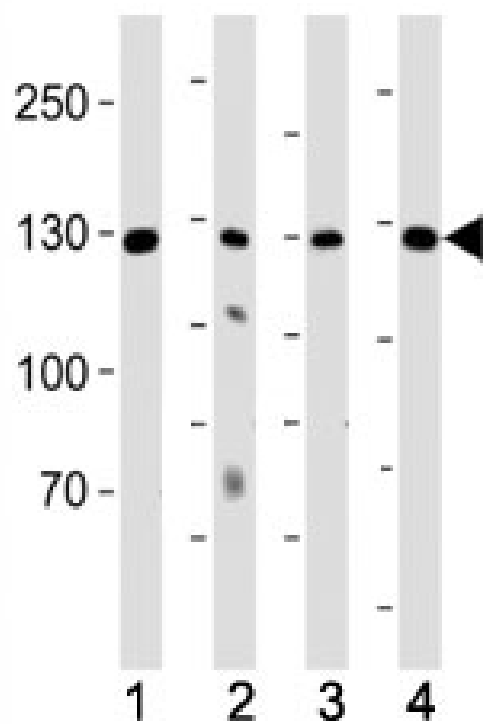


IHC testing of FFPE human kidney tissue with ROR1 antibody at 1:25 dilution. HIER: steamed antigen retrieval with pH6 citrate buffer.

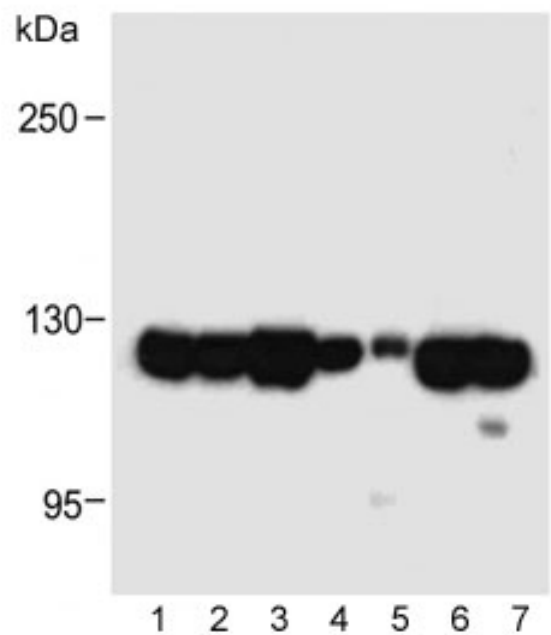


IHC testing of FFPE human kidney tissue with ROR1 antibody at 1:100 dilution. HIER: steamed antigen retrieval with pH9 EDTA buffer.

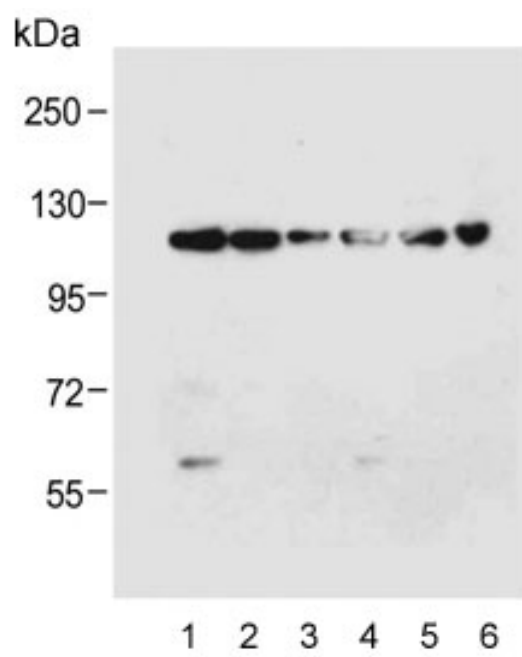
IHC testing of FFPE human heart tissue with ROR1 antibody at 1:100 dilution. HIER: steamed antigen retrieval with pH9 EDTA buffer.



Western blot testing of human samples 1) K562 and 2) lung lysate and mouse samples 3) kidney and 4) heart lysate with ROR1 antibody at 1:1000. Predicted molecular weight of ROR1 isoforms: 105 kDa and 130 kDa.



Western blot testing of human samples 1) K562 cell line, 2) MDA-MB-231, 3) PANC-1, 4) NCI-H226, 5) fetal lung and mouse samples 6) NIH3T3 and 7) heart lysate with ROR1 antibody at 1:1000. Predicted molecular weight of ROR1 isoforms: 105 kDa and 130 kDa.



Western blot testing of human lysate samples 1) K562, 2) MDA-MB-231, 3) NCI-H226, 4) A549 and mouse samples 5) NIH3T3 and 6) kidney lysate with ROR1 antibody at 1:4000. Predicted molecular weight of ROR1 isoforms: 105 kDa and 130 kDa.

# Handling & Storage

Use/Stability	Store at +4°C for up to one month.
Handling	For long term, aliquot the ROR1 antibody and store frozen at -20°C or colder. Avoid freeze/thaw cycles.
Short Term Storage	+4°C
Long Term Storage	-20°C
Shipping	Blue Ice

## Regulatory Status

RUO - Research Use Only

# Product Details

Alternative Name	Inactive tyrosine-protein kinase transmembrane receptor ROR1
Application	ELISA, Flow Cytometry, IHC, WB
Formulation	Liquid. In 1X PBS, pH 7.4, containing 0.09% sodium azide.
Host	Rabbit
Immunogen	Recombinant human ROR1 protein (aa 112 – 399).
Isotype	Ig
Purity Detail	Antigen affinity purified.
Recommendation Dilutions/Conditions	Flow Cytometry (1:25)Immunohistochemistry (paraffin sections) (1:10-1:50)Western blot (1:1,000-1:2,000)Suggested dilutions/conditions may not be available for all applications.Optimal conditions must be determined individually for each application.
Species Reactivity	Human, Mouse
UniProt ID	Q01973
Worry-free Guarantee	This antibody is covered by our <a href="#">Worry-Free Guarantee</a> .



ENZO LIFE SCIENCES,  
INC.  
Phone: 800.942.0430  
[info-  
usa@enzolifesciences.com](mailto:info-usa@enzolifesciences.com)

European Sales Office  
ENZO LIFE SCIENCES  
(ELS) AG  
Phone: +41 61 926 8989  
[info-  
eu@enzolifesciences.com](mailto:info-eu@enzolifesciences.com)

Belgium, The Netherlands  
& Luxembourg  
Phone: +32 3 466 0420  
[info-  
be@enzolifesciences.com](mailto:info-be@enzolifesciences.com)

France  
Phone: +33 472 440 655  
[info-  
fr@enzolifesciences.com](mailto:info-fr@enzolifesciences.com)

Germany  
Phone: +49 7621 5500 526  
[info-  
de@enzolifesciences.com](mailto:info-de@enzolifesciences.com)

UK & Ireland  
Phone (UK customers):  
0845 601 1488  
Phone: +44 1392 825900  
[info-  
uk@enzolifesciences.com](mailto:info-uk@enzolifesciences.com)