

# Rolipram

## PDE inhibitor

Selective, cell permeable inhibitor of cAMP-specific phosphodiesterase (PDE IV,  $IC_{50}=1\text{ }\mu\text{M}$ ). A rolipram insensitive PDE IV subtype has been described.

Citations: 16

[View Online »](#)

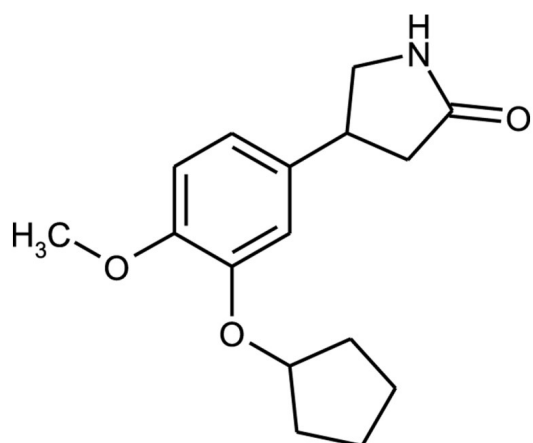
## Ordering Information

[Order Online »](#)

BML-PD175-0010	10mg
BML-PD175-0050	50mg

## Manuals, SDS & CofA

[View Online »](#)



## Handling & Storage

Use/Stability	As indicated on product label or CoA when stored as recommended. Stable for at least 5 year after receipt when stored at +20°C. Stock solutions are stable for up to 3 months at -20°C.
Long Term Storage	Ambient
Shipping	Ambient Temperature

## Regulatory Status

RUO - Research Use Only

## Product Details

Alternative Name	(±)-4-[3-(Cyclopentyloxy)-4-methoxyphenyl]-2-pyrrolidinone
Appearance	White to off-white solid.
CAS	61413-54-5
Couple Target	PDE
Couple Type	Inhibitor
Formula	$C_{16}H_{21}NO_3$
MI	14: 8251
MW	275.4
Purity	≥98% (TLC)
RTECS	UY5749237
Solubility	Soluble in DMSO (25mg/ml, warm), 100% ethanol (25mg/ml, warm) or acetone.

**Technical Info / Product Notes** Note: Product is not sterile.



ENZO LIFE SCIENCES,  
INC.  
Phone: 800.942.0430  
[info-  
usa@enzolifesciences.com](mailto:info-usa@enzolifesciences.com)

European Sales Office  
ENZO LIFE SCIENCES  
(ELS) AG  
Phone: +41 61 926 8989  
[info-  
eu@enzolifesciences.com](mailto:info-eu@enzolifesciences.com)

Belgium, The Netherlands  
& Luxembourg  
Phone: +32 3 466 0420  
[info-  
be@enzolifesciences.com](mailto:info-be@enzolifesciences.com)

France  
Phone: +33 472 440 655  
[info-  
fr@enzolifesciences.com](mailto:info-fr@enzolifesciences.com)

Germany  
Phone: +49 7621 5500 526  
[info-  
de@enzolifesciences.com](mailto:info-de@enzolifesciences.com)

UK & Ireland  
Phone (UK customers):  
0845 601 1488  
Phone: +44 1392 825900  
[info-  
uk@enzolifesciences.com](mailto:info-uk@enzolifesciences.com)