

Rhod-2 AM (ultra pure)

Calcium dye

Rhod-2 AM has the longest fluorescent emission signal of the commonly used calcium indicators. It contains a rhodamine-like fluorophore, making it suitable for use with argon and krypton laser excitation sources. Rhod-2 signal intensity one of the strongest of all the calcium probes. Rhod 2 is especially suitable probe for intracellular calcium monitoring by confocal laser-scanning microscopy and flow cytometry. The dissociation constant of Rhod 2 with calcium is among the highest of all the fluorescent calcium probes, providing a wider range for monitoring calcium concentration. Rhod-2 AM is an acetoxymethyl ester derivative of Rhod-2 that can be easily loaded into cells by passive incubation. Wavelength Maxima: Excitation 549nm, Emission 578nm

Citations: 5

[View Online »](#)

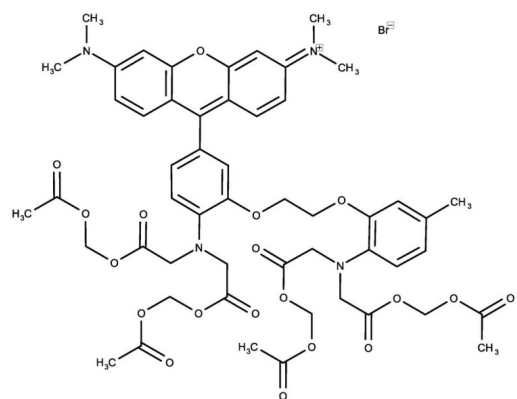
Ordering Information

[Order Online »](#)

ENZ-52010	1mg
-----------	-----

Manuals, SDS & CofA

[View Online »](#)



Handling & Storage

Use/Stability	Stable for at least one year after receipt when stored as recommended.
Handling	Protect from light. Keep cool and dry.
Long Term Storage	-20°C
Shipping	Ambient Temperature

Regulatory Status

RUO - Research Use Only

Product Details

Alternative Name	1-[2-Amino-5-(3-dimethylamino-6-dimethylammonio-9-xanthenyl)phenoxy]-2-(2-amino-5-methylphenoxy)]ethane-N,N,N',N'-tetraacetic acid, tetraacetoxymethyl ester . Br
CAS	145037-81-6
MW	1124.0
Purity	≥90% (HPLC)
Solubility	Soluble in DMSO.

Technical Info / Product Notes

This product is a member of the CELLESTIAL[®] product line, reagents and assay kits comprising fluorescent molecular probes that have been extensively benchmarked for live cell analysis applications. CELLESTIAL[®] reagents and kits are optimal for use in demanding imaging applications, such as confocal microscopy, flow cytometry and HCS, where consistency and reproducibility are required.

Last modified: May 29, 2024



ENZO LIFE SCIENCES,
INC.
Phone: 800.942.0430
info-usa@enzolifesciences.com

European Sales Office
ENZO LIFE SCIENCES
(ELS) AG
Phone: +41 61 926 8989
info-eu@enzolifesciences.com

Belgium, The Netherlands
& Luxembourg
Phone: +32 3 466 0420
info-fr@enzolifesciences.com

France
Phone: +33 472 440 655
info-fr@enzolifesciences.com

Germany
Phone: +49 7621 5500 526
info-de@enzolifesciences.com

UK & Ireland
Phone (UK customers):
0845 601 1488
Phone: +44 1392 825900
info-uk@enzolifesciences.com