

R-Sulforaphane

Carcinogenesis inhibitor

Potent, selective inducer of phase II detoxification enzymes. Inhibits chemically induced mammary tumor formation in rats.

Citations: 22

[View Online »](#)

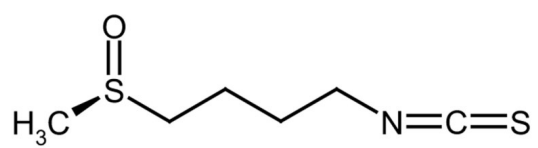
Ordering Information

[Order Online »](#)

| | |
|------------------|------|
| ALX-350-230-M010 | 10mg |
|------------------|------|

Manuals, SDS & CofA

[View Online »](#)



Handling & Storage

Use/Stability As indicated on product label or CoA when stored as recommended.

Long Term Storage -20°C

Shipping Ambient Temperature

Regulatory Status RUO - Research Use Only

Product Details

Alternative Name L-Sulforaphane, (-)-1-Isothiocyanato-(4R)-(methylsulfinyl)butane

Appearance Slightly yellowish liquid. **Please note this product can be very difficult to see and may present as an almost invisible film.

CAS 142825-10-3

Formula $C_6H_{11}NOS_2$

MI 14: 8962

MW 177.3

Purity ≥98% (UHPLC)

Solubility Soluble in methanol, 100% ethanol, DMSO or ethyl acetate.

Source Chiral natural product isolated from broccoli.



ENZO LIFE SCIENCES,
INC.
Phone: 800.942.0430
[info-
usa@enzolifesciences.com](mailto:info-usa@enzolifesciences.com)

European Sales Office
ENZO LIFE SCIENCES
(ELS) AG
Phone: +41 61 926 8989
[info-
eu@enzolifesciences.com](mailto:info-eu@enzolifesciences.com)

Belgium, The Netherlands
& Luxembourg
Phone: +32 3 466 0420
[info-
be@enzolifesciences.com](mailto:info-be@enzolifesciences.com)

France
Phone: +33 472 440 655
[info-
fr@enzolifesciences.com](mailto:info-fr@enzolifesciences.com)

Germany
Phone: +49 7621 5500 526
[info-
de@enzolifesciences.com](mailto:info-de@enzolifesciences.com)

UK & Ireland
Phone (UK customers):
0845 601 1488
Phone: +44 1392 825900
[info-
uk@enzolifesciences.com](mailto:info-uk@enzolifesciences.com)