

R-(-)-Rolipram

PDE inhibitor

R-enantiomer of rolipram which is more active at inhibition of PDE IV, $K_i = 0.06 \mu\text{M}$. 10-fold more active than S-rolipram at inhibition of PDE IV. Inhibits antigen-induced contraction of guinea-pig colonic smooth muscle, $EC_{50} = 0.1 \mu\text{M}$.

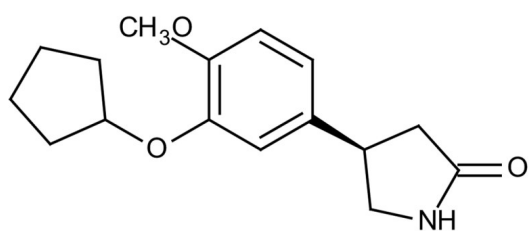
Ordering Information

[Order Online »](#)

BML-PD177-0005	5mg
----------------	-----

Manuals, SDS & CofA

[View Online »](#)



Handling & Storage

Use/Stability As indicated on product label or CoA when stored as recommended.

Long Term Storage Ambient

Shipping Ambient Temperature

Regulatory Status RUO - Research Use Only

Product Details

Alternative Name R-(-)-4-[3-(Cyclopentyloxy)-4-methoxyphenyl]-2-pyrrolidinone

Appearance White to off-white solid.

CAS 85416-75-7

Couple Target PDE

Couple Type Inhibitor

Formula $C_{16}H_{21}NO_3$

Identity Determined by 1H -NMR and MS.

MW 275.4

Purity $\geq 98\%$ (HPLC)

Solubility Soluble in DMSO.



ENZO LIFE SCIENCES,
INC.
Phone: 800.942.0430
[info-
usa@enzolifesciences.com](mailto:info-usa@enzolifesciences.com)

European Sales Office
ENZO LIFE SCIENCES
(ELS) AG
Phone: +41 61 926 8989
[info-
eu@enzolifesciences.com](mailto:info-eu@enzolifesciences.com)

Belgium, The Netherlands
& Luxembourg
Phone: +32 3 466 0420
[info-
fr@enzolifesciences.com](mailto:info-fr@enzolifesciences.com)

France
Phone: +33 472 440 655
[info-
fr@enzolifesciences.com](mailto:info-fr@enzolifesciences.com)

Germany
Phone: +49 7621 5500 526
[info-
de@enzolifesciences.com](mailto:info-de@enzolifesciences.com)

UK & Ireland
Phone (UK customers):
0845 601 1488
Phone: +44 1392 825900
[info-
uk@enzolifesciences.com](mailto:info-uk@enzolifesciences.com)