

[pTyr¹³¹⁶]IGF-1

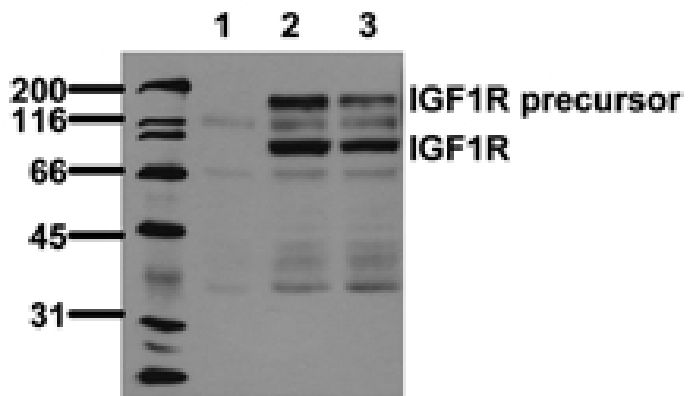
receptor monoclonal antibody (2B9)

Insulin-like growth factor-I (IGF-I) is a polypeptide hormone similar in structure to insulin. It is involved in regulation of neuronal growth and development in the central and peripheral nervous system. IGF-1 is a potent inhibitor of apoptosis in neurons, and activates the Akt signaling pathway via the IGF-1R and Insulin receptors. The IGF-1R acts as a receptor for IGF-1 and the related IGF-2, and is subject to autophosphorylation on multiple tyrosine residues that regulate receptor activation and assembly of signal transduction complexes.

This antibody is covered by our [Worry-Free Guarantee](#).

Manuals, SDS & CofA

[View Online »](#)



Western blot analysis of untreated (1), Insulin-treated (2), or IGF1-treated (3) HeLa cell lysates, probed with IGF1 Receptor (pTyr1316) mAb (2B9).

Handling & Storage

Use/Stability Stable at -80°C up to 1 year, at 4°C up to 3 months.

Long Term Storage -20°C

Shipping Blue Ice

Regulatory Status RUO - Research Use Only

Product Details

Alternative Name Insulin-like growth factor-1 receptor, IGF-1R

Application ELISA, WB

Application Notes Detects a band of ~97kDa by Western blot.

Clone 2B9

Formulation Lyophilized from 1ml of 2x PBS containing 0.09% sodium azide, PEG, and sucrose.

Host Mouse

Immunogen Synthetic peptide corresponding to a portion of human IGF-1 receptor phosphorylated at Tyr1316.

Isotype IgG1

Purity Detail Thiophilic adsorption and size exclusion chromatography purified.

Recommendation Dilutions/Conditions ELISA (0.1µg/ml)Western Blot (1µg/ml, ECL)Suggested dilutions/conditions may not be available for all applications.Optimal conditions must be determined individually for each application.

Reconstitution Reconstitute with 1ml water (15 minutes at room temperature).

Species Reactivity Human

UniProt ID P08069

Last modified: May 29, 2024



ENZO LIFE SCIENCES,
INC.
Phone: 800.942.0430
[info-
usa@enzolifesciences.com](mailto:info-usa@enzolifesciences.com)

European Sales Office
ENZO LIFE SCIENCES
(ELS) AG
Phone: +41 61 926 8989
[info-
eu@enzolifesciences.com](mailto:info-eu@enzolifesciences.com)

Belgium, The Netherlands
& Luxembourg
Phone: +32 3 466 0420
[info-
be@enzolifesciences.com](mailto:info-be@enzolifesciences.com)

France
Phone: +33 472 440 655
[info-
fr@enzolifesciences.com](mailto:info-fr@enzolifesciences.com)

Germany
Phone: +49 7621 5500 526
[info-
de@enzolifesciences.com](mailto:info-de@enzolifesciences.com)

UK & Ireland
Phone (UK customers):
0845 601 1488
Phone: +44 1392 825900
[info-
uk@enzolifesciences.com](mailto:info-uk@enzolifesciences.com)