

[pSer⁴⁵]αB-Crystallin polyclonal antibody

Alpha-crystallins, which are part of the small Heat shock family members, are major water-soluble proteins present in the lens of the mammalian eye. Phosphorylation of serine residues which occurs during development and in response to stress, is intimately linked with its function. Chaperone activity requires, and is modulated by, oligomerization and is limited to binding unfolded intermediates to prevent irreversible aggregation.

This antibody is covered by our [Worry-Free Guarantee](#).

Citations: 5

[View Online »](#)

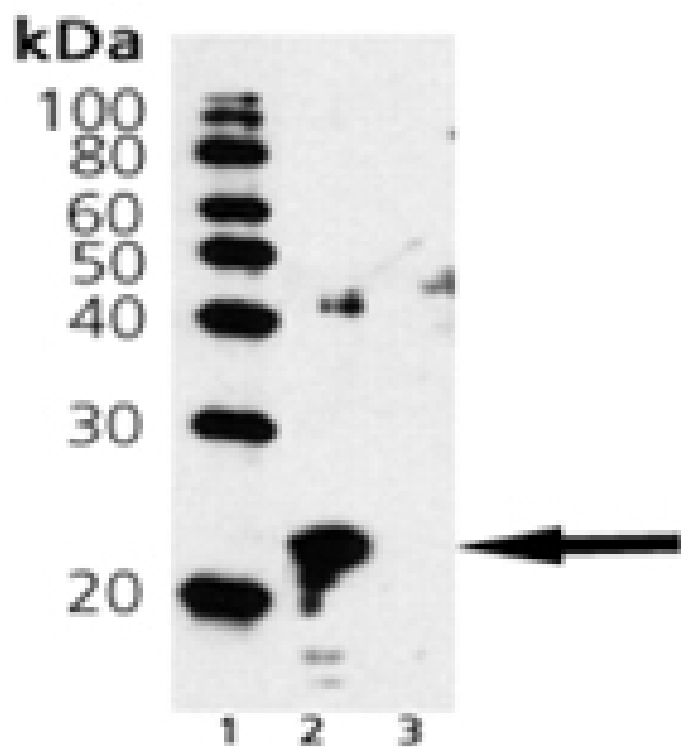
Ordering Information

[Order Online »](#)

ADI-SPA-226-D	50µg
ADI-SPA-226-F	200µg

Manuals, SDS & CofA

[View Online »](#)



Western blot analysis of Crystallin alpha-B (pSer45):
Lane 1: MW marker, Lane 2: alpha-B1 Crystallin Protein (phospho), Lane 3: alpha-B2 Crystallin Protein (non-phospho)

Handling & Storage

Long Term Storage -20°C

Shipping Blue Ice

Regulatory Status RUO - Research Use Only

Product Details

Alternative Name CRYAB, HSPB5

Application IP, WB

Application Notes Detects a band of ~22kDa by Western blot.

Formulation Liquid. In 0.1M sodium phosphate buffer, pH 7.0, containing 1.5% BSA and 0.1% sodium azide.

Host Rabbit

Immunogen Synthetic peptide corresponding to a portion of human α B-crystallin phosphorylated at Ser45.

Purity Detail Affinity purified.

Recommendation Western Blot (1:500, ECL) Suggested dilutions/conditions may not be available for all applications. Optimal conditions must be determined individually for each application.

Source Purified from rabbit serum.

Species Reactivity Bovine, Chicken, Dog, Guinea pig, Hamster, Human, Monkey, Mouse, Porcine, Rabbit, Rat, Scallop, Xenopus

UniProt ID P02511

Worry-free Guarantee This antibody is covered by our [Worry-Free Guarantee](#).



ENZO LIFE SCIENCES,
INC.
Phone: 800.942.0430
[info-
usa@enzolifesciences.com](mailto:info-usa@enzolifesciences.com)

European Sales Office
ENZO LIFE SCIENCES
(ELS) AG
Phone: +41 61 926 8989
[info-
eu@enzolifesciences.com](mailto:info-eu@enzolifesciences.com)

Belgium, The Netherlands
& Luxembourg
Phone: +32 3 466 0420
[info-
be@enzolifesciences.com](mailto:info-be@enzolifesciences.com)

France
Phone: +33 472 440 655
[info-
fr@enzolifesciences.com](mailto:info-fr@enzolifesciences.com)

Germany
Phone: +49 7621 5500 526
[info-
de@enzolifesciences.com](mailto:info-de@enzolifesciences.com)

UK & Ireland
Phone (UK customers):
0845 601 1488
Phone: +44 1392 825900
[info-
uk@enzolifesciences.com](mailto:info-uk@enzolifesciences.com)