

[pSer133]CREB monoclonal antibody (10E9)

The transcription factor CREB (cAMP response element binding) binds the palindromic octanucleotide TGACGTCA. Members of the ATF/CREB family include CREB-1, CREB-2 (also designated ATF-4), ATF-1, ATF-2, and ATF-3. Phosphorylation of CREB allows recruitment of CREB-binding protein (CBP), a large co-activator that contacts the general transcriptional machinery. CREB-mediated transcription regulates diverse cellular responses, including intermediary metabolism, neuronal signaling, cell proliferation, and apoptosis.

This antibody is covered by our [Worry-Free Guarantee](#).

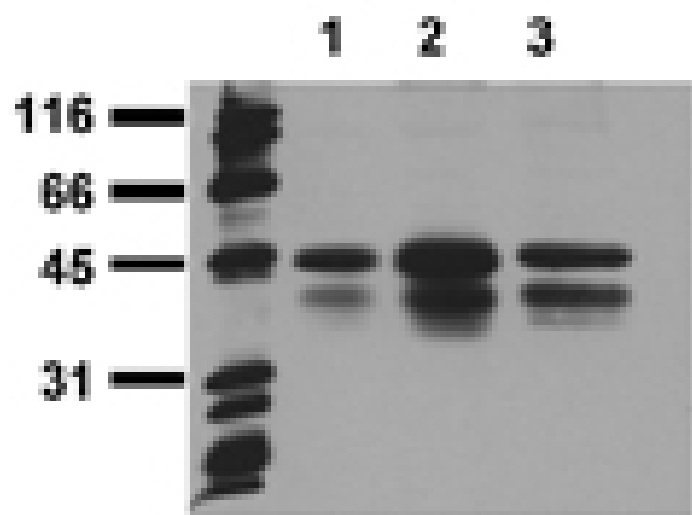
Ordering Information

[Order Online »](#)

ADI-905-639-100	100µg
-----------------	-------

Manuals, SDS & CofA

[View Online »](#)



Western blot analysis of untreated (1), EGF-stimulated (2), or pervanadate-treated (3) A549 cancer cell lysates probed with CREB (pSer133) mAb (10E9).

Handling & Storage

Use/Stability	Stable at -80°C up to 1 year, at 4°C up to 3 months.
Long Term Storage	-20°C
Shipping	Blue Ice

Regulatory Status

RUO - Research Use Only

Product Details

Alternative Name	cAMP responsive element binding protein
Application	ELISA, WB
Application Notes	Detects bands of ~43kDa (CREB) and ~38kDa (ATF1) by Western blot.
Clone	10E9
Formulation	Lyophilized from 1ml of 2x PBS containing 0.09% sodium azide, PEG, and sucrose.
Host	Mouse
Immunogen	Synthetic peptide corresponding to a portion of CREB phosphorylated at Ser133.
Isotype	IgG1
Purity Detail	Thiophilic adsorption and size exclusion chromatography purified.
Recommendation Dilutions/Conditions	ELISA (0.05µg/ml)Western Blot (0.5µg/ml, ECL)Suggested dilutions/conditions may not be available for all applications.Optimal conditions must be determined individually for each application.
Reconstitution	Reconstitute with 1ml water (15 minutes at room temperature).
Species Reactivity	Dog, Human, Mouse

UniProt ID

P16220 (human)

Worry-free Guarantee

This antibody is covered by our [Worry-Free Guarantee](#)

Last modified: May 29, 2024



ENZO LIFE SCIENCES,
INC.
Phone: 800.942.0430
[info-
usa@enzolifesciences.com](mailto:info-usa@enzolifesciences.com)

European Sales Office
ENZO LIFE SCIENCES
(ELS) AG
Phone: +41 61 926 8989
[info-
eu@enzolifesciences.com](mailto:info-eu@enzolifesciences.com)

Belgium, The Netherlands
& Luxembourg
Phone: +32 3 466 0420
[info-
be@enzolifesciences.com](mailto:info-be@enzolifesciences.com)

France
Phone: +33 472 440 655
[info-
fr@enzolifesciences.com](mailto:info-fr@enzolifesciences.com)

Germany
Phone: +49 7621 5500 526
[info-
de@enzolifesciences.com](mailto:info-de@enzolifesciences.com)

UK & Ireland
Phone (UK customers):
0845 601 1488
Phone: +44 1392 825900
[info-
uk@enzolifesciences.com](mailto:info-uk@enzolifesciences.com)