

Protein A ELISA kit (Flexible Protocol)

Most sensitive (9.01 pg/ml) colorimetric ELISA for monitoring residual contamination.

The Protein A ELISA kit (Flexible Protocol) is a colorimetric immunometric enzyme immunoassay kit with results in under 3 hours. This kit features two different sample preparation protocols (with or without boiling), offering users flexibility and adaptability to different sample types and workflows, ensuring accurate and efficient detection of Protein A. Ultra-sensitive quantification (< 1 ppm) of Protein A residuals in purified humanized monoclonal antibody preparations. This kit recognizes four different Protein A constructs.

Staphylococcus aureus Protein A is a 42 kDa cell wall constituent that is characterized by its binding affinity to the Fc portion of some immunoglobulins, especially the IgG class. The IgG binding domain (domain B) consists of three anti-parallel alpha-helices, the third of which is disrupted when the protein is complexed with Fc. Protein A is commonly used to purify antisera and in commonly used immunodetection and visualization techniques. Protein A participates in a number of protective biological functions including anti-tumor, toxic and carcinogenic activities, thus necessitating the removal of potential Protein A contaminants from antibody preparations for therapeutic use.

Ordering Information

[Order Online »](#)

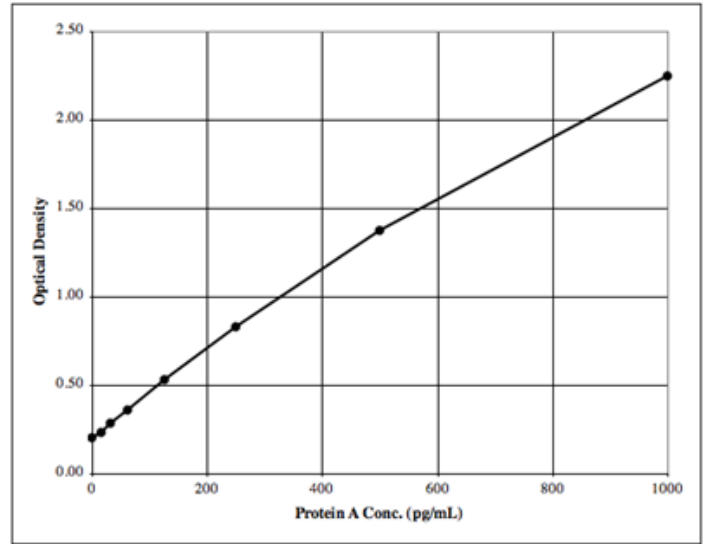
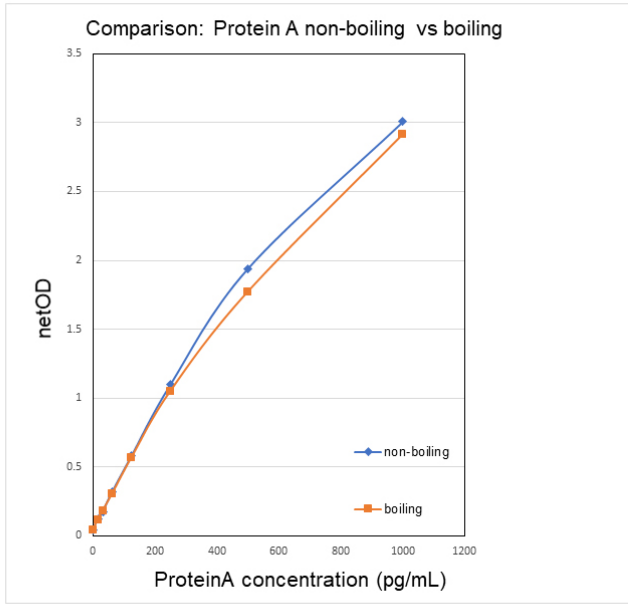
ADI-900-057-FP

96 wells

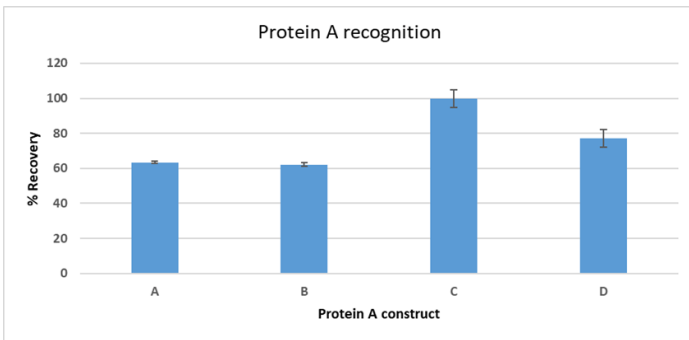
Manuals, SDS & CofA

[View Online »](#)

- Most sensitive (9.01 pg/ml) colorimetric ELISA for monitoring residual contamination now featuring two different sample treatment protocols.
- Flexible sample treatment options, with or without boiling, while maintaining the same high performance specifications.
- Highly sensitive measurement, detecting as little as 9.01 pg/ml (<1 ppm) of Protein A residuals in purified humanized mAb preparations
- Ensures accurate results as it recognizes several constructs of Protein A
- High throughput format with results in < 3 hours for up to 37 samples in duplicate
- Cost-effective solution compared to other technologies, providing a lower cost-per-test
- Useful for contamination analysis and measurement of Protein A variants in monoclonal antibody preparations



Protein A ELISA kit (Flexible Protocol) Standard Curve



Protein A ELISA Kit recognizes natural and recombinant forms of Protein A. Different Protein A constructs, described below, were evaluated (post treatment) in the assay.

Resulting optical densities were interpolated off of the kit standard curve. Percent expected was calculated by dividing observed concentration by expected concentration (A-D: n=6, graphical data represents statistical mean \pm 1 SD).

- A. Natural Protein A from *S. Aureus*
- B. Recombinant Protein A from *E. coli*
- C. Recombinant Cys-Protein A from *E. coli*
- D. Recombinant alkaline-resistant Protein A variant from *E. coli*

Handling & Storage

Long Term Storage +4°C

Shipping Blue Ice

Regulatory Status RUO - Research Use Only

Product Details

Application Colorimetric detection, ELISA

Application Notes For the quantitative determination of residual protein A contamination in protein A purified IgG preparations from any species.

Compatibility This product is compatible with the [Absorbance 96 Plate Reader](#).

Contents Microtiter plate, Conjugate, Antibody, Dissociation buffer, Neutralization buffer, Assay buffer 13, Wash buffer concentrate, Standard, TMB Substrate, Stop solution 2

Sensitivity 9.01 pg/ml (range 15.63 – 1,000 pg/ml)

Species Reactivity Species independent

Technical Info / Product Notes Assay recognition of different Protein A constructs from natural Protein A from *S. aureus* (M), recombinant Protein A from *E. coli* (R), recombinant Cys-Protein A from *E. coli* (G), and recombinant alkaline-resistant Protein A variant from *E. coli* (S) were tested and the resulting concentrations were interpolated from kit standard curve and displayed in the figure provided.

Application Notes:

[Comparison of Assay Methods for the Detection of Residual Protein A in Biological Therapeutics](#)

Wavelength 450 nm



ENZO LIFE SCIENCES,
INC.
Phone: 800.942.0430
info-usa@enzolifesciences.com

European Sales Office
ENZO LIFE SCIENCES
(ELS) AG
Phone: +41 61 926 8989
info-eu@enzolifesciences.com

Belgium, The Netherlands
& Luxembourg
Phone: +32 3 466 0420
info-fr@enzolifesciences.com

France
Phone: +33 472 440 655
info-fr@enzolifesciences.com

Germany
Phone: +49 7621 5500 526
info-de@enzolifesciences.com

UK & Ireland
Phone (UK customers):
0845 601 1488
Phone: +44 1392 825900
info-uk@enzolifesciences.com