

Proteasome purification kit

High integrity kit for purification of proteasome complexes.

This kit provides a gentle and rapid means to purify proteasome complexes from biological samples using an agarose immobilised 20S subunit specific proteasome antibody, without the need for genetic modification of the expressed proteasome. Captured proteasomes are eluted under denaturing conditions prior to analysis by Western blotting or characterisation by proteomic methods.

Citations: 8

[View Online »](#)

Ordering Information

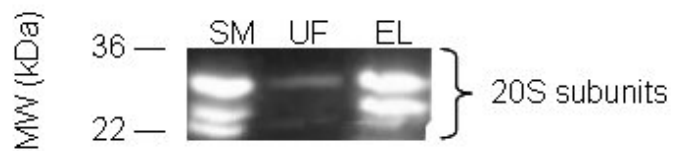
[Order Online »](#)

BML-PW1075A-0001	10 tests
------------------	----------

Manuals, SDS & CofA

[View Online »](#)

- Isolation of wild type proteasome complexes from biological samples (cell lysates, tissue extracts, plasma, serum), confirmed by Western blot analysis.
- Analysis of captured proteasome complex proteins by proteomic methods, for example to determine complex composition and subunit post-translational modification.
- Investigation of variations in proteasome complexes in abnormal cell lines/tissues
- Comparison of proteasome complexes isolated from biological samples associated with a particular disease/illness with samples from healthy controls.



Western blot analysis of proteasome purification from control lysate. Proteasome purification assay was set-up and run as described in manual. The presence of purified proteasome in starting material, unbound fraction and elution fraction was detected by Western blotting as described in kit manual, using the 20S 'core' proteasome antibody provided at a dilution of 1:1000. Key: SM = starting material, UF = unbound fraction and EL = elution fraction.

Handling & Storage

Use/Stability	Upon receipt, the Proteasome Purification Matrix (BML-PW9005) should be stored at 4°C. The Control lysate (BML-SW8750) should be stored at -80°C. Other biochemical components should be stored at -20°C for short term and -80°C for long term.
Handling	Avoid freeze/thaw cycles.
Short Term Storage	-20°C
Long Term Storage	-80°C
Shipping	Dry Ice

Regulatory Status

RUO - Research Use Only

Product Details

Application Notes	For the isolation and enrichment of proteasome complexes.
Contents	Proteasome purification matrix (BML-PW9005-0250) HeLa S100 fraction (Control lysate) (BML-SW8750-0100) Proteasome 20S β 5, pAb (BML-PW8895-0010)
Quantity	Provides sufficient material for 10 binding assays.



ENZO LIFE SCIENCES,
INC.
Phone: 800.942.0430
[info-
usa@enzolifesciences.com](mailto:info-usa@enzolifesciences.com)

European Sales Office
ENZO LIFE SCIENCES
(ELS) AG
Phone: +41 61 926 8989
[info-
eu@enzolifesciences.com](mailto:info-eu@enzolifesciences.com)

Belgium, The Netherlands
& Luxembourg
Phone: +32 3 466 0420
[info-
be@enzolifesciences.com](mailto:info-be@enzolifesciences.com)

France
Phone: +33 472 440 655
[info-
fr@enzolifesciences.com](mailto:info-fr@enzolifesciences.com)

Germany
Phone: +49 7621 5500 526
[info-
de@enzolifesciences.com](mailto:info-de@enzolifesciences.com)

UK & Ireland
Phone (UK customers):
0845 601 1488
Phone: +44 1392 825900
[info-
uk@enzolifesciences.com](mailto:info-uk@enzolifesciences.com)