

Prolactin ELISA Kit

Highly sensitive Prolactin ELISA kit enabling detection of Prolactin in serum and plasma in just 3 hours.

The Prolactin ELISA kit is a colorimetric immunoassay kit with results in 3 hours. Absorbance is read at 450 nm. Measure up to 38 samples in duplicate per 96 well kit.

Prolactin, also known as luteotropic hormone or luteotropin, is best known for its role in enabling mammals (usually female) to produce milk. Specifically, prolactin is the hormone primarily responsible for the synthesis of milk protein, lactose and lipids, all major components of milk. Prolactin is secreted from the pituitary gland in response to eating, mating, estrogen treatment, ovulation and nursing. Prolactin plays an important role in metabolism, regulation of the immune system and pancreatic development. Prolactin and the prolactin receptor are expressed in ovarian and fallopian tube tissues and are involved in physiological ovarian processes, such as follicle development and corpus luteum function, during the menstrual cycle and pregnancy. During pregnancy there is a steady five-to-tenfold rise in plasma prolactin levels and the stimulating action of prolactin on the mammary gland leads to post-partum lactation. This is thought to be the main role for prolactin during pregnancy. Prolactin is 199 amino acids in length and occurs in both glycosylated and non-glycosylated forms. It can be present in three different forms: monomeric or "little" prolactin, dimeric or "big" prolactin and "big-big" prolactin and these forms are 22, 48 and 150kDa in size, respectively. It is influential in over 300 separate processes and, in addition to pregnancy and lactation, has elevated levels during exercise, sleep, stress and depression. Prolactin also plays a role in systemic disorders such as chronic renal failure, cirrhosis, epileptic seizures, polycystic ovarian disease, and herpes zoster, among others.

Ordering Information

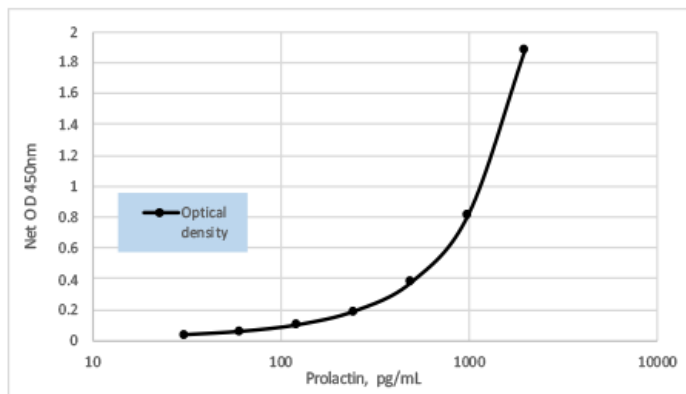
[Order Online »](#)

ENZ-KIT161-0001	96 wells
-----------------	----------

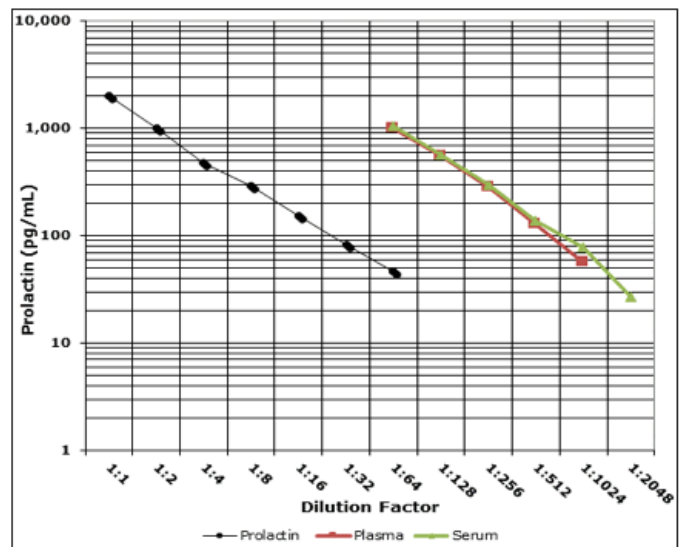
Manuals, SDS & CofA

[View Online »](#)

- High-sensitivity ELISA enables quantification of low amounts of Prolactin
- Rapid quantitative results in 3 hours
- High-throughput immunoassay measures up to 38 samples in duplicate per 96 well kit
- Ready-to-use reagents and pre-coated plates reduce errors and save time



Standard curve for Prolactin ELISA Kit (ENZ-KIT161).



Parallelism graph displaying dilutional linearity for Prolactin ELISA kit (ENZ-KIT161).

Handling & Storage

Use/Stability Store all components at -20°C.

Shipping Blue Ice

Regulatory Status RUO - Research Use Only

Product Details

Alternative Name Luteotropic hormone, Luteotropin

Application Colorimetric detection, ELISA

Application Notes For the quantitative determination of human Prolactin in serum and plasma.

Assay Time 3 hours

Compatibility This product is compatible with the [Absorbance 96 Plate Reader](#).

Contents Prolactin microtiter plate, Assay Buffer, Prolactin Conjugate, Prolactin Antibody, Prolactin Standard, Wash Buffer, TMB Substrate, Stop Solution, Assay Layout Sheet, Plate Sealer

Crossreactivity Negligible crossreactivity to LH, FSH, TSH, HGH, and HCG

Sensitivity 19.2 pg/mL (31.3 – 2000 pg/mL)

Species Reactivity Human

UniProt ID P05231

Wavelength 450 nm

Last modified: May 29, 2024



ENZO LIFE SCIENCES,
INC.
Phone: 800.942.0430
[info-
usa@enzolifesciences.com](mailto:info-usa@enzolifesciences.com)

European Sales Office
ENZO LIFE SCIENCES
(ELS) AG
Phone: +41 61 926 8989
[info-
eu@enzolifesciences.com](mailto:info-be@enzolifesciences.com)

Belgium, The Netherlands
& Luxembourg
Phone: +32 3 466 0420
[info-
be@enzolifesciences.com](mailto:info-fr@enzolifesciences.com)

France
Phone: +33 472 440 655
[info-
fr@enzolifesciences.com](mailto:info-fr@enzolifesciences.com)

Germany
Phone: +49 7621 5500 526
[info-
de@enzolifesciences.com](mailto:info-de@enzolifesciences.com)

UK & Ireland
Phone (UK customers):
0845 601 1488
Phone: +44 1392 825900
[info-
uk@enzolifesciences.com](mailto:info-uk@enzolifesciences.com)