

Prestained Protein Ladder (3.5 – 245 kDa)

Protein ladder for use with protein gel electrophoresis

Enzo's Protein ladder is a three-color protein standard with 13 prestained proteins, covering a wide range molecular weights from 3.5 to 245 kDa. Proteins are covalently coupled with a blue chromophore except for two reference bands (one green and one red band at 25 kDa and 75 kDa respectively) when separated on SDS-PAGE (Tris-glycine buffer).

Our Protein ladder is designed for monitoring protein separation during SDS-polyacrylamide gel electrophoresis, verification of Western transfer efficiency on membranes (PVDF, nylon, or nitrocellulose) and for approximating the size of proteins. The ladder is supplied in gel loading buffer and is ready to use. Do not heat, dilute or add reducing agent before loading.

Ordering Information

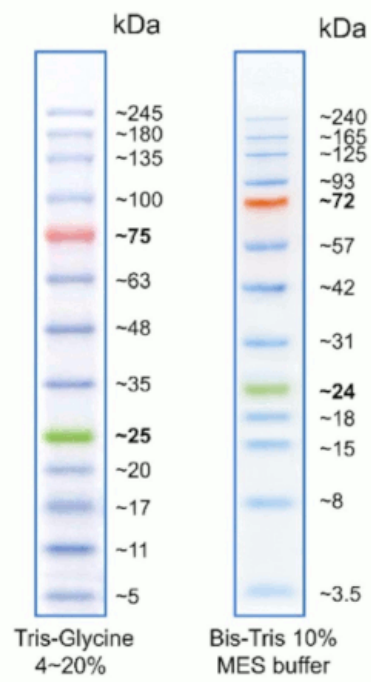
[Order Online »](#)

ENZ-ACC131-0500	500µl
-----------------	-------

Manuals, SDS & CofA

[View Online »](#)

- 3 µL or 5 µL per loading for clear visualization during electrophoresis on 15-well or 10-well mini-gel, respectively.
- Three color protein standard with 13 prestained proteins.
- Apply more for thicker (>1.5 mm) or larger gel.



Guide for Molecular Weight Estimation (kDa): Migration patterns of Prestained Protein Ladder in different electrophoresis conditions.

Handling & Storage

Use/Stability	As indicated on product label or CoA when stored as recommended. Store at 4°C for 3 months. Store at -20°C for 24 months.
Short Term Storage	+4°C
Long Term Storage	-20°C
Shipping	Blue Ice

Regulatory Status

RUO - Research Use Only

Product Details

Formulation	Approximately 0.1~0.4 mg/ml of each protein in the buffer (20mM Tris-phosphate, pH 7.5 at 25°C), 2% SDS, 0.2mM Dithiothreitol, 3.6 M Urea, and 15% (v/v) Glycerol).
-------------	---

Last modified: May 29, 2024



ENZO LIFE SCIENCES,
INC.
Phone: 800.942.0430
[info-
usa@enzolifesciences.com](mailto:info-usa@enzolifesciences.com)

European Sales Office
ENZO LIFE SCIENCES
(ELS) AG
Phone: +41 61 926 8989
[info-
eu@enzolifesciences.com](mailto:info-eu@enzolifesciences.com)

Belgium, The Netherlands
& Luxembourg
Phone: +32 3 466 0420
[info-
be@enzolifesciences.com](mailto:info-be@enzolifesciences.com)

France
Phone: +33 472 440 655
[info-
fr@enzolifesciences.com](mailto:info-fr@enzolifesciences.com)

Germany
Phone: +49 7621 5500 526
[info-
de@enzolifesciences.com](mailto:info-de@enzolifesciences.com)

UK & Ireland
Phone (UK customers):
0845 601 1488
Phone: +44 1392 825900
[info-
uk@enzolifesciences.com](mailto:info-uk@enzolifesciences.com)