

# POLYVIEW® (mouse on mouse-HRP) IHC kit

## High sensitivity, low background nanopolymer detection reagent for use with

**HIGHDEF® chromogens.**  
The POLYVIEW® (mouse on mouse-HRP) IHC kit is a non-biotin detection system suitable for using mouse antibodies to detect antigens on mouse tissue sections. The detection system may be used with formalin-fixed paraffin embedded and cryostat sections, as well as blood smears, cytosmears, and cell preparations.

### Ordering Information

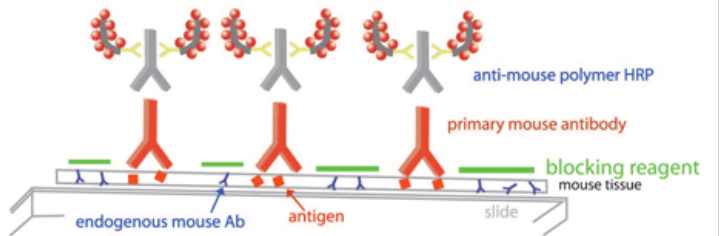
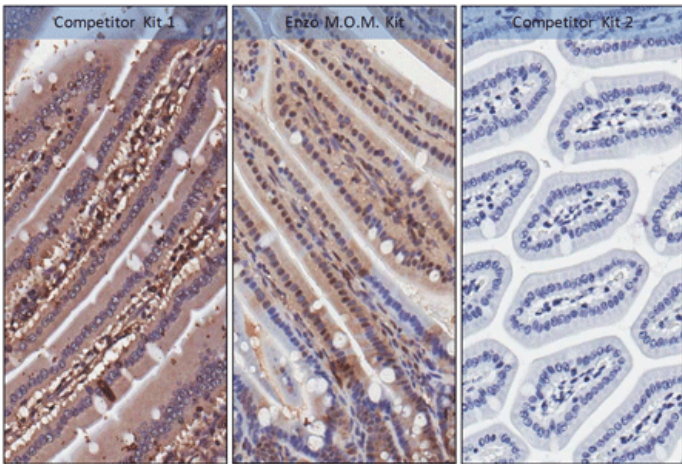
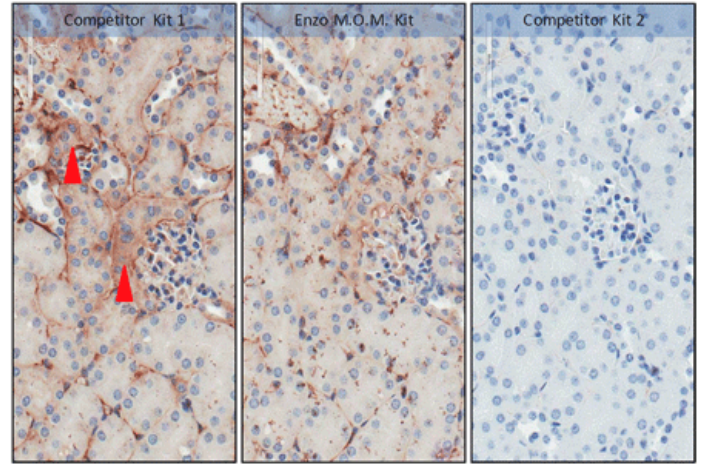
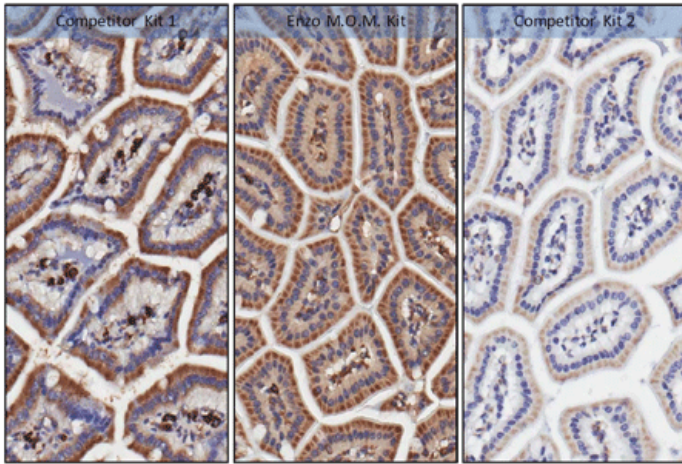
[Order Online »](#)

ADI-950-114-0100	100 tests
------------------	-----------

### Manuals, SDS & CofA

[View Online »](#)

- Enables detection of antigens in mouse tissue using mouse primary antibodies
- Biotin-free nanopolymer detection circumvents endogenous biotin background
- High intensity color development delivers sharp, crisp staining
- Customize with HIGHDEF® chromogens of your choice (sold separately)



## Handling & Storage

Long Term Storage +4°C

Shipping Blue Ice

## Regulatory Status RUO - Research Use Only

## Product Details

Application IHC

Assay Time ~2 hours

Contents IHC tissue primer, Blocking reagent, Anti-Mouse HRP Polymer, DAB Buffer, DAB Chromogen, Empty mixing bottle for DAB

### Technical Info / Product Notes

The POLYVIEW<sup>®</sup> IHC kit has been developed by directly labeling anti-mouse immunoglobulins with enzymes using a proprietary tandem hyperlabelling technology. This ensures consistent and reproducible immunodetection of mouse antibodies against nuclear, cytoplasmic and membrane antigens in different types of tissues. The single step system enables faster staining procedures than traditional two-step methods using biotin and avidin/streptavidin conjugates, with significantly lower background. The POLYVIEW<sup>®</sup> (mouse on mouse-HRP) IHC kit is suitable for use with mouse IgG and IgM antibodies, both monoclonal and polyclonal. The reagents can be used for manual staining or with automated staining instruments and are well suited for multiplex immunohistochemical staining assays.

### Application Note:

[Using Mouse-on-Mouse IHC Kits In Various Sample Types](#)

Last modified: May 29, 2024



ENZO LIFE SCIENCES,  
INC.  
Phone: 800.942.0430  
[info-  
usa@enzolifesciences.com](mailto:info-usa@enzolifesciences.com)

European Sales Office  
ENZO LIFE SCIENCES  
(ELS) AG  
Phone: +41 61 926 8989  
[info-  
eu@enzolifesciences.com](mailto:info-be@enzolifesciences.com)

Belgium, The Netherlands  
& Luxembourg  
Phone: +32 3 466 0420  
[info-  
be@enzolifesciences.com](mailto:info-fr@enzolifesciences.com)

France  
Phone: +33 472 440 655  
[info-  
fr@enzolifesciences.com](mailto:info-fr@enzolifesciences.com)

Germany  
Phone: +49 7621 5500 526  
[info-  
de@enzolifesciences.com](mailto:info-de@enzolifesciences.com)

UK & Ireland  
Phone (UK customers):  
0845 601 1488  
Phone: +44 1392 825900  
[info-  
uk@enzolifesciences.com](mailto:info-uk@enzolifesciences.com)