

# Polyubiquitin (K63-linkage-specific) monoclonal antibody (HWA4C4) (HRP conjugate)

Modification of proteins by addition of K<sup>63</sup>-linked polyubiquitin chains is implicated in a variety of cellular events, including DNA repair, signal transduction and receptor endocytosis.

This antibody is covered by our [Worry-Free Guarantee](#).

Citations: 6

[View Online »](#)

## Ordering Information

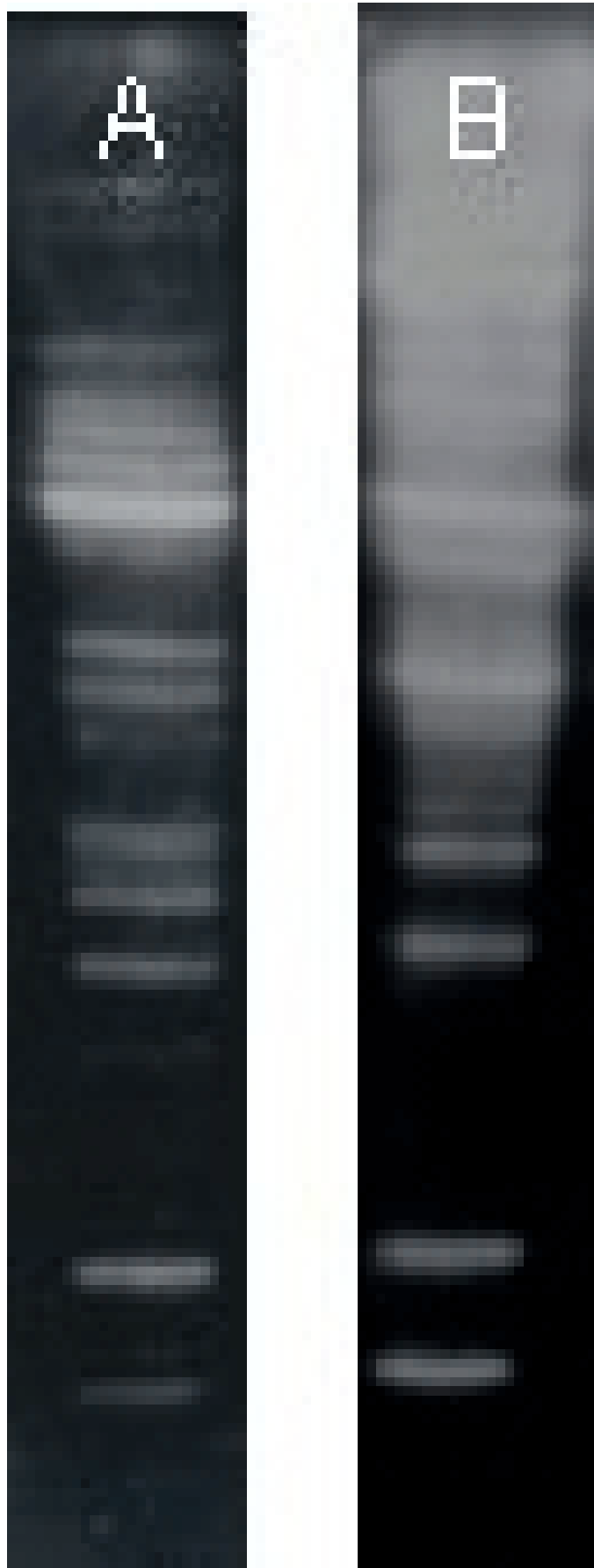
[Order Online »](#)

BML-PW0605-0025	25µg
BML-PW0605-0100	100µg

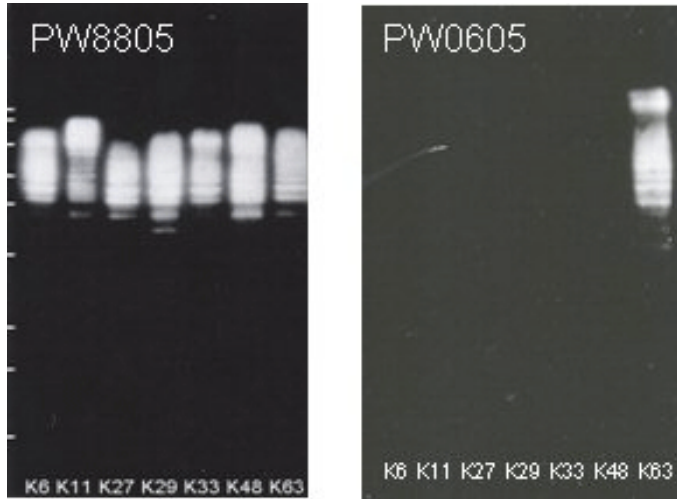
## Manuals, SDS & CofA

[View Online »](#)





**Figure 2:** Western blot of HeLa S100 cytosolic fraction (Prod. No. [BML-SW8750](#), 5µg) probed with K<sup>63</sup>-linkage specific HRP-conjugate and general ubiquitin conjugate-reactive monoclonal antibodies at 1:1'000 dilution. Lane A. MAb to Polyubiquitin (K<sup>63</sup>-linkage-specific) (HWA4C4) (HRP) (Prod. No. BML-PW0605). Lane B. MAb to Mono- and Polyubiquitinated Conjugates (FK2H) (HRP) (Prod. No. BML-PW0150)."



**Figure 1:** Western blot of single isopeptide-linkage polyubiquitinated conjugates (K<sup>6</sup> – Prod. No. [BML-UW0615](#), K<sup>11</sup> – Prod. No. BML-UW0620

## Handling & Storage

Handling	Avoid freeze/thaw cycles.
Short Term Storage	+4°C
Long Term Storage	-20°C
Shipping	Blue Ice

## Regulatory Status

RUO - Research Use Only

## Product Details

Application	WB
Application Notes	K <sup>63</sup> -linked polyubiquitin modified proteins comprise only a proportion of total cellular polyubiquitinated species. Increased sample loading may therefore be required for analysis by Western blotting compared to equivalent experiments using general ubiquitin antibodies, despite the enhanced detection capability of the HWA4C4 HRP conjugated antibody.
Clone	HWA4C4
Crossreactivity	Does not cross-react with any other isopeptide-linked (K6, K11, K27, K29, K33, or K48) polyubiquitinated species or free ubiquitin.
Formulation	Liquid. In 1X PBS, pH 7.2.
Host	Mouse
Immunogen	Synthetic peptide containing the ubiquitin K63-isopeptide motif.
Isotype	IgG2a
Purity Detail	Protein G-affinity purified.

**Recommendation Dilutions/Conditions**

Western Blot (1:1,000) Specificity for K63-isopeptide-linked polyubiquitin conjugates is temperature sensitive. Western blot membranes MUST NOT be autoclaved and excessive heat should be avoided. Suggested dilutions/conditions may not be available for all applications. Optimal conditions must be determined individually for each application.

**Source**

Purified from hybridoma tissue culture supernatant.

**Species Reactivity**

Species independent

**Specificity**

Recognizes K<sup>63</sup>-linked polyubiquitin in wide range of species.

**UniProt ID**

P0CG47 (UBB), P0CG48 (UBC)

**Worry-free Guarantee**

This antibody is covered by our [Worry-Free Guarantee](#).

Last modified: May 29, 2024



ENZO LIFE SCIENCES,  
INC.  
Phone: 800.942.0430  
[info-  
usa@enzolifesciences.com](mailto:info-usa@enzolifesciences.com)

European Sales Office  
ENZO LIFE SCIENCES  
(ELS) AG  
Phone: +41 61 926 8989  
[info-  
eu@enzolifesciences.com](mailto:info-eu@enzolifesciences.com)

Belgium, The Netherlands  
& Luxembourg  
Phone: +32 3 466 0420  
[info-  
be@enzolifesciences.com](mailto:info-be@enzolifesciences.com)

France  
Phone: +33 472 440 655  
[info-  
fr@enzolifesciences.com](mailto:info-fr@enzolifesciences.com)

Germany  
Phone: +49 7621 5500 526  
[info-  
de@enzolifesciences.com](mailto:info-de@enzolifesciences.com)

UK & Ireland  
Phone (UK customers):  
0845 601 1488  
Phone: +44 1392 825900  
[info-  
uk@enzolifesciences.com](mailto:info-uk@enzolifesciences.com)