

# Podophyllotoxin

## Topoisomerase inhibitor

Potent inhibitor of microtubule assembly. Antineoplastic glucoside. Antitumor agent. DNA topoisomerase II inhibitor.

Citations: 6

[View Online »](#)

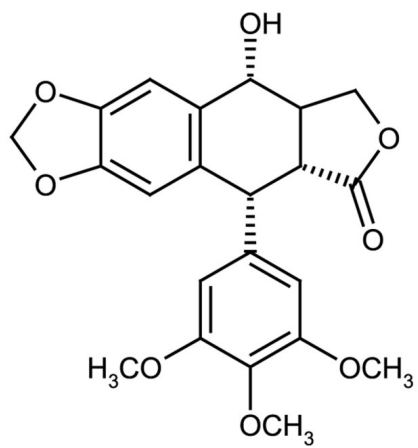
## Ordering Information

[Order Online »](#)

ALX-630-086-M100	100mg
------------------	-------

## Manuals, SDS & CofA

[View Online »](#)



## Handling & Storage

Use/Stability	As indicated on product label or CoA when stored as recommended.
Handling	Very hygroscopic. Protect from moisture. Keep under inert gas.
Long Term Storage	+4°C
Shipping	Ambient Temperature

**Regulatory Status** RUO - Research Use Only

## Product Details

Appearance	White to off-white solid.
CAS	518-28-5
Couple Target	Topoisomerase
Couple Type	Inhibitor
Formula	$C_{22}H_{22}O_8$
Identity	Determined by 1H-NMR and LC-MS.
MI	<b>14:</b> 7546
MW	414.4
Purity	≥98% (HPLC)
RTECS	LV2500000
Solubility	Soluble in chloroform, 100 % ethanol, acetone or dichloromethane; insoluble in water.
Source	Isolated from <i>Podophyllum peltatum</i> .