

PKG polyclonal antibody

Cyclic GMP-dependent protein kinases (PKGs or cGKs) are classified into two types, PKGI and PKGII. Studies have shown that PKGs are highly homologous to PKAs; phosphorylation of cellular proteins by both families of kinases leads to alterations in calcium mobilization, protein phosphatase activity, ion channel function, gene transcription, smooth muscle contractility, and platelet aggregation.

This antibody is covered by our [Worry-Free Guarantee](#).

Citations: 40

[View Online »](#)

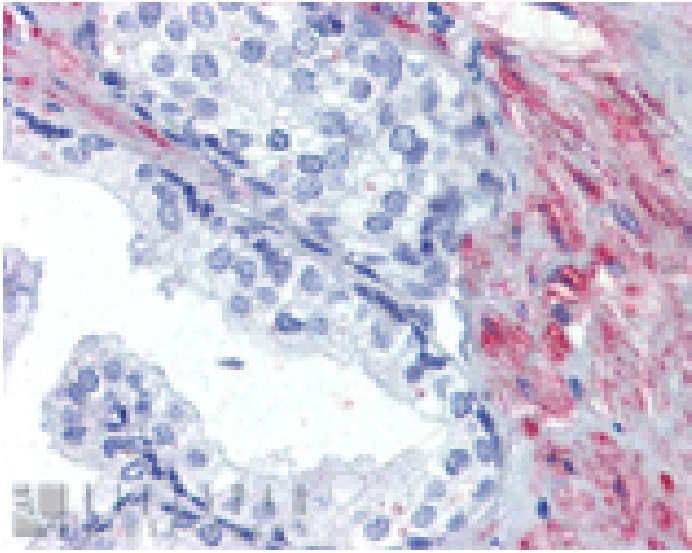
Ordering Information

[Order Online »](#)

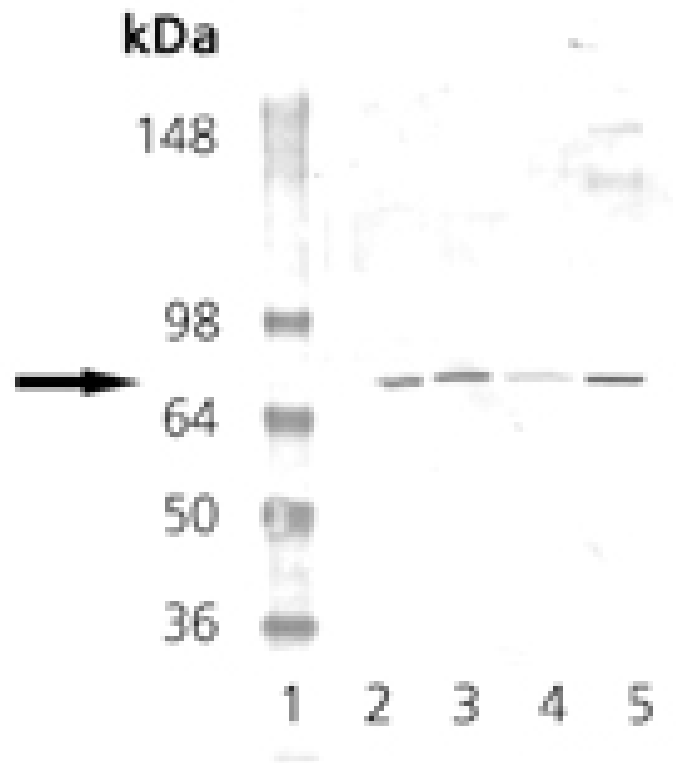
ADI-KAP-PK005-D	50µg
ADI-KAP-PK005-F	200µg

Manuals, SDS & CofA

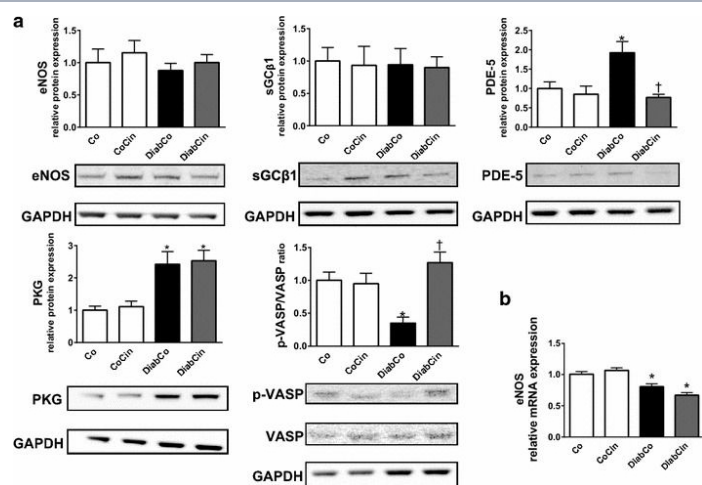
[View Online »](#)



Immunohistochemistry analysis of human prostate tissue stained with PKG, pAb at 10µg/ml.



Western blot analysis: Lane 1: MW marker, Lane 2: Mouse Brain Tissue Extract, Lane 3: Rat Brain Tissue Extract, Lane 4: EKS4 Cell Lysate; Lane 5: HS67 Cell Lysate probed with PKG pAb.



The effect of diabetes mellitus and cinaciguat on myocardial NO-sGC-cGMP-PKG signalling. a Relative protein expression and representative immunoblot bands of endothelial nitric oxide synthase (eNOS), soluble guanylate cyclase β1 (sGC β1), phosphodiesterase 5A (PDE-5) (P value of diabetes × treatment interaction in the two-factorial ANOVA, Pinteraction = 0.024), protein kinase G (PKG), vasodilator-stimulated phosphoprotein (VASP) to phospho-VASP (p-VASP) ratio (Pinteraction = 0.003). b Relative gene expression of eNOS (Pinteraction = 0.039). Groups: vehicle-treated control (Co), cinaciguat-treated control (CoCin), vehicle-treated diabetic (DiabCo) and cinaciguat-treated diabetic (DiabCin). Bar graphs represent mean ± SEM of 5–6 experiments per group. *P < 0.05 vs. Co, †P < 0.05 vs. DiabCo (Tukey HSD test)

Image collected and cropped by CiteAb under a CC-BY license from the following publication: The soluble guanylate cyclase activator cinaciguat prevents cardiac dysfunction in a rat model of type-1 diabetes mellitus. *Cardiovasc Diabetol* (2015)

Handling & Storage

Long Term Storage -20°C

Shipping Blue Ice

Regulatory Status

RUO - Research Use Only

Product Details

Alternative Name	Protein kinase G
Application	IHC (PS), WB
Application Notes	Detects a band of ~75kDa by Western blot.
Formulation	Liquid. In PBS, pH 7.2, containing 50% glycerol and 0.09% sodium azide.
GenBank ID	D45864
Host	Rabbit
Immunogen	Synthetic peptide corresponding to a portion of human PKG.
Purity Detail	Protein A affinity purified.
Recommendation Dilutions/Conditions	Western Blot (1:1,000, colorimetric)Suggested dilutions/conditions may not be available for all applications.Optimal conditions must be determined individually for each application.
Source	Purified from rabbit serum.
Species Reactivity	Human, Mouse, Porcine, Rat
UniProt ID	Q13976
Worry-free Guarantee	This antibody is covered by our Worry-Free Guarantee .



ENZO LIFE SCIENCES,
INC.
Phone: 800.942.0430
[info-
usa@enzolifesciences.com](mailto:info-usa@enzolifesciences.com)

European Sales Office
ENZO LIFE SCIENCES
(ELS) AG
Phone: +41 61 926 8989
[info-
eu@enzolifesciences.com](mailto:info-eu@enzolifesciences.com)

Belgium, The Netherlands
& Luxembourg
Phone: +32 3 466 0420
[info-
be@enzolifesciences.com](mailto:info-be@enzolifesciences.com)

France
Phone: +33 472 440 655
[info-
fr@enzolifesciences.com](mailto:info-fr@enzolifesciences.com)

Germany
Phone: +49 7621 5500 526
[info-
de@enzolifesciences.com](mailto:info-de@enzolifesciences.com)

UK & Ireland
Phone (UK customers):
0845 601 1488
Phone: +44 1392 825900
[info-
uk@enzolifesciences.com](mailto:info-uk@enzolifesciences.com)