

# PKC $\alpha$ monoclonal antibody (MC5)

Protein Kinase C (PKC) is a large superfamily of serine/threonine kinases that mediate essential cellular signals required for activation, proliferation, differentiation and survival. There are at least ten PKC isotypes that are closely related in structure but that have distinct patterns of tissue distribution and function. The PKC isotypes can be subdivided into three classes based on primary structure and biochemical properties. These are: classical or conventional PKC isotypes (cPKC), novel PKC isotypes (nPKC) and atypical PKC isotypes (aPKC).

This antibody is covered by our [Worry-Free Guarantee](#).

Citations: 1

[View Online »](#)

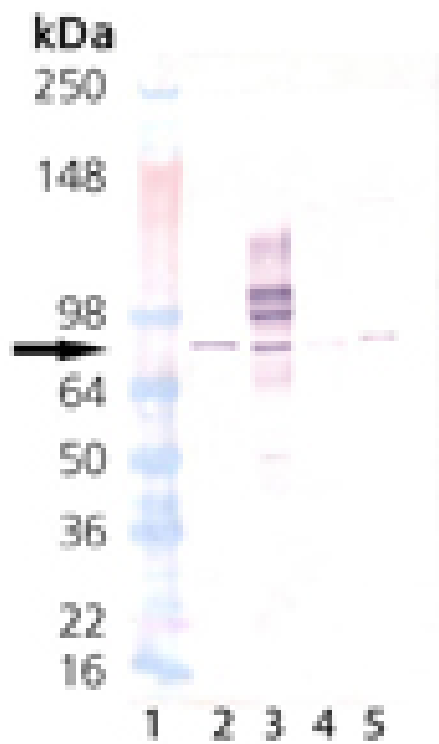
## Ordering Information

[Order Online »](#)

ADI-KAM-PK020-D	50 $\mu$ g
ADI-KAM-PK020-F	200 $\mu$ g

## Manuals, SDS & CofA

[View Online »](#)



Western blot analysis: Lane 1 : MW marker, Lane 2: HeLa cell lysate, Lane 3: mouse brain tissue extract, Lane 4: rat brain tissue extract, Lane 5: 3T3 cell lysate, probed with PKC $\alpha$ , mAb (MC5).

<b>Handling</b>	Avoid freeze/thaw cycles.
<b>Long Term Storage</b>	-20°C
<b>Shipping</b>	Blue Ice

## Product Details

Alternative Name	Protein kinase Cα
Application	Flow Cytometry, IF, IHC, IP, WB
Application Notes	Detects a band of ~80kDa by Western blot.
Clone	MC5
Formulation	Liquid. In PBS, pH 7.2, containing 50% glycerol and 0.09% sodium azide.
Host	Mouse
Immunogen	Bovine brain PKCα.
Isotype	IgG2a
Purity Detail	Protein G affinity purified.
Recommendation Dilutions/Conditions	Flow Cytometry (10µg/ml)Immunohistochemistry (1:50, human lung, carcinoma tissue)Immunoprecipitation (12.5µg/ml)Western Blot (1:1,000)Suggested dilutions/conditions may not be available for all applications.Optimal conditions must be determined individually for each application.
Source	Purified from mouse ascites.
Species Reactivity	Bovine, Dog, Fish, Gerbil, Human, Monkey, Mouse, Porcine, Rabbit, Rat, Sheep
UniProt ID	P04409

Worry-free Guarantee

This antibody is covered by our [Worry-Free Guarantee](#)

Last modified: May 29, 2024



ENZO LIFE SCIENCES,  
INC.  
Phone: 800.942.0430  
[info-usa@enzolifesciences.com](mailto:info-usa@enzolifesciences.com)

European Sales Office  
ENZO LIFE SCIENCES  
(ELS) AG  
Phone: +41 61 926 8989  
[info-eu@enzolifesciences.com](mailto:info-eu@enzolifesciences.com)

Belgium, The Netherlands  
& Luxembourg  
Phone: +32 3 466 0420  
[info-be@enzolifesciences.com](mailto:info-be@enzolifesciences.com)

France  
Phone: +33 472 440 655  
[info-fr@enzolifesciences.com](mailto:info-fr@enzolifesciences.com)

Germany  
Phone: +49 7621 5500 526  
[info-de@enzolifesciences.com](mailto:info-de@enzolifesciences.com)

UK & Ireland  
Phone (UK customers):  
0845 601 1488  
Phone: +44 1392 825900  
[info-uk@enzolifesciences.com](mailto:info-uk@enzolifesciences.com)