

# PKA (CT) polyclonal antibody

PKA (Protein Kinase A), also known as cAMP-dependent protein kinase, phosphorylates serine or threonine residues in target protein in response to elevated levels of cAMP. Inactive PKA exists as a tetrameric protein composed of two regulatory (R) subunits and two catalytic (C) subunits. Activation occurs when two cAMP molecules bind to each R subunit which causes a conformational change that releases the active C subunits.

This antibody is covered by our [Worry-Free Guarantee](#).

Citations: 4

[View Online »](#)

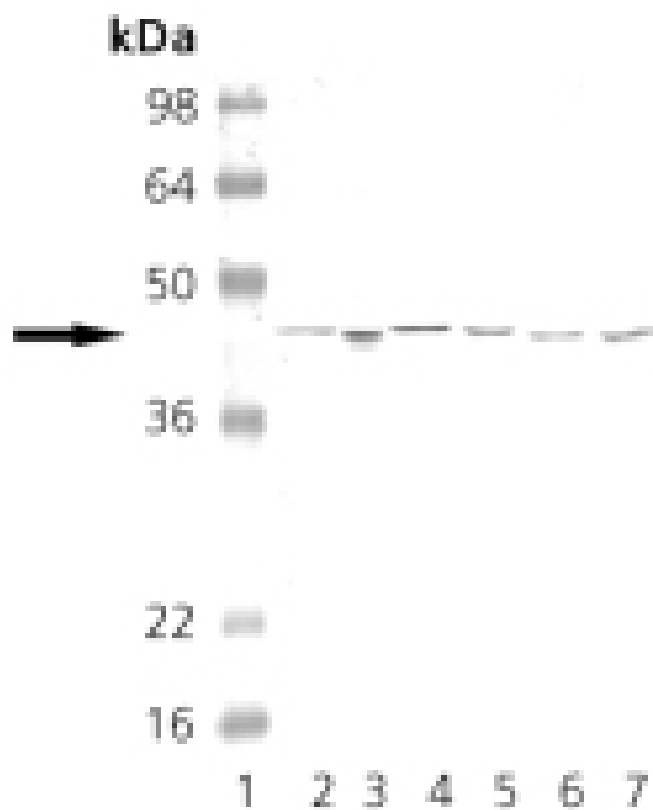
## Ordering Information

[Order Online »](#)

ADI-KAS-PK017-D	50µg
ADI-KAS-PK017-F	200µg

## Manuals, SDS & CofA

[View Online »](#)



Western blot analysis of PKA: Lane 1: MW marker, Lane 2: CHO-K1, Lane 3: Mouse Brain, Lane 4: Rat Brain, Lane 5: HeLa, Lane 6: 3T3, Lane 7: PC-12.

## Handling & Storage

**Handling** Avoid freeze/thaw cycles.

**Long Term Storage** -20°C

**Shipping** Blue Ice

**Regulatory Status** RUO - Research Use Only

## Product Details

**Alternative Name** Protein Kinase A

**Application** WB

**Application Notes** Detects a band of ~40kDa by Western blot.

**Formulation** Liquid. In PBS containing 50% glycerol and 0.09% sodium azide.

**Host** Rabbit

**Immunogen** Synthetic peptide corresponding to a portion of human PKA.

**Purity Detail** Protein A affinity purified.

**Recommendation** Western Blot (1:1,000, colorimetric) Suggested dilutions/conditions may not be available  
**Dilutions/Conditions** for all applications. Optimal conditions must be determined individually for each application.

**Source** Purified from rabbit serum.

**Species Reactivity** Bovine, Dog, Guinea pig, Hamster, Human, Monkey, Mouse, Porcine, Rabbit, Rat, Sheep, Xenopus

**UniProt ID** P17612 (Cα subunit), P22694 (Cβ subunit), P22162 (Cγ subunit), P10644 (RIα subunit), P31321 (RIβ subunit), P13861 (RIIα subunit), P31323 (RIIβ subunit)

**Worry-free Guarantee** This antibody is covered by our [Worry-Free Guarantee](#).



ENZO LIFE SCIENCES,  
INC.  
Phone: 800.942.0430  
[info-  
usa@enzolifesciences.com](mailto:info-usa@enzolifesciences.com)

European Sales Office  
ENZO LIFE SCIENCES  
(ELS) AG  
Phone: +41 61 926 8989  
[info-  
eu@enzolifesciences.com](mailto:info-eu@enzolifesciences.com)

Belgium, The Netherlands  
& Luxembourg  
Phone: +32 3 466 0420  
[info-  
be@enzolifesciences.com](mailto:info-be@enzolifesciences.com)

France  
Phone: +33 472 440 655  
[info-  
fr@enzolifesciences.com](mailto:info-fr@enzolifesciences.com)

Germany  
Phone: +49 7621 5500 526  
[info-  
de@enzolifesciences.com](mailto:info-de@enzolifesciences.com)

UK & Ireland  
Phone (UK customers):  
0845 601 1488  
Phone: +44 1392 825900  
[info-  
uk@enzolifesciences.com](mailto:info-uk@enzolifesciences.com)