

# PINK1 polyclonal antibody

The anti-PINK1 antibody is a highly specific and sensitive tool for detecting human PINK1 in tissue and cell samples, optimized for immunohistochemistry (IHC) and immunofluorescence (IF) applications to study mitochondrial quality control and neurodegenerative pathways.

PINK1 is a mitochondrial kinase essential for maintaining mitochondrial quality control and promoting cell survival under stress conditions. It plays a critical role in protecting neurons from oxidative stress-induced cell death by maintaining mitochondrial integrity. Deficiency in PINK1 leads to mitochondrial dysfunction, elevated oxidative stress, and subsequent neuronal degeneration.

This antibody is covered by our [Worry-Free Guarantee](#).

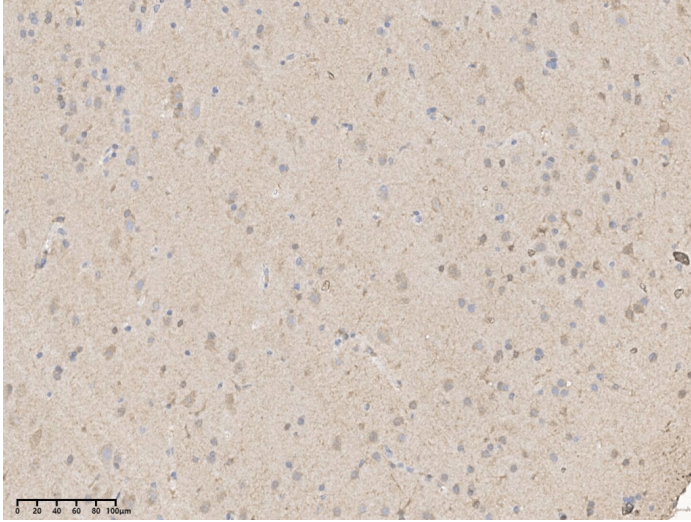
## Ordering Information

[Order Online »](#)

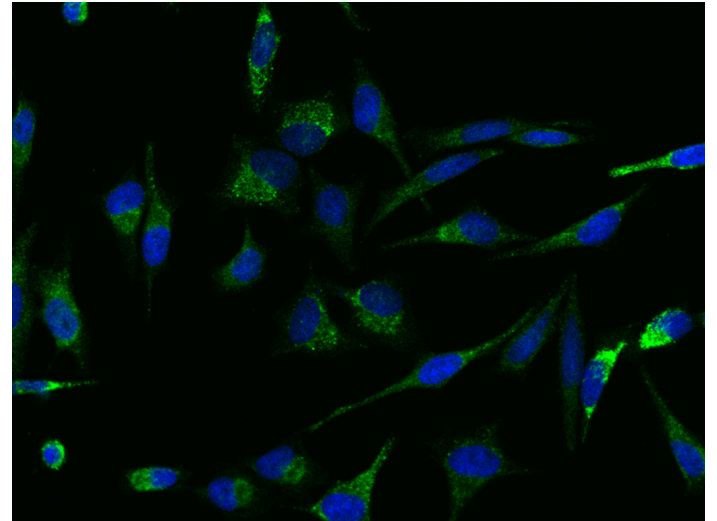
ENZ-ABS1056-0100	100µl
------------------	-------

## Manuals, SDS & CofA

[View Online »](#)



Immunohistochemical staining of human PINK1 in human brain with rabbit polyclonal antibody at 1:100 dilution, formalin-fixed paraffin embedded sections.



Immunofluorescence staining of PINK1-FP10086 in HeLa cells. Cells were fixed with 4% PFA, permeabilized with 0.3% Triton X-100 in PBS, blocked with 10% serum, and incubated with rabbit anti-Human PINK1-FP10086 polyclonal antibody (dilution ratio 1:100) at 4°C overnight. Then cells were stained with the Alexa Fluor®488-conjugated Goat Anti-rabbit IgG secondary antibody (green) and counterstained with DAPI (blue). Positive staining was localized to cytoplasm.

## Handling & Storage

**Handling** Avoid freeze-thaw cycles.

**Long Term Storage** -20°C

**Shipping** Blue Ice

**Regulatory Status** RUO - Research Use Only

## Product Details

**Alternative Name** PTEN induced putative kinase 1

**Application** ICC, IF, IHC (PS)

**Formulation** Liquid. 0.2 µm filtered solution in PBS. Carrier-free. Preservative-free.

**Host** Rabbit

**Immunogen** E. coli-derived Human PINK1 fragment.

**Isotype** IgG

**Purity Detail** Protein A and antigen affinity purified.

**Recommendation** Immunohistochemistry (paraffin sections) (1:50-1:200)

**Dilutions/Conditions** Immunocytochemistry/Immunofluorescence (1:50-1:200)

Suggested dilutions/conditions may not be available for all applications.

Optimal conditions must be determined individually for each application.

**Species Reactivity** Human

**Worry-free Guarantee** This antibody is covered by our [Worry-Free Guarantee](#).



ENZO LIFE SCIENCES,  
INC.  
Phone: 800.942.0430  
[info-  
usa@enzolifesciences.com](mailto:info-usa@enzolifesciences.com)

European Sales Office  
ENZO LIFE SCIENCES  
(ELS) AG  
Phone: +41 61 926 8989  
[info-  
eu@enzolifesciences.com](mailto:info-eu@enzolifesciences.com)

Belgium, The Netherlands  
& Luxembourg  
Phone: +32 3 466 0420  
[info-  
be@enzolifesciences.com](mailto:info-be@enzolifesciences.com)

France  
Phone: +33 472 440 655  
[info-  
fr@enzolifesciences.com](mailto:info-fr@enzolifesciences.com)

Germany  
Phone: +49 7621 5500 526  
[info-  
de@enzolifesciences.com](mailto:info-de@enzolifesciences.com)

UK & Ireland  
Phone (UK customers):  
0845 601 1488  
Phone: +44 1392 825900  
[info-  
uk@enzolifesciences.com](mailto:info-uk@enzolifesciences.com)