

Phosphotyrosine detection set

This kit offers a set of seven different MABs specific for tyrosine phosphorylation sites. Phosphorylation patterns in a given cell extract may differ when probed with different antibodies due to sequence specificity. Recognition therefore depends on two criteria: Phosphorylation and surrounding aa motif. If one of the two criteria is not fulfilled, the antibody will not detect the phosphorylation site. Specificity has been determined by epitope mapping using degenerated phosphopeptide libraries.

Antibodies directed against phosphorylated epitopes recognize the phosphorylated amino acid in the context of the surrounding amino acid sequence. Recognition is therefore dependent on 2 criteria: 1) phosphorylation and 2) the surrounding amino acid motif. If one of the two criteria is not fulfilled, the antibody will not detect the phosphorylation site. Since the amino acid sequence varies between different phosphorylation sites, certain proteins - though phosphorylated - may not be detected by the antibody. Phosphorylation patterns in a given cell extract may differ when probed with different antibodies due to sequence specificity.

Ordering Information

[Order Online »](#)

ALX-850-025-KI01	1Set
------------------	------

Manuals, SDS & CofA

[View Online »](#)

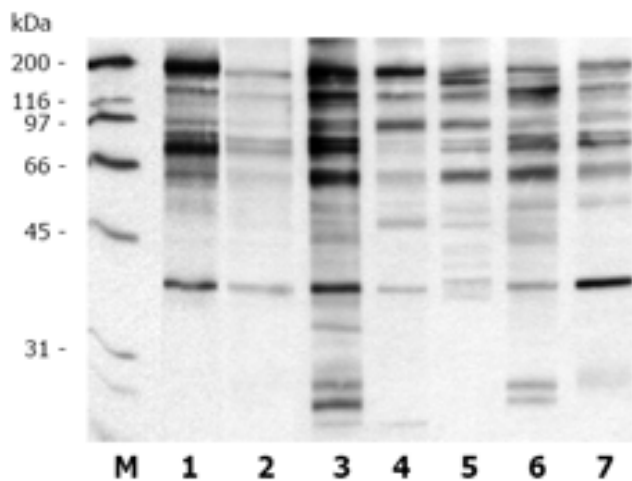


Figure: Western blot analysis of whole cell lysates of pervanadate-treated A431 cells. Immunoblots were probed with the indicated MAbs for 1h at 15-22°C and developed with ECL (exposure time: 15 sec). M: Molecular Weight Standard 1: Clone 1F9, 0.5µg/ml (Prod. No. [ALX-804-671](#)) 2: Clone 2A5, 0.2µg/ml (Prod. No. ALX-804-670) 3: Clone 2C8

Handling & Storage

Use/Stability As indicated on product label or CoA when stored as recommended.

Long Term Storage -20°C

Shipping Blue Ice

Regulatory Status RUO - Research Use Only

Product Details

Application IP, WB

Contents Contains a positive control for immunoblot applications as well as 25µg each of the following MAbs:
Clone 2C8
Clone 3B12
Clone 9H8
Clone 16F4 (Prod. No. ALX-804-174)
Clone 9F1 (Prod. No. ALX-804-669)
Clone 2A5 (Prod. No. ALX-804-670)
Clone 1F9 (Prod. No. ALX-804-671)

Recommendation Western Blot (1µg/ml for AP/BCIP/NBT (MTT) detection; 0.1µg/ml for HRPO/ECL
Dilutions/Conditions detection). Suggested dilutions/conditions may not be available for all applications. Optimal conditions must be determined individually for each application.



ENZO LIFE SCIENCES,
INC.
Phone: 800.942.0430
[info-
usa@enzolifesciences.com](mailto:info-usa@enzolifesciences.com)

European Sales Office
ENZO LIFE SCIENCES
(ELS) AG
Phone: +41 61 926 8989
[info-
eu@enzolifesciences.com](mailto:info-eu@enzolifesciences.com)

Belgium, The Netherlands
& Luxembourg
Phone: +32 3 466 0420
[info-
be@enzolifesciences.com](mailto:info-be@enzolifesciences.com)

France
Phone: +33 472 440 655
[info-
fr@enzolifesciences.com](mailto:info-fr@enzolifesciences.com)

Germany
Phone: +49 7621 5500 526
[info-
de@enzolifesciences.com](mailto:info-de@enzolifesciences.com)

UK & Ireland
Phone (UK customers):
0845 601 1488
Phone: +44 1392 825900
[info-
uk@enzolifesciences.com](mailto:info-uk@enzolifesciences.com)