

# Phospholipase D (*Streptomyces chromofuscus*)

Citations: 8

[View Online »](#)

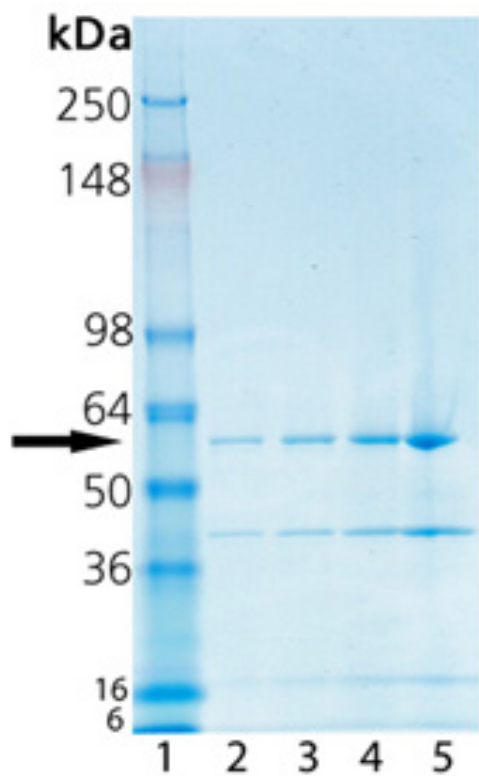
Ordering Information

[Order Online »](#)

BML-SE301-0025	25kU
----------------	------

Manuals, SDS & CofA

[View Online »](#)



SDS-PAGE Analysis: Lane 1: MWM; Lane 2: 0.5  $\mu$ g; Lane 3: 1.0  $\mu$ g; Lane 4: 2.0  $\mu$ g; Lane 5: 5.0  $\mu$ g of purified Phospholipase D. (*Streptomyces chromofuscus*) Protein Prod. No. BML-SE301.

# Handling & Storage

Use/Stability	As indicated on product label or CoA when stored as recommended.
Handling	Dilute only prior to immediate use. After opening, prepare aliquots, freeze in liquid nitrogen and store at -80°C. Avoid freeze/thaw cycles.
Long Term Storage	-80°C
Shipping	Dry Ice

## Regulatory Status

RUO - Research Use Only

# Product Details

Alternative Name	PLD, Phosphatidylcholine phosphatidohydrolase
Application Notes	<p>Useful activities of the enzyme include:</p> <p>1) Hydrolysis of phosphatidylcholine to phosphatidic acid and choline. Also active on phosphatidylserine, phosphatidylethanolamine, phosphatidylglycerol, lysophosphatidylcholine and sphingomyelins. The rate with 5mM sphingomyelin is ~ 20% of the rate with the same concentration of phosphatidylcholine.</p> <p>2) Exchange of n-alcohols for the choline group in phosphatidylcholine. Some groups report that transferase activity is low for <i>Streptomyces chromofuscus</i> Phospholipase D relative to Phospholipase D isolated from other species.</p> <p>3) Treatment of cultured cells with exogenous PLD can have growth-factor like effects, including activation of MAP kinase, stimulation of DNA synthesis and accumulation of GTP-bound Ras. These effects may be due to PLD's generation of lysophosphatidic acid (LPA) from lysophosphatidylcholine.</p>
Formulation	Liquid. In 100mM TRIS-HCl, pH 8.0, containing 10% v/v glycerol, 0.1% w/v Triton X-100.
MW	~60kDa (~40kDa heterodimer)
Purity	≥90% (SDS-PAGE)
Purity Detail	Purified by multi-step chromatography.

<b>Source</b>	Isolated from <i>Streptomyces chromofuscus</i> .
<b>Specific Activity</b>	One unit will release 1 $\mu$ mol of of choline from L- $\alpha$ -phosphatidylcholine (5mM) per hour at pH 8.0 and 37°C and sphingomyelins.
<b>UniProt ID</b>	Q8KRU5

**Last modified: May 29, 2024**



ENZO LIFE SCIENCES,  
INC.  
Phone: 800.942.0430  
[info-  
usa@enzolifesciences.com](mailto:info-usa@enzolifesciences.com)

European Sales Office  
ENZO LIFE SCIENCES  
(ELS) AG  
Phone: +41 61 926 8989  
[info-  
eu@enzolifesciences.com](mailto:info-eu@enzolifesciences.com)

Belgium, The Netherlands  
& Luxembourg  
Phone: +32 3 466 0420  
[info-  
be@enzolifesciences.com](mailto:info-be@enzolifesciences.com)

France  
Phone: +33 472 440 655  
[info-  
fr@enzolifesciences.com](mailto:info-fr@enzolifesciences.com)

Germany  
Phone: +49 7621 5500 526  
[info-  
de@enzolifesciences.com](mailto:info-de@enzolifesciences.com)

UK & Ireland  
Phone (UK customers):  
0845 601 1488  
Phone: +44 1392 825900  
[info-  
uk@enzolifesciences.com](mailto:info-uk@enzolifesciences.com)