

# Phospho-Tau (Ser202, Thr205) recombinant monoclonal antibody (0016)

The anti-Phospho-Tau (Ser202, Thr205) antibody detects phosphorylated Tau protein at serine 202 and threonine 205.

Tau is a microtubule-associated protein that plays a critical role in stabilizing microtubules and supporting axonal transport in neurons. Aberrant phosphorylation of Tau at specific sites, including Ser202 and Thr205, disrupts its normal function and promotes the formation of neurofibrillary tangles (NFTs), a hallmark of Alzheimer's disease and other tauopathies. Phosphorylated Tau at these residues is associated with neuronal dysfunction and disease progression. Hyperphosphorylation of Tau is a key pathological feature in several neurodegenerative diseases, including Alzheimer's disease, frontotemporal dementia, and progressive supranuclear palsy. Detection of Phospho-Tau (Ser202, Thr205) is widely used in research to study disease mechanisms, monitor Tau aggregation, and evaluate potential therapeutic interventions targeting Tau phosphorylation.

This antibody is covered by our [Worry-Free Guarantee](#).

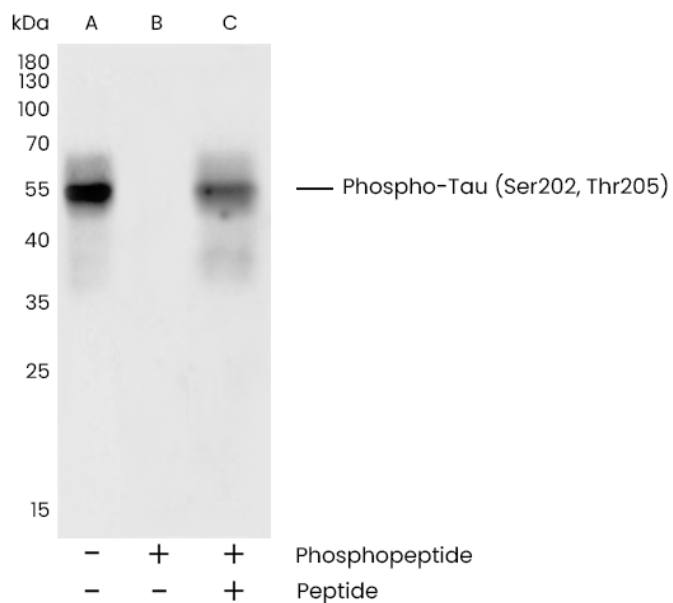
## Ordering Information

[Order Online »](#)

ENZ-ABS1049-0100	100µl
------------------	-------

## Manuals, SDS & CofA

[View Online »](#)



Western blot analysis of extracts from mouse brain (line A); treated with antigen-specific phosphopeptide (line B) or antigen-specific peptide (line C) using Phospho-Tau (Ser202, Thr205) rabbit monoclonal Antibody (ENZ-ABS1049) at 1:2000 dilution.

## Handling & Storage

**Handling** Avoid freeze-thaw cycles.

**Long Term Storage** -20°C

**Shipping** Blue Ice

**Regulatory Status** RUO - Research Use Only

## Product Details

**Application** WB

**Clone** 0016

**Formulation** Liquid. In 10 mM sodium HEPES, 150 mM NaCl, 100 µg/mL BSA, 50% glycerol, pH 7.5. Preservative-free.

**Host** Rabbit

**Immunogen** Synthetic phosphopeptide corresponding to residues around (Ser202, Thr205) of the Human Phospho-Tau.

**Isotype** IgG

**Purity Detail** Protein A purified.

**Recommendation** Western Blot (1:2'000-1:10'000)

**Dilutions/Conditions** Suggested dilutions/conditions may not be available for all applications. Optimal conditions must be determined individually for each application.

**Species Reactivity** Human, Mouse, Rat

**Worry-free Guarantee** This antibody is covered by our [Worry-Free Guarantee](#).



ENZO LIFE SCIENCES,  
INC.  
Phone: 800.942.0430  
[info-  
usa@enzolifesciences.com](mailto:info-usa@enzolifesciences.com)

European Sales Office  
ENZO LIFE SCIENCES  
(ELS) AG  
Phone: +41 61 926 8989  
[info-  
eu@enzolifesciences.com](mailto:info-eu@enzolifesciences.com)

Belgium, The Netherlands  
& Luxembourg  
Phone: +32 3 466 0420  
[info-  
be@enzolifesciences.com](mailto:info-be@enzolifesciences.com)

France  
Phone: +33 472 440 655  
[info-  
fr@enzolifesciences.com](mailto:info-fr@enzolifesciences.com)

Germany  
Phone: +49 7621 5500 526  
[info-  
de@enzolifesciences.com](mailto:info-de@enzolifesciences.com)

UK & Ireland  
Phone (UK customers):  
0845 601 1488  
Phone: +44 1392 825900  
[info-  
uk@enzolifesciences.com](mailto:info-uk@enzolifesciences.com)