

Peptide tyrosine

tyrosine polyclonal

antibody

Peptide tyrosine tyrosine (PYY) is a 36 amino acid peptide, originally isolated from porcine gut, which exhibits striking sequence homology with members of the pancreatic polypeptide family, including neuropeptide tyrosine (NPY). The peptide is localised to enteroglucagon-containing (L/EG) and pancreatic (A) cells in many mammalian and nonmammalian species. PYY gene expression is upregulated by various growth factors, including growth hormone and insulin-like growth factor-1 and the physiological effects of PYY are mediated by G-protein (Gai2) coupled Y-type receptors ('Y2 receptors of a PYY-preferring subtype'). Various actions have been reported for PYY, including the inhibition of upper intestinal and exocrine pancreatic secretion, small intestinal water flux and as the mediator for the fat-induced ileal brake. The infusion of normal post-prandial concentrations of PYY[3-36] into human volunteers has been shown to significantly decrease appetite and reduce food intake, possibly via Y2R in the arcuate nucleus. This work stimulated a great deal of research activity showing that the truncated form of PYY reduced food intake in normal and obese humans and in rodents. Recently, the actions of PYY[3-36] and GLP-1[7-36] have been shown to inhibit food intake additively in humans and rats. Immunohistochemical studies on mice have shown that PYY is the earliest detectable peptide in both pancreatic islets and colonic endocrine cells, which suggest that PYY may be a useful marker for endocrine progenitor cells.

This antibody is covered by our [Worry-Free Guarantee](#).

Ordering Information

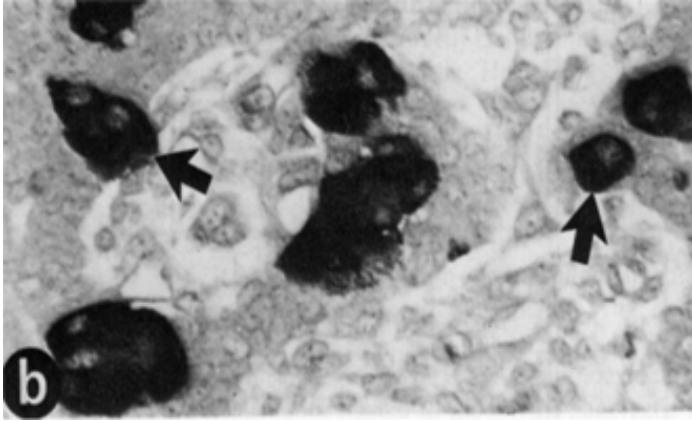
[Order Online »](#)

BML-PA1254-0100

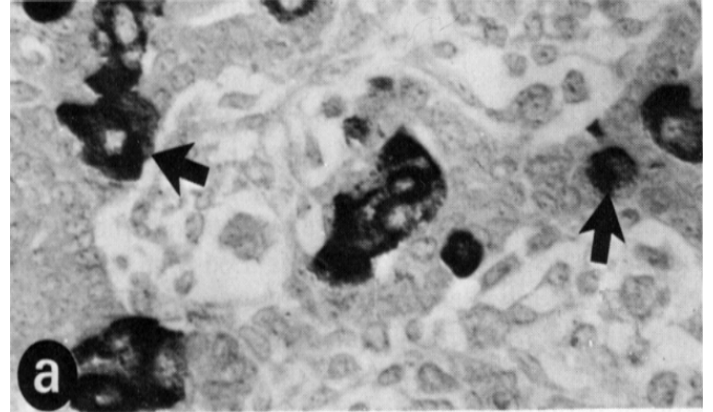
100µl

Manuals, SDS & CofA

[View Online »](#)



Immunohistochemistry analysis: De-waxed sections of Bouin-fixed fetal (14 day) rat pancreas stained with rabbit polyclonal antisera to glucagon (Prod. No. BML-GA1181; panel b). Arrows indicate identical cell profiles. From Ali-Rachedi et al., 1984.



Immunohistochemistry analysis: De-waxed section of Bouin-fixed fetal (14 day) rat pancreas stained with rabbit polyclonal antisera to PYY (Prod. No. BML-PA1254; panel a). Arrows indicate identical cell profiles. From Ali-Rachedi et al., 1984.

Handling & Storage

Handling	Avoid freeze/thaw cycles.
Long Term Storage	-20°C
Shipping	Blue Ice

Regulatory Status

RUO - Research Use Only

Product Details

Alternative Name	Peptide YY, PYY
Application	IHC, WB
Formulation	Liquid. Antiserum containing 10mM sodium azide.
Host	Rabbit
Immunogen	Natural pig PYY (peptide with tyrosine; HYPAPKEAPGEDASPEELSRYYASLRHYLNLVTRQRY-NH ₂).
Recommendation Dilutions/Conditions	Western Blot (1:1,000, ECL)Suggested dilutions/conditions may not be available for all applications.Optimal conditions must be determined individually for each application.
Source	Whole rabbit serum.
Species Reactivity	Species independent
Specificity	Recognizes PYY in a wide range of species.
UniProt ID	P68005
Worry-free Guarantee	This antibody is covered by our Worry-Free Guarantee .



ENZO LIFE SCIENCES,
INC.
Phone: 800.942.0430
[info-
usa@enzolifesciences.com](mailto:info-usa@enzolifesciences.com)

European Sales Office
ENZO LIFE SCIENCES
(ELS) AG
Phone: +41 61 926 8989
[info-
eu@enzolifesciences.com](mailto:info-eu@enzolifesciences.com)

Belgium, The Netherlands
& Luxembourg
Phone: +32 3 466 0420
[info-
be@enzolifesciences.com](mailto:info-be@enzolifesciences.com)

France
Phone: +33 472 440 655
[info-
fr@enzolifesciences.com](mailto:info-fr@enzolifesciences.com)

Germany
Phone: +49 7621 5500 526
[info-
de@enzolifesciences.com](mailto:info-de@enzolifesciences.com)

UK & Ireland
Phone (UK customers):
0845 601 1488
Phone: +44 1392 825900
[info-
uk@enzolifesciences.com](mailto:info-uk@enzolifesciences.com)