

PDI monoclonal antibody (1D3) (PE conjugate)

The mammalian protein disulphide-isomerase (PDI) family encompasses several highly divergent proteins involved in the processing and maturation of secretory proteins in the ER by catalyzing the rearrangement of disulphide bonds. PDI, an abundant protein of the ER (>400uM), contains a carboxy-terminal retention signal sequence, KDEL, similar to that of BiP and Grp94. The PDI proteins are characterized by the presence of one or more domains of ~95-110 amino acids related to the cytoplasmic protein thioredoxin. All but the PDI-D subfamily are composed entirely of repeats of such domains, with at least one domain containing - and one domain lacking - a redox-active-Cys-X-X-Cys-tetrapeptide. In addition to roles as redox catalysts and isomerases, PDI proteins perform such functions as peptide binding and cell adhesion, and may conduct chaperone activities. Platelet surface thiols and disulphides play an important role in platelet responses. Catalytically active PDI resides on platelet surfaces where it mediates platelet aggregation and secretion by reducing disulfide bonds, thus exposing fibrinogen receptors in platelets.

This antibody is covered by our [Worry-Free Guarantee](#).

Citations: 1

[View Online »](#)

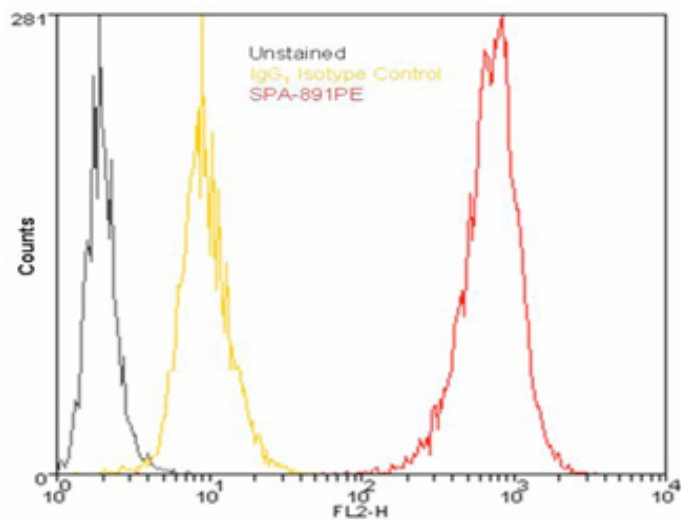
Ordering Information

[Order Online »](#)

ADI-SPA-891PE-D	50µg
ADI-SPA-891PE-F	200µg

Manuals, SDS & CofA

[View Online »](#)



Flow cytometry analysis of 10^6 Jurkat cells stained using PDI mAb (1D3), R-Phycoerythrin Conjugate at a concentration of $10\mu\text{g/ml}$.

Handling & Storage

Handling	Avoid freeze/thaw cycles. Protect from light.
Long Term Storage	+4°C
Shipping	Blue Ice

Regulatory Status

RUO - Research Use Only

Product Details

Alternative Name	P4HB, protein disulfide isomerase
Application	Flow Cytometry
Application Notes	Detects a band of ~58kDa by Western blot.
Clone	1D3
Formulation	Liquid. In PBS, pH 7.2, containing 0.09% sodium azide.
Host	Mouse
Immunogen	Synthetic peptide corresponding to the sequence near the C-terminus of rat PDI.
Isotype	IgG1
Purity Detail	Protein G affinity purified.
Recommendation Dilutions/Conditions	Flow Cytometry (1:100)Suggested dilutions/conditions may not be available for all applications.Optimal conditions must be determined individually for each application.
Source	Purified from ascites
Species Reactivity	Bovine, Chicken, Dog, Guinea pig, Hamster, Human, Monkey, Mouse, Porcine, Rabbit, Rat, Sheep, Xenopus
UniProt ID	P04785



ENZO LIFE SCIENCES,
Phone: 800.942.0430
info-usa@enzolifesciences.com

European Sales Office
(ELS) AG
Phone: +41 61 926 8989
info-eu@enzolifesciences.com

Belgium, The Netherlands
Phone: +32 3 466 0420
info-be@enzolifesciences.com

France
Phone: +33 1 42 44 55 55
info-fr@enzolifesciences.com

Germany
Phone: +49 7621 5500 526
info-de@enzolifesciences.com

UK & Ireland
Phone (UK customers):
0845 601 1488
Phone: +44 1392 825900
info-uk@enzolifesciences.com

This antibody is covered by our **Worry Free Guarantee**