

PDI monoclonal antibody (1D3)

The mammalian protein disulphide-isomerase (PDI) family encompasses several highly divergent proteins involved in the processing and maturation of secretory proteins in the ER by catalyzing the rearrangement of disulphide bonds. PDI, an abundant protein of the ER (>400uM), contains a carboxy-terminal retention signal sequence, KDEL, similar to that of BiP and Grp94. The PDI proteins are characterized by the presence of one or more domains of ~95-110 amino acids related to the cytoplasmic protein thioredoxin. All but the PDI-D subfamily are composed entirely of repeats of such domains, with at least one domain containing - and one domain lacking - a redox-active-Cys-X-X-Cys-tetrapeptide. In addition to roles as redox catalysts and isomerases, PDI proteins perform such functions as peptide binding and cell adhesion, and may conduct chaperone activities. Platelet surface thiols and disulphides play an important role in platelet responses. Catalytically active PDI resides on platelet surfaces where it mediates platelet aggregation and secretion by reducing disulfide bonds, thus exposing fibrinogen receptors in platelets.

This antibody is covered by our [Worry-Free Guarantee](#).

Citations: 3

[View Online »](#)

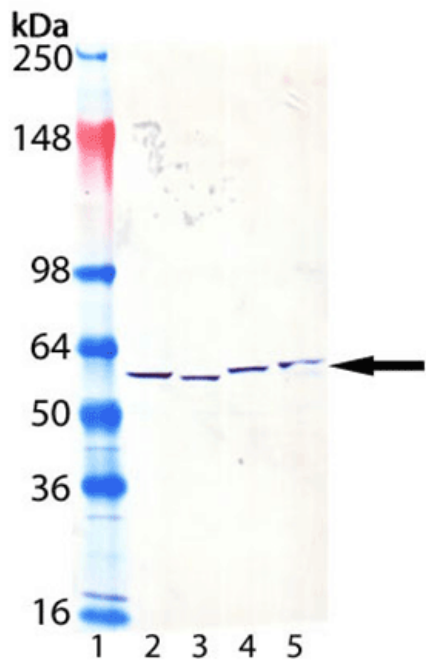
Ordering Information

[Order Online »](#)

ENZ-ABS686-0050	50µg
-----------------	------

Manuals, SDS & CofA

[View Online »](#)



Western Blot analysis of ENZ-ABS686: Lane 1: MW marker, Lane 2: 3T3 (heat shocked), (cell lysate) (Prod. No. ADI-LYC-3T101), Lane 3: PC-12 (heat shocked), (cell lysate) (Prod. No. ADI-LYC-PC101), Lane 4: HeLa (heat shocked), (cell lysate) (Prod. No. ADI-LYC-HL101), Lane 5: Vero (heat shocked) cell lysate.

Handling & Storage

Handling Avoid freeze/thaw cycles.

Long Term Storage -20°C

Shipping Blue Ice

Regulatory Status RUO - Research Use Only

Product Details

Alternative Name P4HB, Protein disulfide isomerase

Application Electron microscopy, ICC, IF, IHC, WB

Application Notes Detects a band of ~58kDa by Western blot.

Clone 1D3

Formulation Liquid. In PBS, pH 7.2, containing 50% glycerol and 0.09% sodium azide.

Host Mouse

Immunogen Synthetic peptide corresponding to the sequence near the C-terminus of rat PDI.

Isotype IgG1

Purity Detail Protein G affinity purified.

Recommendation Dilutions/Conditions Immunohistochemistry (1:200-1:500)Western Blot (1:1,000, colorimetric)Suggested dilutions/conditions may not be available for all applications.Optimal conditions must be determined individually for each application.

Source Purified from hybridoma tissue culture supernatant.

Species Reactivity Bovine, Chicken, Dog, Guinea pig, Hamster, Human, Monkey, Mouse, Porcine, Rabbit, Rat, Sheep, Xenopus

UniProt ID P04785

Last modified: May 29, 2024



ENZO LIFE SCIENCES,
INC.
Phone: 800.942.0430
[info-
usa@enzolifesciences.com](mailto:info-usa@enzolifesciences.com)

European Sales Office
ENZO LIFE SCIENCES
(ELS) AG
Phone: +41 61 926 8989
[info-
eu@enzolifesciences.com](mailto:info-eu@enzolifesciences.com)

Belgium, The Netherlands
& Luxembourg
Phone: +32 3 466 0420
[info-
be@enzolifesciences.com](mailto:info-be@enzolifesciences.com)

France
Phone: +33 472 440 655
[info-
fr@enzolifesciences.com](mailto:info-fr@enzolifesciences.com)

Germany
Phone: +49 7621 5500 526
[info-
de@enzolifesciences.com](mailto:info-de@enzolifesciences.com)

UK & Ireland
Phone (UK customers):
0845 601 1488
Phone: +44 1392 825900
[info-
uk@enzolifesciences.com](mailto:info-uk@enzolifesciences.com)