

# PDE5A polyclonal antibody

This antibody is covered by our [Worry-Free Guarantee](#).

Citations: 1

[View Online »](#)

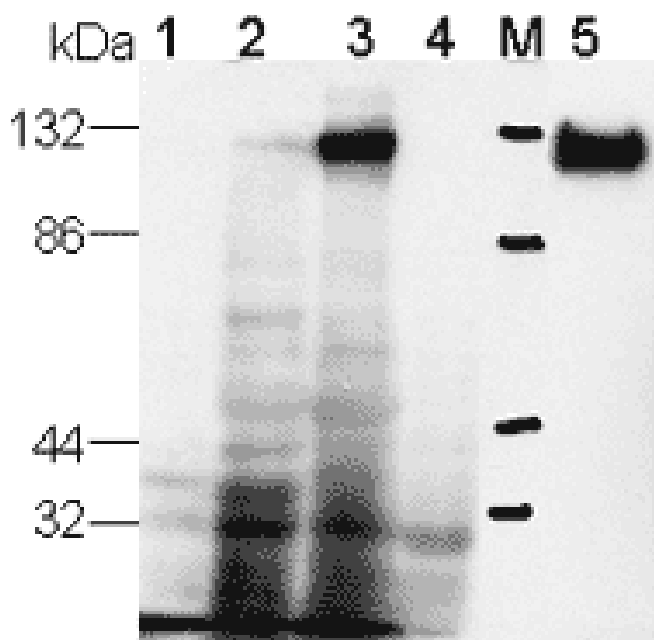
## Ordering Information

[Order Online »](#)

|                  |      |
|------------------|------|
| ALX-210-099-C050 | 50µg |
|------------------|------|

Manuals, SDS & CofA

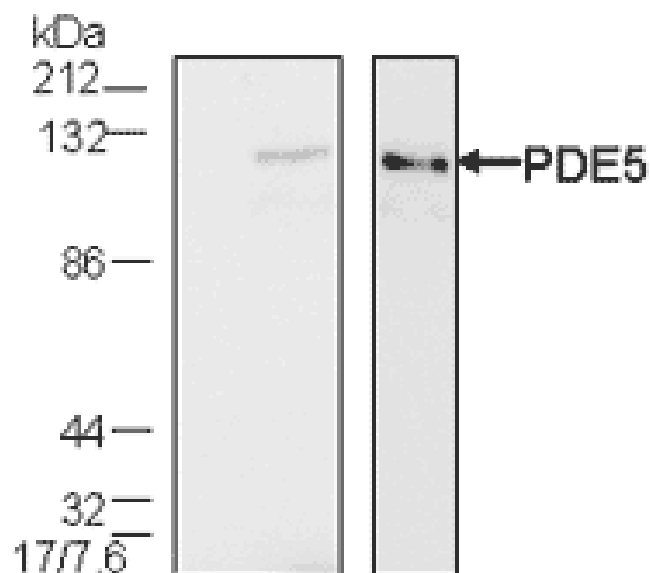
[View Online »](#)



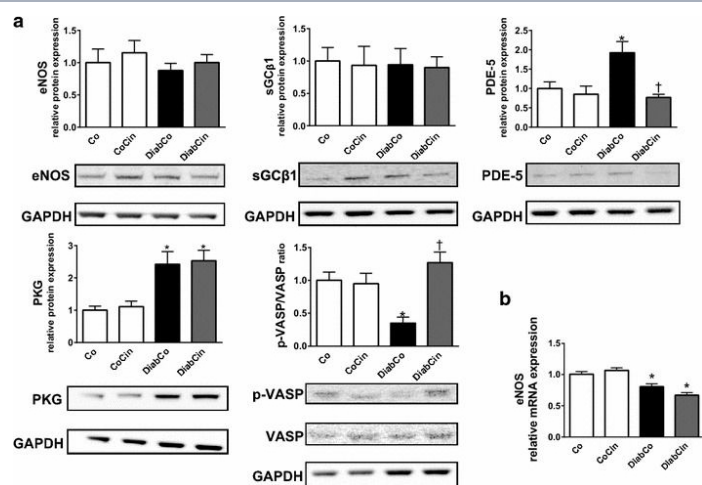
**Figure 2:** Western blot using PAb to PDE5A (Prod. No. [ALX-210-099](#)) at 1:1'000 dilution. Lane 1) 200µg of 15'000 x g supernatant of lysate from mouse brain. Lane 2) Mouse heart. Lane 3) Mouse lung. Lane 4) Mouse liver. Lane 5) 5ng of purified bovine PDE5. """,PDE5A polyclonal antibody Western blot,PDE5A polyclonal antibody Western blot,yes ALX-210-099,210-

099\_1.gif,[http://static.enzolifesciences.com/fileadmin/files/image/210-](http://static.enzolifesciences.com/fileadmin/files/image/210-099_1.gif)

099\_1.gif,**Figure 1:** Western blot using PAb to PDE5A (Prod. No. [ALX-210-099](#)) at 1:1'000 dilution. Lane 1) 100µg of PDE5A-deficient SKN-BE2 neuroblastoma lysate. Lane 2) 100µg lysate mixed with 5ng of purified recombinant bovine PDE5A (Prod. No. ALX-201-257). Lane 3) 3ng of partially purified recombinant bovine PDE5A. Signal was developed for 5 sec. using ECL-Plus reagent (Amersham). """"""



**Figure 1:** Western blot using PAb to PDE5A (Prod. No. ALX-210-099) at 1:1'000 dilution. Lane 1) 100µg of PDE5A-deficient SKN-BE2 neuroblastoma lysate. Lane 2) 100µg lysate mixed with 5ng of purified recombinant bovine PDE5A (Prod. No. ALX-201-257). Lane 3) 3ng of partially purified recombinant bovine PDE5A. Signal was developed for 5 sec. using ECL-Plus reagent (Amersham).



The effect of diabetes mellitus and cinaciguat on myocardial NO-sGC-cGMP-PKG signalling. a Relative protein expression and representative immunoblot bands of endothelial nitric oxide synthase (eNOS), soluble guanylate cyclase β1 (sGC β1), phosphodiesterase 5A (PDE-5) (P value of diabetes × treatment interaction in the two-factorial ANOVA, Pinteraction = 0.024), protein kinase G (PKG), vasodilator-stimulated phosphoprotein (VASP) to phospho-VASP (p-VASP) ratio (Pinteraction = 0.003). b Relative gene expression of eNOS (Pinteraction = 0.039). Groups: vehicle-treated control (Co), cinaciguat-treated control (CoCin), vehicle-treated diabetic (DiabCo) and cinaciguat-treated diabetic (DiabCin). Bar graphs represent mean ± SEM of 5–6 experiments per group. \*P < 0.05 vs. Co, †P < 0.05 vs. DiabCo (Tukey HSD test)

Image collected and cropped by CiteAb under a CC-BY license from the following publication: The soluble guanylate cyclase activator cinaciguat prevents cardiac dysfunction in a rat model of type-1 diabetes mellitus. *Cardiovasc Diabetol* (2015)

## Handling & Storage

|                    |                                                                               |
|--------------------|-------------------------------------------------------------------------------|
| Handling           | Avoid freeze/thaw cycles. After opening, prepare aliquots and store at -20°C. |
| Short Term Storage | +4°C                                                                          |
| Long Term Storage  | -20°C                                                                         |
| Shipping           | Blue Ice                                                                      |

**Regulatory Status** RUO - Research Use Only

## Product Details

|                                        |                                                                                                                                                                          |
|----------------------------------------|--------------------------------------------------------------------------------------------------------------------------------------------------------------------------|
| Alternative Name                       | Phosphodiesterase 5A, cGMP-specific 3',5'-cyclic phosphodiesterase, CGB-PDE                                                                                              |
| Application                            | WB                                                                                                                                                                       |
| Formulation                            | Liquid. In PBS containing 30% glycerol and 0.02% sodium azide.                                                                                                           |
| Host                                   | Rabbit                                                                                                                                                                   |
| Immunogen                              | Synthetic peptide corresponding to aa 857-875 (CA857EQQEKMLINGESGQAKRN875) of human PDE5A (phosphodiesterase 5A).                                                        |
| Purity Detail                          | Epitope-affinity purified.                                                                                                                                               |
| Recommendation<br>Dilutions/Conditions | Western Blot (1:10,000)Suggested dilutions/conditions may not be available for all applications.Optimal conditions must be determined individually for each application. |
| Species Reactivity                     | Bovine, Mouse                                                                                                                                                            |
| UniProt ID                             | O76074                                                                                                                                                                   |
| Worry-free Guarantee                   | This antibody is covered by our <a href="#">Worry-Free Guarantee</a> .                                                                                                   |



ENZO LIFE SCIENCES,  
INC.  
Phone: 800.942.0430  
[info-  
usa@enzolifesciences.com](mailto:info-usa@enzolifesciences.com)

European Sales Office  
ENZO LIFE SCIENCES  
(ELS) AG  
Phone: +41 61 926 8989  
[info-  
eu@enzolifesciences.com](mailto:info-eu@enzolifesciences.com)

Belgium, The Netherlands  
& Luxembourg  
Phone: +32 3 466 0420  
[info-  
fr@enzolifesciences.com](mailto:info-fr@enzolifesciences.com)

France  
Phone: +33 472 440 655  
[info-  
fr@enzolifesciences.com](mailto:info-fr@enzolifesciences.com)

Germany  
Phone: +49 7621 5500 526  
[info-  
de@enzolifesciences.com](mailto:info-de@enzolifesciences.com)

UK & Ireland  
Phone (UK customers):  
0845 601 1488  
Phone: +44 1392 825900  
[info-  
uk@enzolifesciences.com](mailto:info-uk@enzolifesciences.com)