

PD-L1 (human), (recombinant)

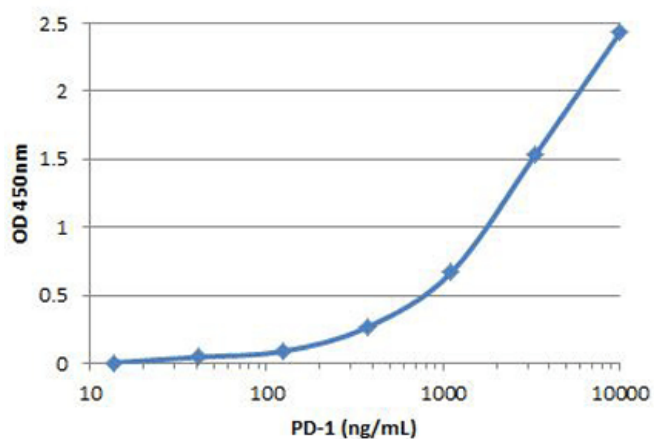
PD-L1, also known as B7-H1 and CD274, is a 290 amino acid transmembrane glycoprotein in the B7 family of immune regulatory molecules. It has an extracellular domain that can interact with PD-1, which belongs to the CD28/CTLA4 family expressed on activated lymphoid cells. The PD1/PD-L1 interaction ensures that activation of the immune system occurs at the appropriate time. This will minimize the possibility of chronic autoimmune inflammation. PD-L1 is known to inhibit proliferation of T cells via apoptosis. It also plays an important role in arresting cell-cycle progression. This makes PD-L1 an attractive therapeutic target for cancer and immunologic diseases.

Citations: 1

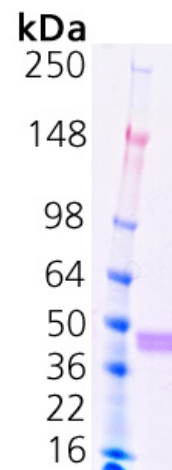
[View Online »](#)

Manuals, SDS & CofA

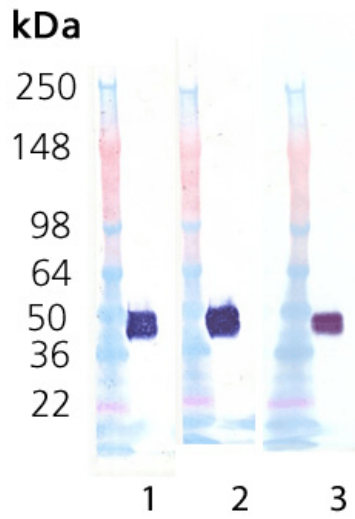
[View Online »](#)



PD-L1 (Prod. No. ENZ-PRT223) was coated onto high binding plates at 10ug/mL. PD-1:human Fc was titrated into the assay. The reactions were incubated for 1 hour at room temperature. The plates were washed 3X. Goat anti human IgG-HRP was added into the wells and the plate was incubated for 1 hour then washed 3X. TMB substrate was added. The reaction was stopped with 1M HCL and the plate was read at OD450nm. PD-1 binding to PD-L1 is in the range of 10 – 10,000 ng/ml.



Coomassie stained SDS-PAGE. Lane 1, Molecular weight marker. Lane 2, 1.0 µg PD-L1. Lane 3, 1.0 µg PD-L1.



Western Blot Analysis. Lane 1,3 and 6, Molecular weight marker. 100ng PD-L1 (Prod. No. ENZ-PRT223) Probed with (Lane 2) mouse anti-FLAG monoclonal antibody, (Lane 4) mouse anti-HIS monoclonal antibody, and (Lane 6) mouse anti-PD-L1 monoclonal antibody.

Handling & Storage

Handling	Spin tube prior to reconstitution. Avoid freeze/thaw cycles. After reconstitution, prepare aliquots and store at -80°C.
Long Term Storage	-20°C
Shipping	Blue Ice

Regulatory Status RUO - Research Use Only

Product Details

Alternative Name	Programmed cell death 1 ligand 1, CD274, B7-H1, Programmed death ligand 1
Concentration	0.5 mg/mL after reconstitution.
Formulation	Lyophilized. Contains PBS.
MW	~27kDa (actual is a doublet at 45kDa and 50kDa)
Purity	≥90% (SDS-PAGE)
Reconstitution	Reconstitute in 200µl PBS.
Source	Produced in HEK cells. Human PD-L1 (aa 19-239) is fused at the N-terminus to a His-tag and FLAG [®] -tag.
UniProt ID	Q9NZQ7

Last modified: May 29, 2024



ENZO LIFE SCIENCES,
INC.
Phone: 800.942.0430
info-usa@enzolifesciences.com

European Sales Office
ENZO LIFE SCIENCES
(ELS) AG
Phone: +41 61 926 8989
info-eu@enzolifesciences.com

Belgium, The Netherlands
& Luxembourg
Phone: +32 3 466 0420
info-be@enzolifesciences.com

France
Phone: +33 472 440 655
info-fr@enzolifesciences.com

Germany
Phone: +49 7621 5500 526
info-de@enzolifesciences.com

UK & Ireland
Phone (UK customers):
0845 601 1488
Phone: +44 1392 825900
info-uk@enzolifesciences.com