

PCNA recombinant monoclonal antibody (144)

The anti-PCNA antibody detects human Proliferating Cell Nuclear Antigen (PCNA), a key protein involved in DNA replication and repair. This antibody is optimized for applications such as immunohistochemistry (IHC), ELISA, and Western blotting.

Proliferating Cell Nuclear Antigen (PCNA) is a nuclear protein that acts as a processivity factor for DNA polymerase δ during DNA replication. It forms a homotrimeric ring that encircles the DNA, serving as a sliding clamp to enhance the efficiency of DNA synthesis. In addition to its critical role in replication, PCNA is also involved in DNA repair, chromatin remodeling, and cell cycle regulation. PCNA expression is tightly correlated with cellular proliferation and is widely used as a marker for dividing cells in cancer research, developmental biology, and tissue regeneration studies. Its dysregulation has been implicated in tumorigenesis and other diseases associated with genomic instability.

This antibody is covered by our [Worry-Free Guarantee](#).

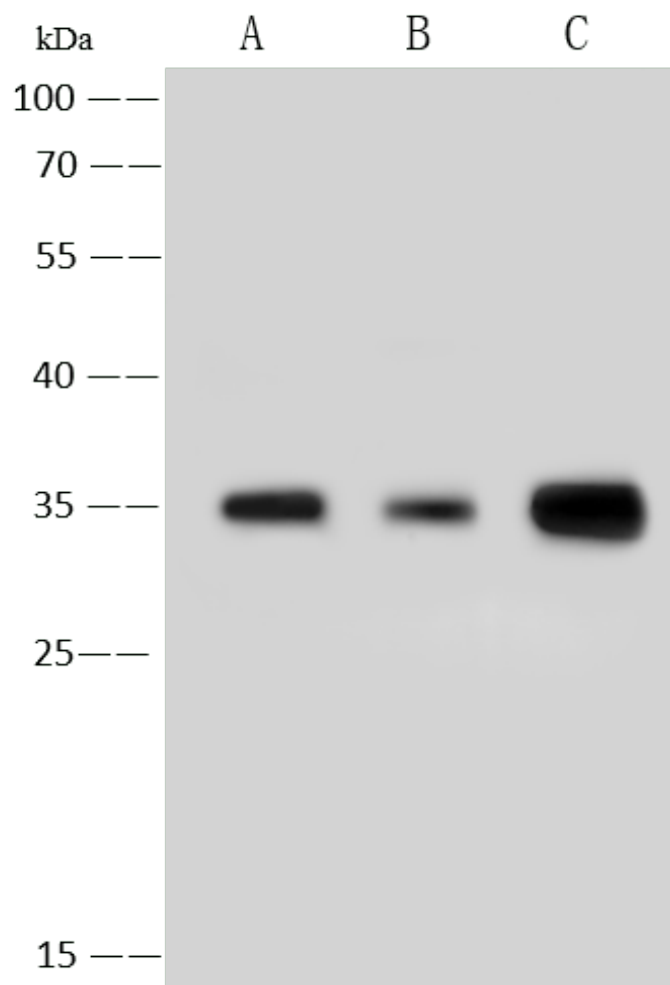
Ordering Information

[Order Online »](#)

ENZ-ABS1050-0100	100 μ l
------------------	-------------

Manuals, SDS & CofA

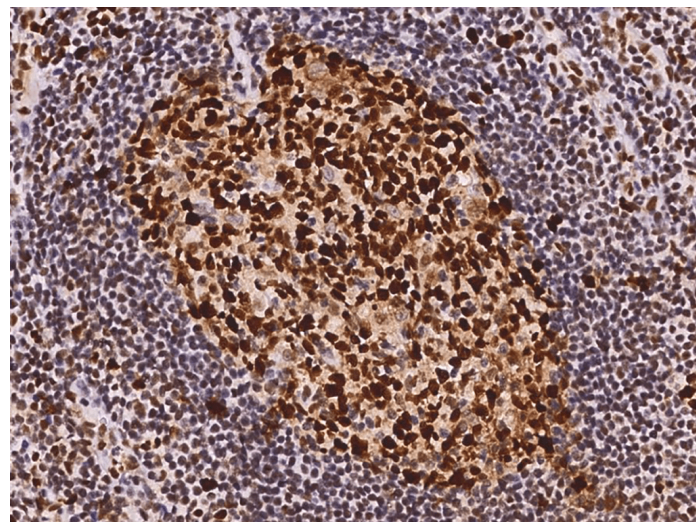
[View Online »](#)



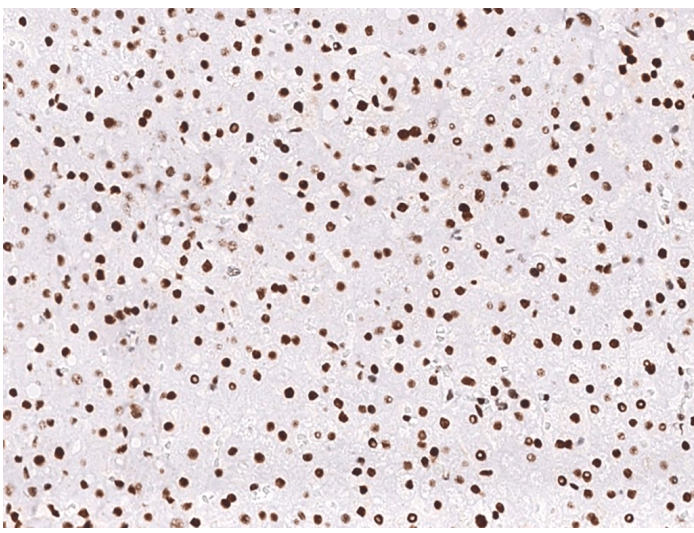
WB: Anti-PCNA rabbit polyclonal antibody at 1:500 dilution

Lane A: HeLa Whole Cell Lysate. Lane B: MCF-7 Whole Cell Lysate. Lane C: MOLT-4 Whole Cell Lysate
Lysates/proteins at 30 µg per lane. Secondary ab: Goat Anti-Rabbit IgG (H+L)/HRP at 1/10000 dilution.

Observed band size: 35 kDa



Immunohistochemical staining of human PCNA in human lymph node with rabbit monoclonal antibody at 1:200 dilution, formalin-fixed paraffin embedded sections.



Immunohistochemical staining of human PCNA in human liver with rabbit monoclonal antibody at 1:200 dilution, formalin-fixed paraffin embedded sections.

Handling & Storage

Handling	Avoid freeze-thaw cycles.
Long Term Storage	-20°C
Shipping	Blue Ice

Regulatory Status

RUO - Research Use Only

Product Details

Alternative Name	Proliferating cell nuclear antigen
Application	ELISA, IHC (PS), WB
Clone	144
Formulation	Liquid. 0.2 µm filtered solution in PBS. Carrier-free. Preservative-free.
Host	Rabbit
Immunogen	Recombinant human PCNA protein.
Isotype	IgG
Purity Detail	Protein A purified.
Recommendation Dilutions/Conditions	ELISA (1:5'000-1:10'000) Western Blot (1:500-1:2'000) Immunohistochemistry (paraffin sections) (1:100-1:500) Suggested dilutions/conditions may not be available for all applications. Optimal conditions must be determined individually for each application.
Species Reactivity	Human
Worry-free Guarantee	This antibody is covered by our Worry-Free Guarantee .

Last modified: January 9, 2025



ENZO LIFE SCIENCES,
INC.
Phone: 800.942.0430
[info-
usa@enzolifesciences.com](mailto:info-usa@enzolifesciences.com)

European Sales Office
ENZO LIFE SCIENCES
(ELS) AG
Phone: +41 61 926 8989
[info-
eu@enzolifesciences.com](mailto:info-eu@enzolifesciences.com)

Belgium, The Netherlands
& Luxembourg
Phone: +32 3 466 0420
[info-
be@enzolifesciences.com](mailto:info-be@enzolifesciences.com)

France
Phone: +33 472 440 655
[info-
fr@enzolifesciences.com](mailto:info-fr@enzolifesciences.com)

Germany
Phone: +49 7621 5500 526
[info-
de@enzolifesciences.com](mailto:info-de@enzolifesciences.com)

UK & Ireland
Phone (UK customers):
0845 601 1488
Phone: +44 1392 825900
[info-
uk@enzolifesciences.com](mailto:info-uk@enzolifesciences.com)