

# PC2 polyclonal antibody

PC2 belongs to the subtilisin-like proprotein convertase family. The members of this family are proprotein convertases that process latent precursor proteins into their biologically active products. This protein is a proinsulin-processing enzyme that plays a key role in regulating insulin biosynthesis. The protein is also known to cleave proopiomelanocortin, proenkephalin, prodynorphin and proluteinizing-hormone-releasing hormone.

This antibody is covered by our [Worry-Free Guarantee](#).

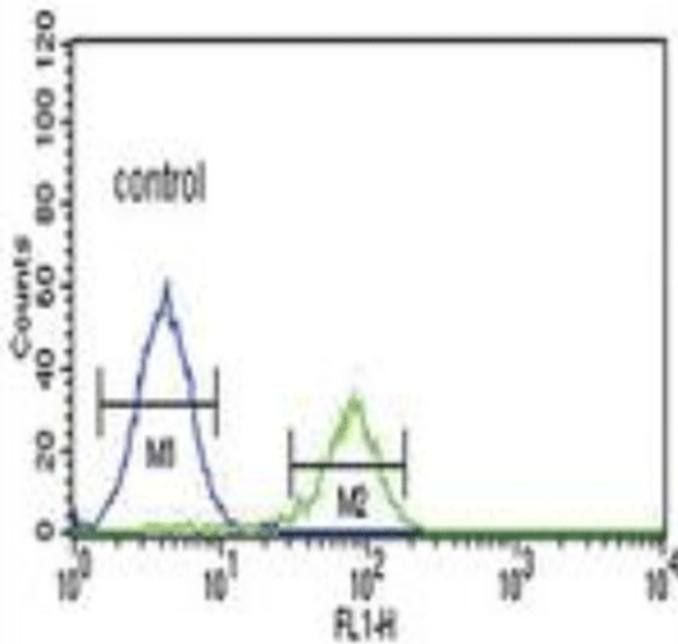
## Ordering Information

[Order Online »](#)

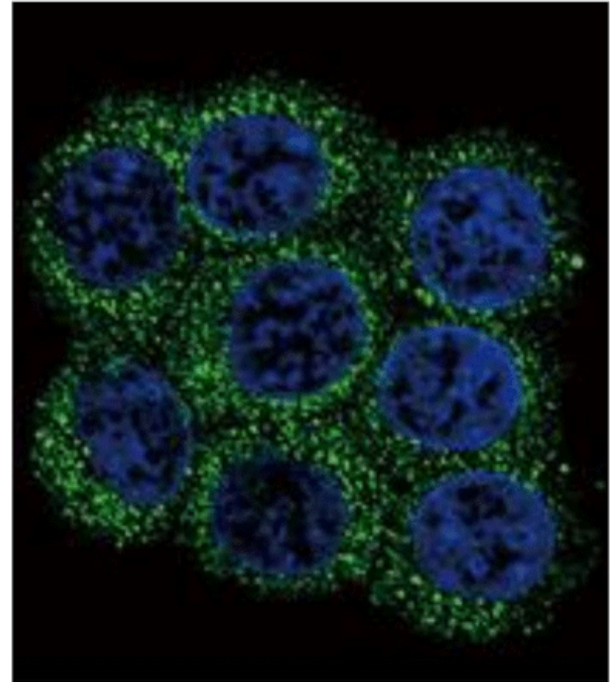
ENZ-ABS269-0100	100µl
-----------------	-------

## Manuals, SDS & CofA

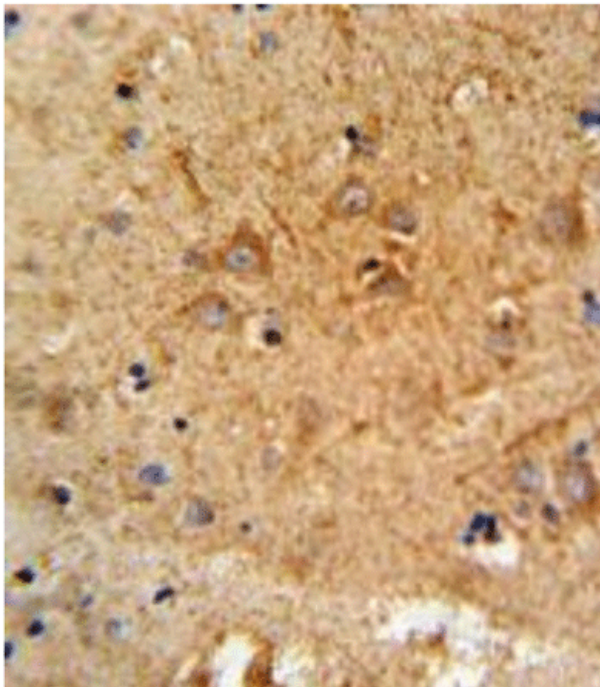
[View Online »](#)



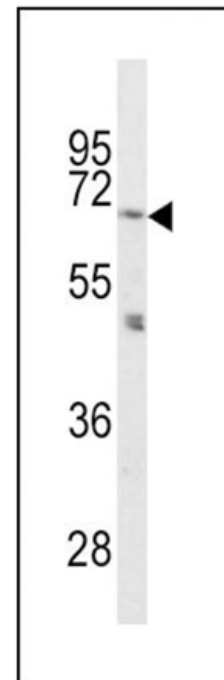
Flow cytometry analysis of K562 cells using a PC2, pAb (Prod. no ENZ-ABS269 (right) compared to a negative control cell (left) at a dilution of 1:10-50, followed by a FITC-conjugated goat anti-rabbit antibody.



Immunofluorescent analysis of 293 cells using a PC2, pAb (Prod. no. ENZ-ABS269) at a dilution of 1:10-50, followed by a fluor-conjugated goat anti-rabbit secondary antibody (green). Nuclei were stained with DAPI (blue).



Immunohistochemical analysis of formalin-fixed, paraffin-embedded human brain tissue using a PC2, pAb (Prod. no. ENZ-ABS269), followed by HRP-conjugated secondary antibody and DAB staining.



Western blot analysis using a PC2, pAb (Prod. no ENZ-ABS269) in mouse cerebellum tissue lysates (35ug per lane).

# Handling & Storage

Use/Stability	May be stored at +4°C for up to 6 months.
Handling	Avoid freeze/thaw cycles. After opening, prepare aliquots and store at -20°C.
Short Term Storage	+4°C
Long Term Storage	-20°C
Shipping	Blue Ice

## Regulatory Status

RUO - Research Use Only

# Product Details

Alternative Name	Proprotein convertase 2, PCSK2, Neuroendocrine convertase 2
Application	Flow Cytometry, ICC, IF, IHC, WB
Crossreactivity	Predicted to react with pig and rat based on sequence homology.
Formulation	Liquid. In PBS containing 0.09% sodium azide.
Host	Rabbit
Immunogen	Synthetic peptide corresponding to aa 87-116 of N-terminal human PC2 conjugated to KLH.
Recommendation Dilutions/Conditions	Flow Cytometry (1:10-1:50)Immunocytochemistry (1:10-1:50)Immunofluorescence (1:10-1:50)Immunohistochemistry (1:10-1:50)Western Blot (1:1,000)Suggested dilutions/conditions may not be available for all applications.Optimal conditions must be determined individually for each application.
Species Reactivity	Human, Mouse
UniProt ID	P16519

Worry-free Guarantee

This antibody is covered by our [Worry-Free Guarantee](#)

.



ENZO LIFE SCIENCES,  
INC.  
Phone: 800.942.0430  
[info-  
usa@enzolifesciences.com](mailto:info-usa@enzolifesciences.com)

European Sales Office  
ENZO LIFE SCIENCES  
(ELS) AG  
Phone: +41 61 926 8989  
[info-  
eu@enzolifesciences.com](mailto:info-eu@enzolifesciences.com)

Belgium, The Netherlands  
& Luxembourg  
Phone: +32 3 466 0420  
[info-  
be@enzolifesciences.com](mailto:info-be@enzolifesciences.com)

France  
Phone: +33 472 440 655  
[info-  
fr@enzolifesciences.com](mailto:info-fr@enzolifesciences.com)

Germany  
Phone: +49 7621 5500 526  
[info-  
de@enzolifesciences.com](mailto:info-de@enzolifesciences.com)

UK & Ireland  
Phone (UK customers):  
0845 601 1488  
Phone: +44 1392 825900  
[info-  
uk@enzolifesciences.com](mailto:info-uk@enzolifesciences.com)