

PARP polyclonal antibody

This antibody is covered by our [Worry-Free Guarantee](#).

Citations: 6

[View Online »](#)

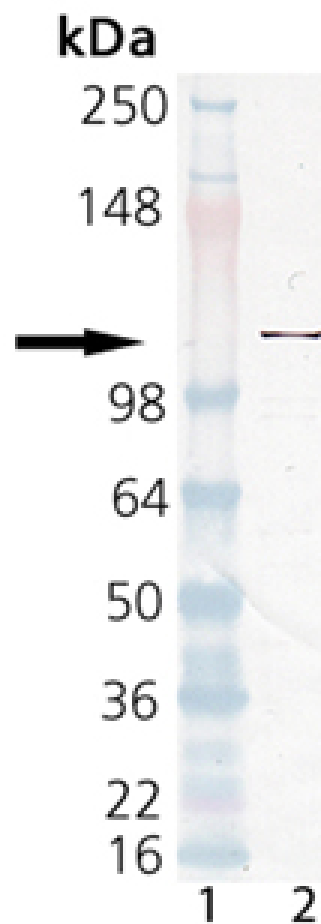
Ordering Information

[Order Online »](#)

BML-SA253-0025	25µl
BML-SA253-0100	100µl

Manuals, SDS & CofA

[View Online »](#)



Western Blot Analysis of the Poly(ADP-ribose) polymerase, pAb (BML-SA253). Lane 1: Molecular Weight Marker, Lane 2: Human HL60 Cell Extract (BML-SW101).

Handling & Storage

Handling Avoid freeze/thaw cycles. After opening, prepare aliquots and store at -20°C.

Long Term Storage -20°C

Shipping Dry Ice

Regulatory Status RUO - Research Use Only

Product Details

Alternative Name Poly(ADP-ribose) polymerase, PARP-1

Application ELISA, WB

Application Notes Detects a band of ~116kDa by Western blot.

Formulation Liquid. Neat serum containing 0.05% sodium azide.

Host Rabbit

Immunogen Synthetic peptide corresponding to aa 509-524 of bovine PARP automodification domain.

Recommendation Dilutions/Conditions Western Blot (1:1,000, colorimetric). Suggested dilutions/conditions may not be available for all applications. Optimal conditions must be determined individually for each application

Source Whole rabbit serum.

Species Reactivity Bovine, Human, Mouse, Rat

UniProt ID P18493

Worry-free Guarantee This antibody is covered by our [Worry-Free Guarantee](#)

.