

# Opioid receptor $\kappa$ polyclonal antibody

The opioid receptors delta (DOP, OP1), kappa (KOP, OP2), and mu (MOP, OP3) are members of the seven-transmembrane domain-containing receptor family of G-protein coupled receptors, sharing nearly 60% identity, but varying greatly in the extracellular N-terminus region of the receptors. The delta, kappa and mu-receptors serve as functional receptors for endogenous enkephalin, dynorphin, and beta-endorphin peptide ligands, respectively, mediating their signal via coupling to Gi/o alpha subunits to inhibit adenylyl cyclases and calcium conductance (N- and L-type channels), and to stimulate MAPK activation and potassium conductance. Delta-opioid receptors are highly expressed in the olfactory bulb, neocortex, caudate putamen and nucleus accumbens, with peripheral expression in the gastro-intestinal tract and vas deferens. Delta-opioid receptors function to inhibit neurotransmitter release resulting in a variety of biological effects including analgesia, motor integration, gastro-intestinal motility, olfaction,

This antibody is covered by our [Worry-Free Guarantee](#).

Citations: 1

[View Online »](#)

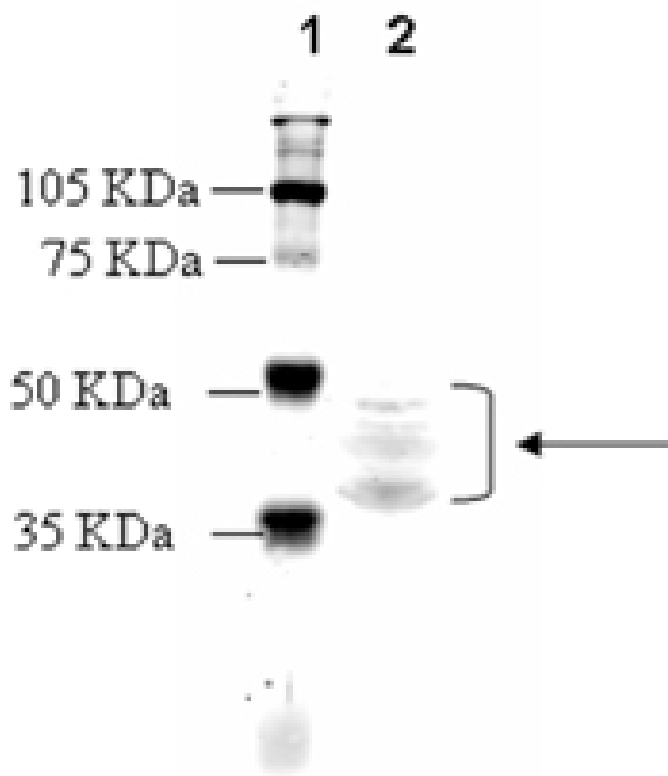
## Ordering Information

[Order Online »](#)

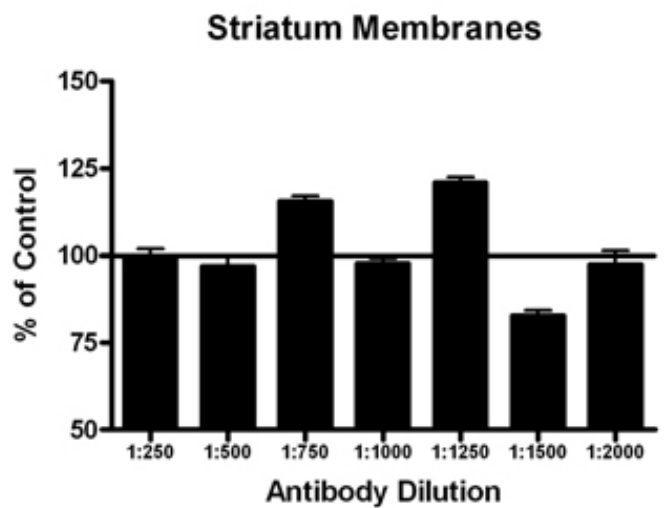
ADI-905-799-100	100µg
-----------------	-------

## Manuals, SDS & CofA

[View Online »](#)



Western blot analysis: MW marker (1) and 50µg rat brain extract (1) probed with Opioid Receptor kappa pAb at 1µg/ml



Membrane ELISA: Lewis rat striatum membranes (5µg/well) were treated with 1 µM concentrations of agonist (Endorphin B) and probed with Opioid Receptor kappa pAb (1:250 to 1:2000 of a 1µg/µl stock solution) by ELISA. Data from vehicle treated cells were taken as 100%. Results are the mean ± SEM (n=4).

## Handling & Storage

**Handling** Keep on ice at all times.

**Long Term Storage** -20°C

**Shipping** Blue Ice

**Regulatory Status** RUO - Research Use Only

## Product Details

**Alternative Name** OPRK1, KOR-1

**Application** ELISA, IHC, WB

**Application Notes** Suitable for cell-based and membrane-based ELISA.  
Predicted MW of ~43kDa. Higher MW species (~50kDa) and intermediates also observed by Western blot which reflect post-translational modification of the receptor.

**Crossreactivity** Predicted species reactivity based on epitope sequence homology: dog, bovine, horse.

**Formulation** Liquid. In PBS containing 50% glycerol and 0.01% sodium azide.

**Host** Rabbit

**Immunogen** Synthetic peptide corresponding to the sequence near the N-terminus of mouse opioid receptor  $\kappa$ .

**Purity Detail** Peptide affinity purified.

**Species Reactivity** Human, Mouse, Rat

**UniProt ID** P33534

**Worry-free Guarantee** This antibody is covered by our [Worry-Free Guarantee](#).



ENZO LIFE SCIENCES,  
INC.  
Phone: 800.942.0430  
[info-  
usa@enzolifesciences.com](mailto:info-usa@enzolifesciences.com)

European Sales Office  
ENZO LIFE SCIENCES  
(ELS) AG  
Phone: +41 61 926 8989  
[info-  
eu@enzolifesciences.com](mailto:info-eu@enzolifesciences.com)

Belgium, The Netherlands  
& Luxembourg  
Phone: +32 3 466 0420  
[info-  
be@enzolifesciences.com](mailto:info-be@enzolifesciences.com)

France  
Phone: +33 472 440 655  
[info-  
fr@enzolifesciences.com](mailto:info-fr@enzolifesciences.com)

Germany  
Phone: +49 7621 5500 526  
[info-  
de@enzolifesciences.com](mailto:info-de@enzolifesciences.com)

UK & Ireland  
Phone (UK customers):  
0845 601 1488  
Phone: +44 1392 825900  
[info-  
uk@enzolifesciences.com](mailto:info-uk@enzolifesciences.com)